

Anti LIM2 Antibody

Catalog No: tcsa12756



Available Sizes

Size: 100μl



Specifications

Application:

WB

Species Reactivity:

Human, Mouse, Rat

Host Species:

Rabbit

Immunogen / Amino acids:

Recombinant protein of human LIM2

Conjugation:

Unconjugated

Clonality:

Polyclonal

Isotype:

IgG

Form:

Liquid

Storage Buffer:

PBS with 0.02% sodium azide, 50% glycerol, pH7.3.

Recommended Dilution:

WB 1:500 - 1:2000

Storage Instruction:

Store at -20C. Avoid freeze / thaw cycles.

Alternative Names:

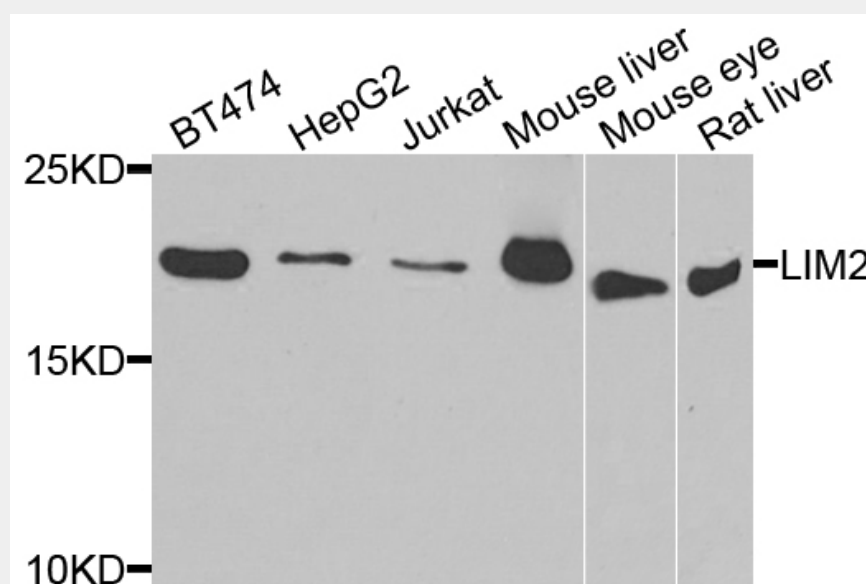
LIM2 antibody; Lens fiber membrane intrinsic protein antibody; MP18 antibody; MP19 antibody; MP20 antibody; LIM2 antibody

SwissProt:

P55344

Product Description

This gene encodes an eye lens-specific protein found at the junctions of lens fiber cells, where it may contribute to cell junctional organization. It acts as a receptor for calmodulin, and may play an important role in both lens development and cataractogenesis. Mutations in this gene have been associated with cataract formation. Alternatively spliced transcript variants encoding different isoforms have been found for this gene.



Western blot analysis of extracts of various cell lines, using LIM2 antibody at 1:1000 dilution. Secondary antibody: HRP Goat Anti-Rabbit IgG (H+L) at 1:10000 dilution. Lysates/proteins: 25ug per lane. Blocking buffer: 3% nonfat dry milk in TBST. Detection: ECL Basic Kit. Exposure time: 90s.

All products are for RESEARCH USE ONLY. Not for diagnostic & therapeutic purposes!