

Anti Villin antibody

Catalog No: tcsa8571



Available Sizes

Size: 100μl

Size: 200μl



Specifications

Application:

WB, ELISA

Species Reactivity:

Human, Mouse, Rat

Host Species:

Rabbit

Immunogen / Amino acids:

Synthesized peptide derived from Villin

Conjugation:

Unconjugated

Clonality:

Polyclonal

Isotype:

IgG

Form:

Liquid

Storage Buffer:

Liquid in PBS containing 50% glycerol, 0.5% BSA and 0.02% sodium azide.

Concentration:

1 mg/ml

Recommended Dilution:

WB 1:500-2000

ELISA 1:10000-20000

Storage Instruction:

Store at -20°C, and avoid repeat freeze-thaw cycles.

Alternative Names:

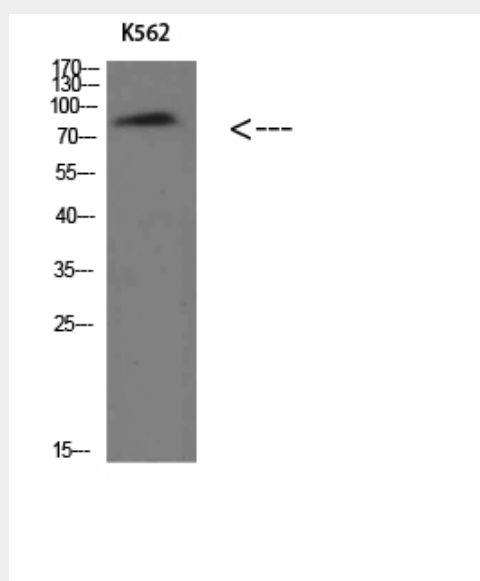
VIL1 antibody; VIL antibody; Villin-1 antibody

SwissProt:

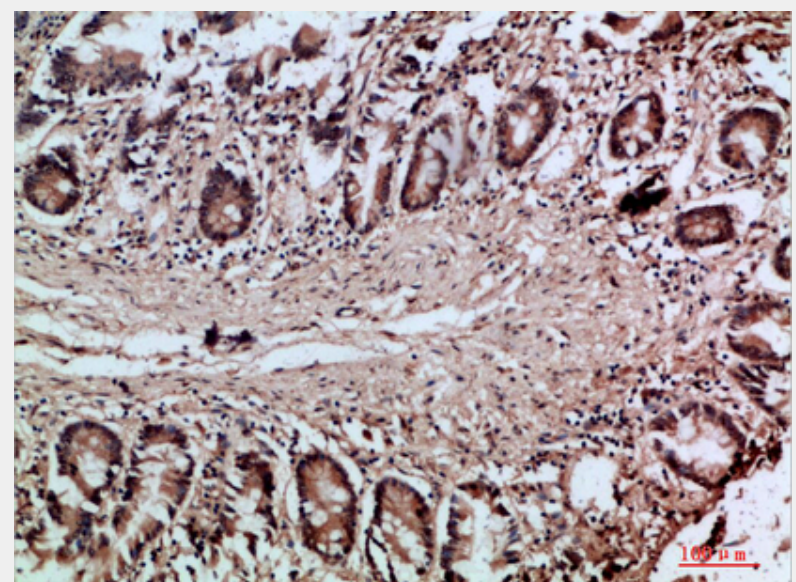
P09327_HUMAN

Product Description

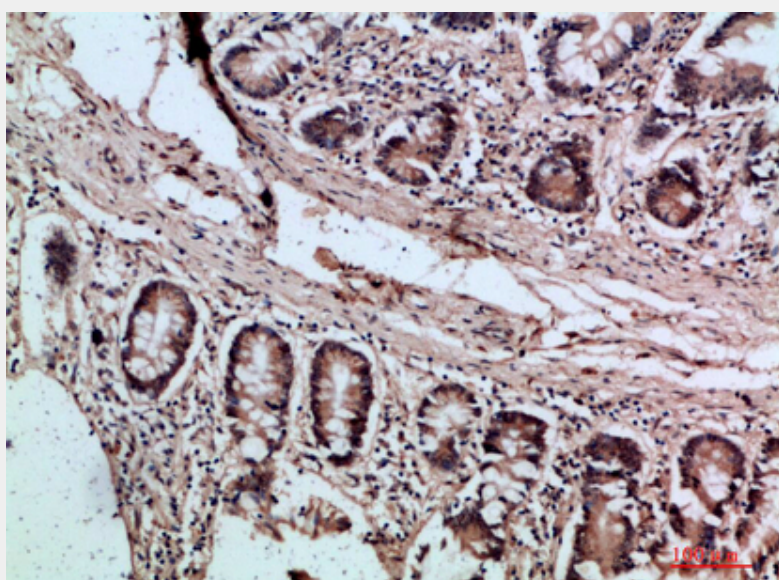
Rabbit polyclonal to Villin.



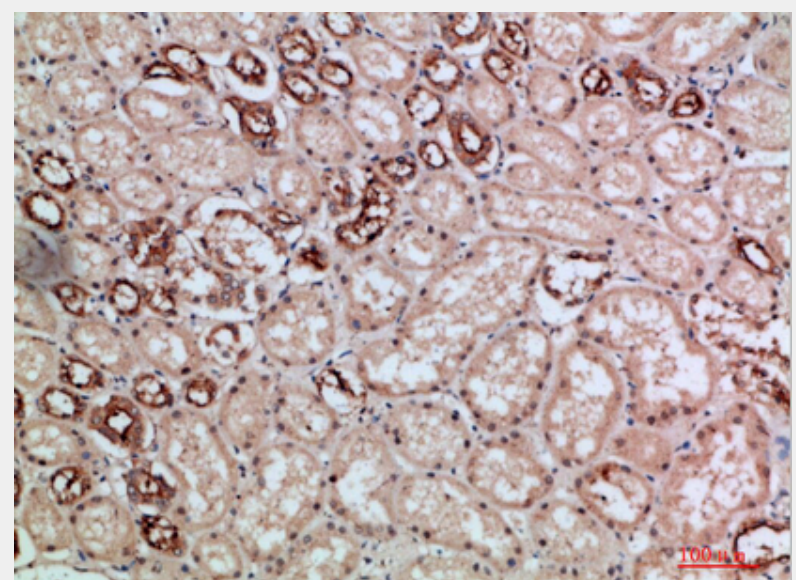
Western Blot (WB) analysis of K562 cells using Villin Polyclonal Antibody diluted at 1:500.



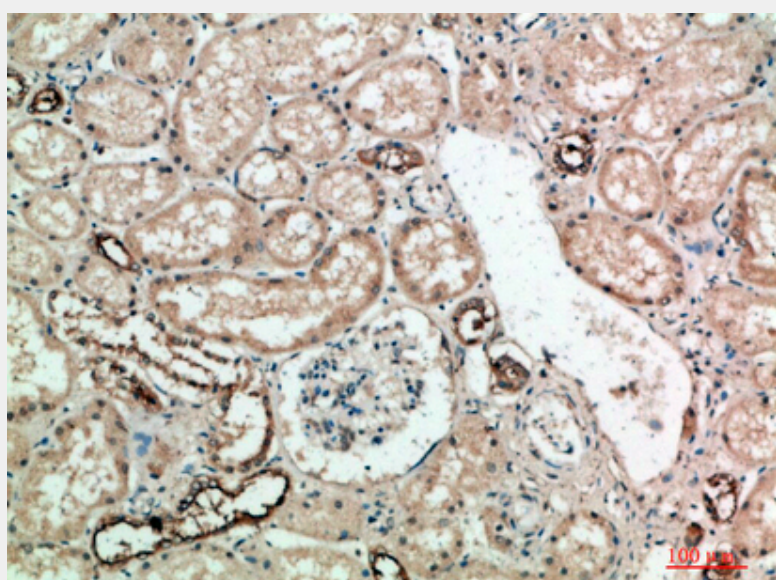
Immunohistochemical analysis of paraffin-embedded human-colon, antibody was diluted at 1:200.



Immunohistochemical analysis of paraffin-embedded human-colon, antibody was diluted at 1:200.



Immunohistochemical analysis of paraffin-embedded human-kidney, antibody was diluted at 1:200.



Immunohistochemical analysis of paraffin-embedded human-kidney, antibody was diluted at 1:200.

All products are for RESEARCH USE ONLY. Not for diagnostic & therapeutic purposes!