

Anti Fyn antibody

Catalog No: tcsa8085



Available Sizes

Size: 100μl



Specifications

Application:

WB, IHC-p, IF, FC, ELISA

Species Reactivity:

Human

Host Species:

Mouse

Immunogen / Amino acids:

Purified recombinant fragment of human Fyn expressed in E. Coli.

Conjugation:

Unconjugated

Clonality:

Monoclonal

Clones:

2A10

Isotype:

IgG1

Form:

Liquid

Storage Buffer:

Ascitic fluid containing 0.03% sodium azide.

Recommended Dilution:

WB 1:500-1:2000

IHC 1:200-1:1000

IF 1:200-1:1000

FC 1:200-1:400

ELISA 1:10000

Storage Instruction:

Store at -20°C, and avoid repeat freeze-thaw cycles.

Alternative Names:

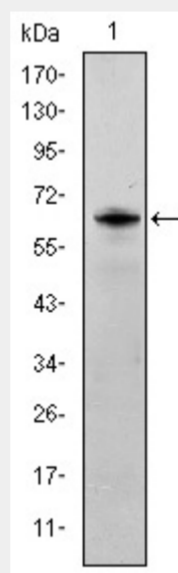
FYN antibody; Tyrosine-protein kinase Fyn antibody; Proto-oncogene Syn antibody; Proto-oncogene c-Fyn antibody; Src-like kinase antibody; SLK antibody; p59-Fyn antibody

SwissProt:

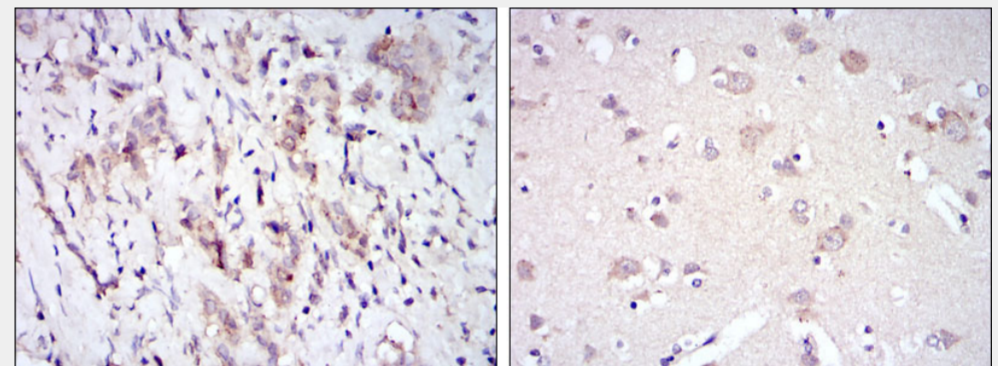
P06241_HUMAN

Product Description

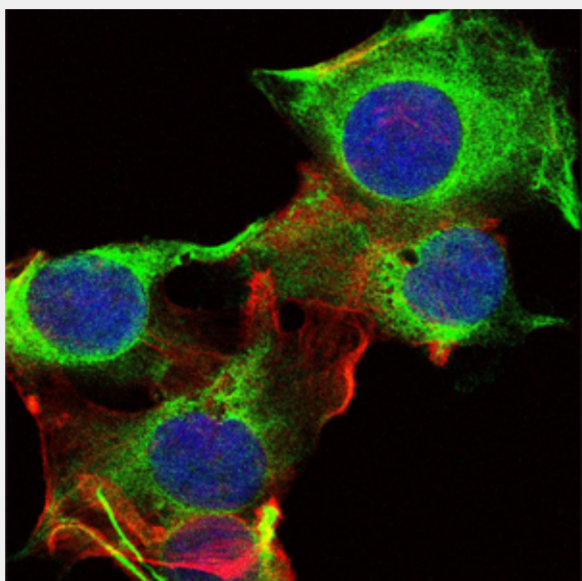
Mouse monoclonal to Fyn.



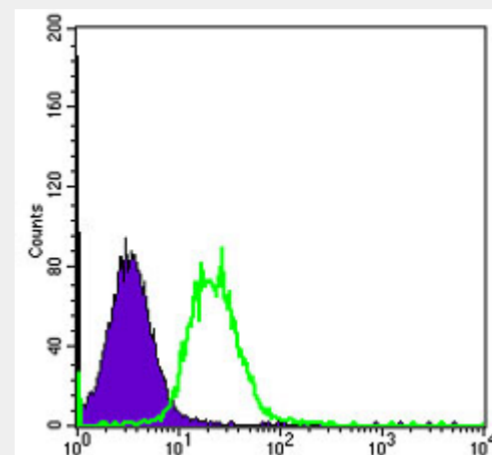
Western Blot (WB) analysis using Fyn Monoclonal Antibody against HeLa cell lysate.



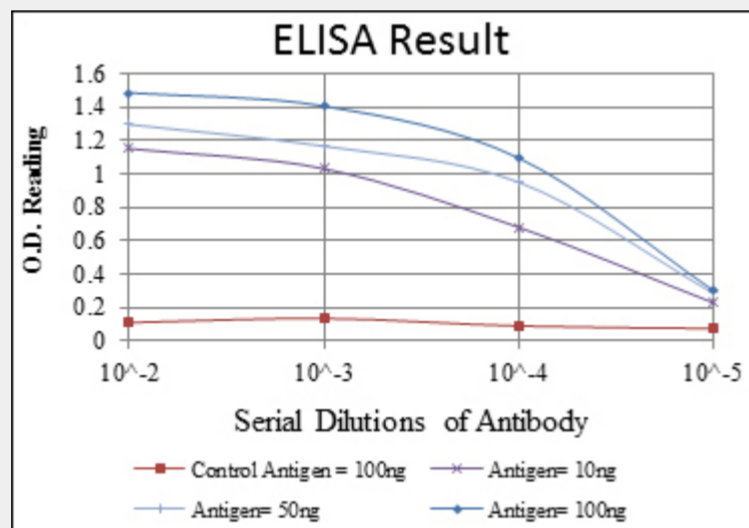
Immunohistochemistry (IHC) analysis of paraffin-embedded breast cancer tissues (left) and brain tissues (right) with DAB staining using Fyn Monoclonal Antibody.



Immunofluorescence (IF) analysis of U251 cells using Fyn Monoclonal Antibody (green). Blue: DRAQ5 fluorescent DNA dye. Red: Actin filaments have been labeled with Alexa Fluor-555 phalloidin.



Flow cytometric (FCM) analysis of HeLa cells using Fyn Monoclonal Antibody (green) and negative control (purple).



ELISA analysis of Fyn antibody.

All products are for RESEARCH USE ONLY. Not for diagnostic & therapeutic purposes!