

Anti Beclin 1 antibody

Catalog No: tcsa7856



Available Sizes

Size: 100µl



Specifications

Application:

WB, IHC-p, FC, ELISA

Species Reactivity:

Human

Host Species:

Mouse

Immunogen / Amino acids:

Purified recombinant fragment of human Beclin-1 expressed in E. Coli.

Conjugation:

Unconjugated

Clonality:

Monoclonal

Clones:

2A4

Isotype:

IgG1

Form:

Liquid

Storage Buffer:

Ascitic fluid containing 0.03% sodium azide.

Recommended Dilution:

WB 1:500-1:2000
IHC 1:200-1:1000
FC 1:200-1:400
ELISA 1:10000

Storage Instruction:

Store at -20°C, and avoid repeat freeze-thaw cycles.

Alternative Names:

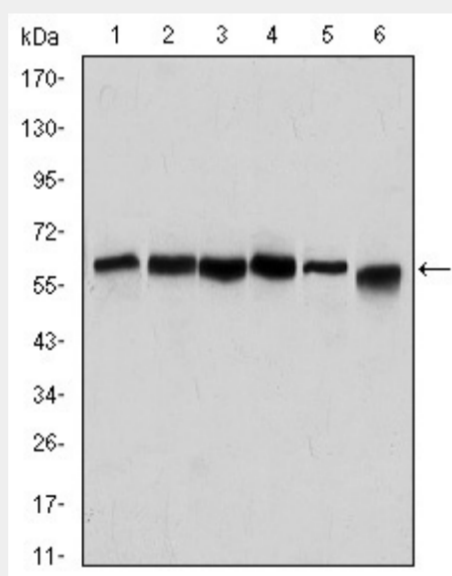
BECN1 antibody; GT197 antibody; Beclin-1 antibody; Coiled-coil myosin-like BCL2-interacting protein antibody; Protein GT197 antibody; Beclin-1-C 35 kDa antibody; Beclin-1-C 37 kDa antibody

SwissProt:

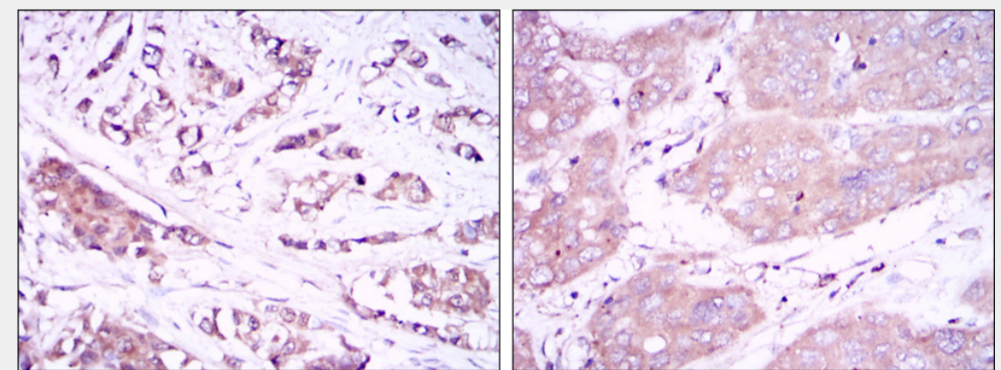
Q14457_HUMAN

Product Description

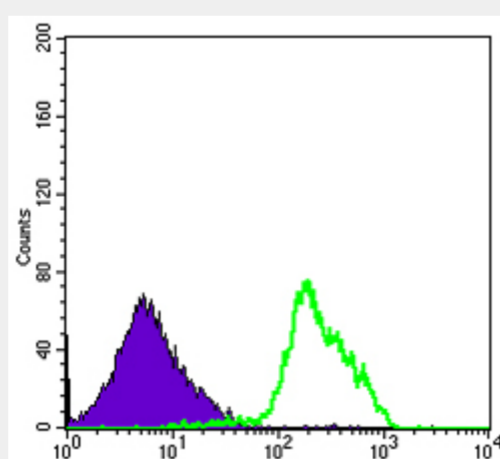
Mouse monoclonal to Beclin-1.



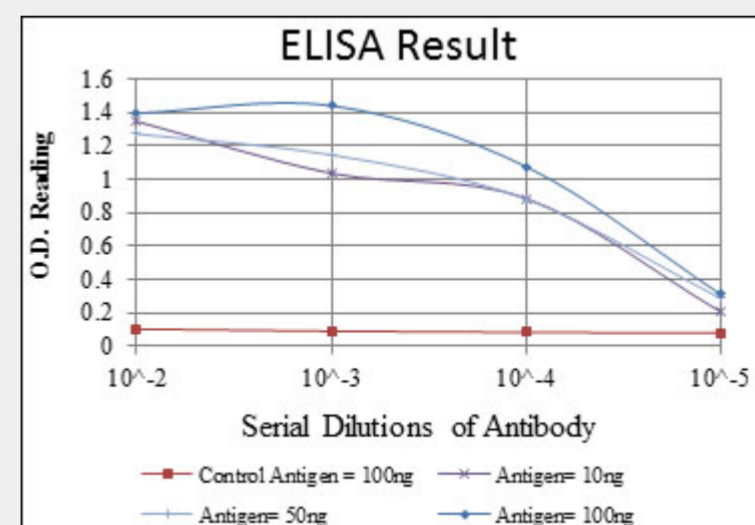
Western Blot (WB) analysis using Beclin-1 Monoclonal Antibody against HeLa (1), A431 (2), MCF-7 (3), RAJI (4), Jurkat (5) and SKBR-3 (6) cell lysate.



Immunohistochemistry (IHC) analysis of paraffin-embedded breast cancer tissues (left) and liver cancer tissues (right) with DAB staining using Beclin-1 Monoclonal Antibody.



Flow cytometric (FCM) analysis of RAJI cells using Beclin-1 Monoclonal Antibody (green) and negative control (purple).



ELISA analysis of Beclin-1 antibody.

All products are for RESEARCH USE ONLY. Not for diagnostic & therapeutic purposes!