

# Anti ALDH1A1 antibody

Catalog No: tcsa7818



## Available Sizes

**Size:** 100μl



## Specifications

**Application:**

WB, IHC-p, ELISA

**Species Reactivity:**

Human

**Host Species:**

Mouse

**Immunogen / Amino acids:**

Purified recombinant fragment of human ALDH1A1 expressed in E. Coli.

**Conjugation:**

Unconjugated

**Clonality:**

Monoclonal

**Clones:**

5A11

**Isotype:**

IgG1

**Form:**

Liquid

**Storage Buffer:**

Ascitic fluid containing 0.03% sodium azide.

#### Recommended Dilution:

WB 1:500-1:2000

IHC 1:200-1:1000

ELISA 1:10000

#### Storage Instruction:

Store at -20°C, and avoid repeat freeze-thaw cycles.

#### Alternative Names:

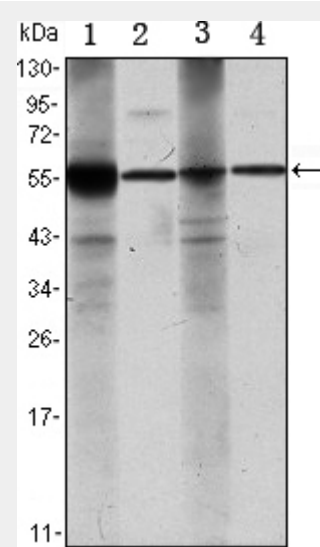
ALDH1A1 antibody; ALDC antibody; ALDH1 antibody; PUMB1 antibody; Retinal dehydrogenase 1 antibody; RALDH 1 antibody; RalDH1 antibody; ALDH-E1 antibody; ALHDII antibody; Aldehyde dehydrogenase family 1 member A1 antibody; Alde

#### SwissProt:

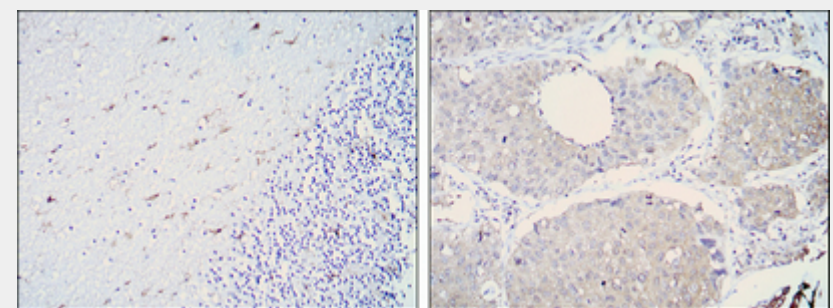
P00352\_HUMAN

### Product Description

Mouse monoclonal to ALDH1A1.



Western Blot (WB) analysis using ALDH1A1 Monoclonal Antibody against Raji (1), Jurkat (2), THP-1 (3) and K562 (4) cell lysate.



Immunohistochemistry (IHC) analysis of paraffin-embedded cerebellum tissues (left) and lung cancer (right) with DAB staining using ALDH1A1 Monoclonal Antibody.

All products are for RESEARCH USE ONLY. Not for diagnostic & therapeutic purposes!