

Anti CD19 antibody

Catalog No: tcsa7270



Available Sizes

Size: 100μl

Size: 200μl



Specifications

Application:

WB, IHC-p, ELISA

Species Reactivity:

Human

Host Species:

Rabbit

Immunogen / Amino acids:

Synthesized peptide derived from human CD19.

Conjugation:

Unconjugated

Clonality:

Polyclonal

Isotype:

IgG

Form:

Liquid

Storage Buffer:

Liquid in PBS containing 50% glycerol, 0.5% BSA and 0.02% sodium azide.

Concentration:

1 mg/ml

Recommended Dilution:

WB 1:500-1:2000
IHC-P 1:100-1:300
ELISA 1:10000

Storage Instruction:

Store at -20°C, and avoid repeat freeze-thaw cycles.

Alternative Names:

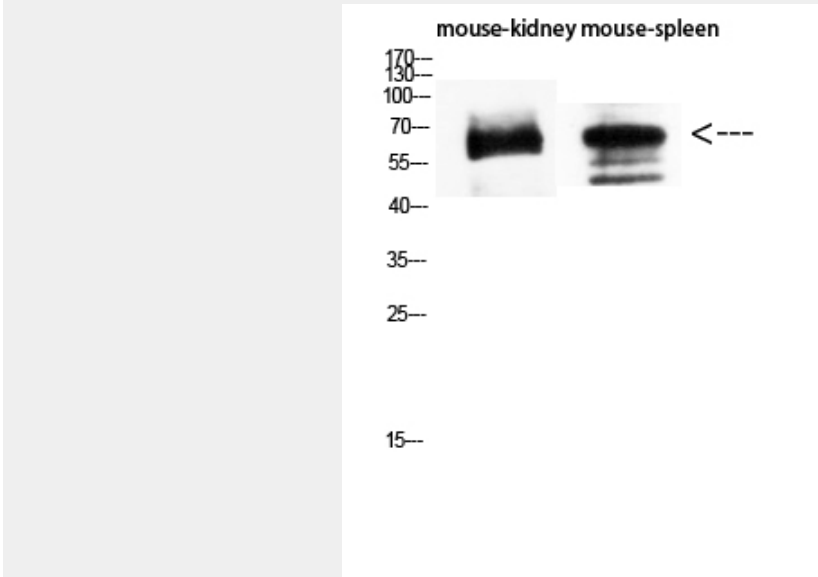
CD19 antibody; B-lymphocyte antigen CD19 antibody; B-lymphocyte surface antigen B4 antibody; Differentiation antigen CD19 antibody; T-cell surface antigen Leu-12 antibody; CD antigen CD19 antibody

SwissProt:

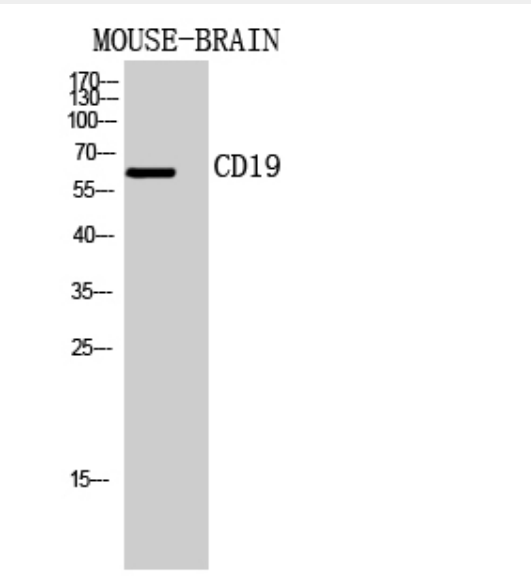
P15391_HUMAN

Product Description

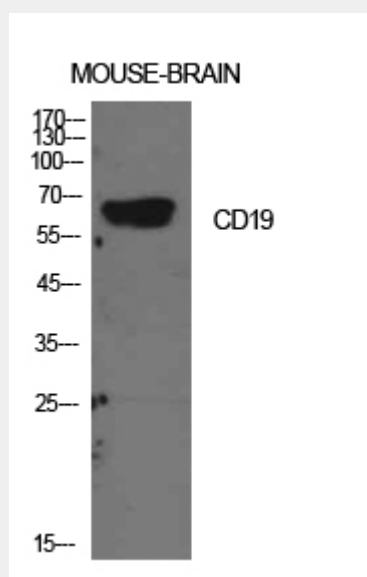
Rabbit polyclonal to CD19.



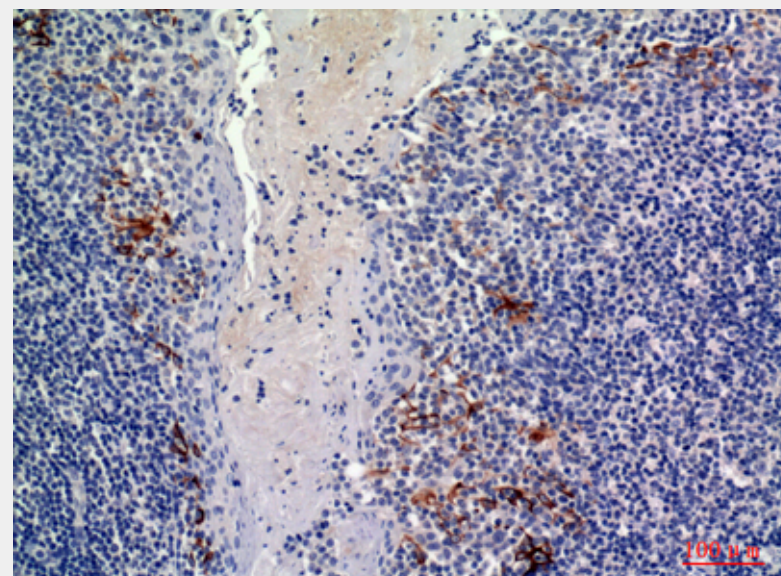
Western Blot (WB) analysis of Mouse Kidney Mouse Spleen using CD19 Polyclonal Antibody diluted at 1:1500.



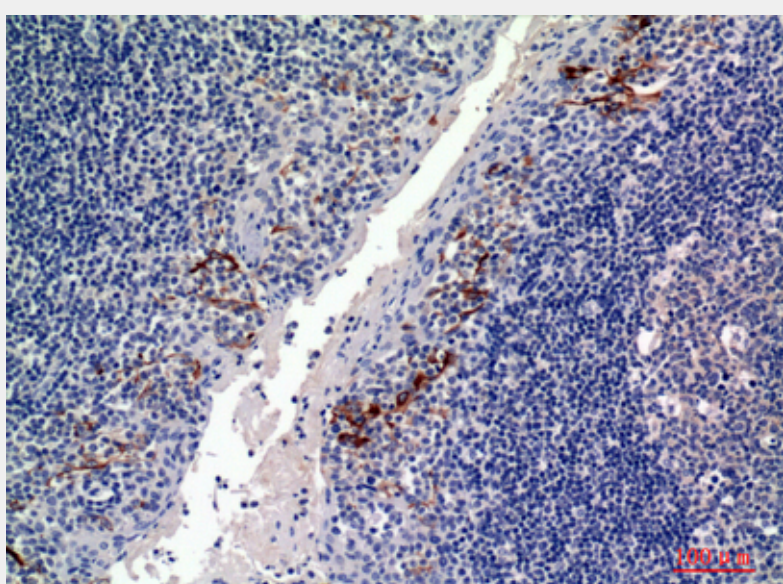
Western Blot (WB) analysis of Mouse Brain cells using CD19 Polyclonal Antibody.



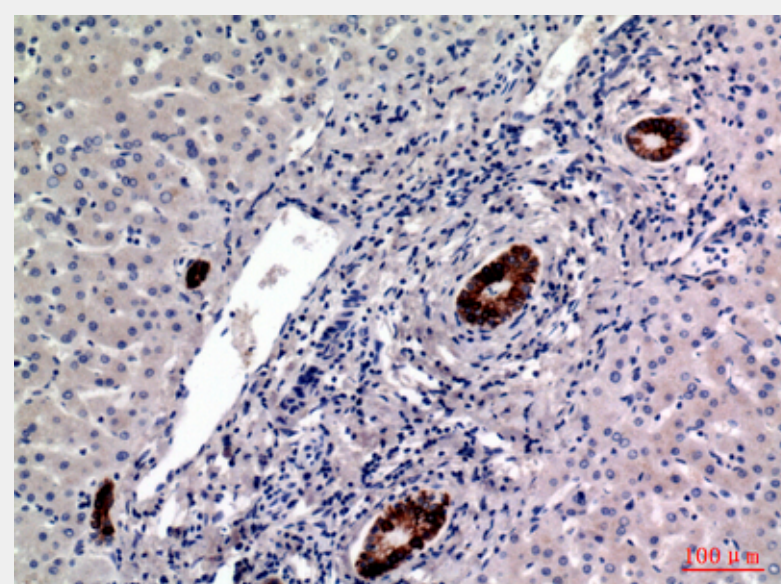
Western Blot (WB) analysis of Mouse Brain cells using CD19 Polyclonal Antibody.



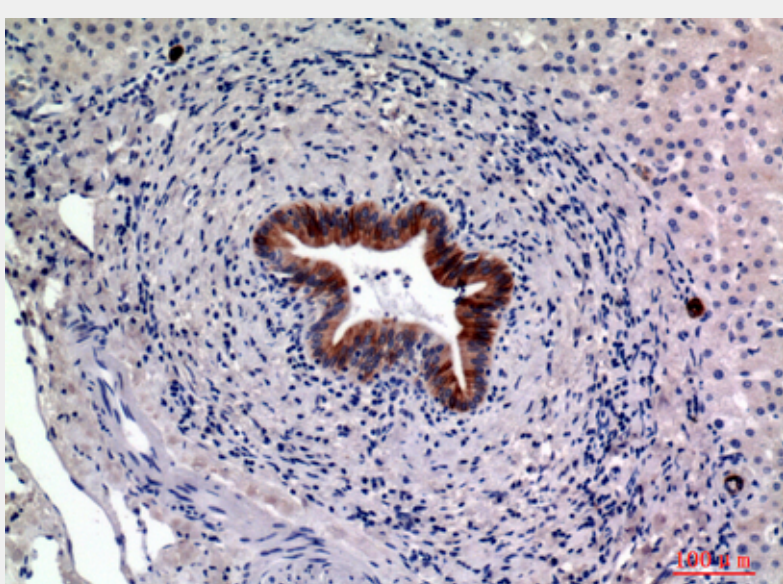
Immunohistochemistry (IHC) analysis of paraffin-embedded Human Tonsils, antibody was diluted at 1:100.



Immunohistochemistry (IHC) analysis of paraffin-embedded Human Tonsils, antibody was diluted at 1:100.



Immunohistochemistry (IHC) analysis of paraffin-embedded Human Liver, antibody was diluted at 1:100.



Immunohistochemistry (IHC) analysis of paraffin-embedded Human Liver, antibody was diluted at 1:100.

All products are for RESEARCH USE ONLY. Not for diagnostic & therapeutic purposes!