

Anti Nrf2 (Acetyl K599) antibody

Catalog No: tcsa7225



Available Sizes

Size: 100μl

Size: 200μl



Specifications

Application:

WB, IHC-p, ELISA

Species Reactivity:

Human, Mouse, Rat

Host Species:

Rabbit

Immunogen / Amino acids:

Synthesized peptide derived from human Nrf2 around the acetylation site of K599.

Conjugation:

Unconjugated

Clonality:

Polyclonal

Isotype:

IgG

Form:

Liquid

Storage Buffer:

Liquid in PBS containing 50% glycerol, 0.5% BSA and 0.02% sodium azide.

Concentration:

1 mg/ml

Recommended Dilution:

WB 1:500-1:2000

IHC-P 1:100-300 ELISA 1:10000

Storage Instruction:

Store at -20°C, and avoid repeat freeze-thaw cycles.

Alternative Names:

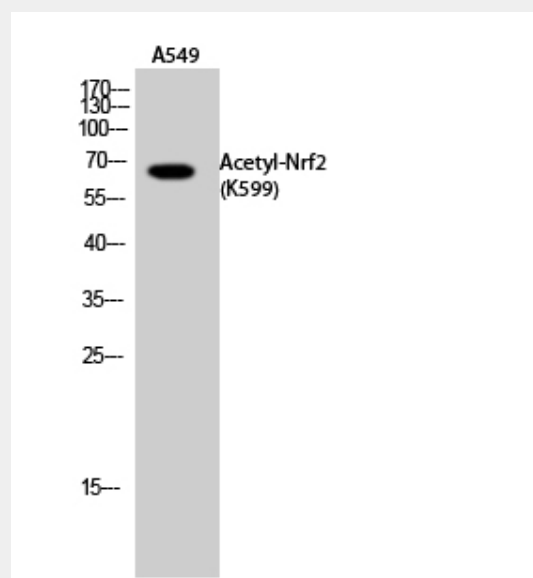
NFE2L2 antibody; NRF2 antibody; Nuclear factor erythroid 2-related factor 2 antibody; NF-E2-related factor 2 antibody; NFE2-related factor 2 antibody; HEBP1 antibody; Nuclear factor, erythroid derived 2, like 2 antibody; Nrf2 (Acetyl

SwissProt:

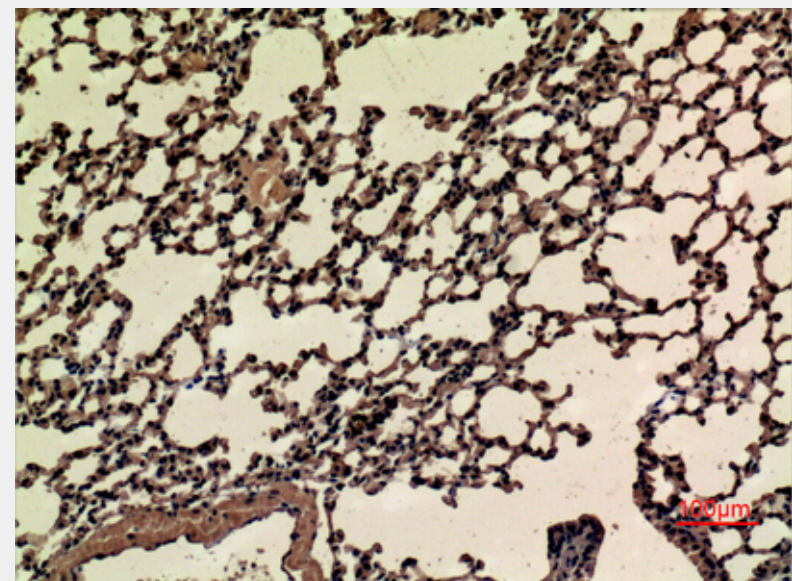
Q16236_HUMAN

Product Description

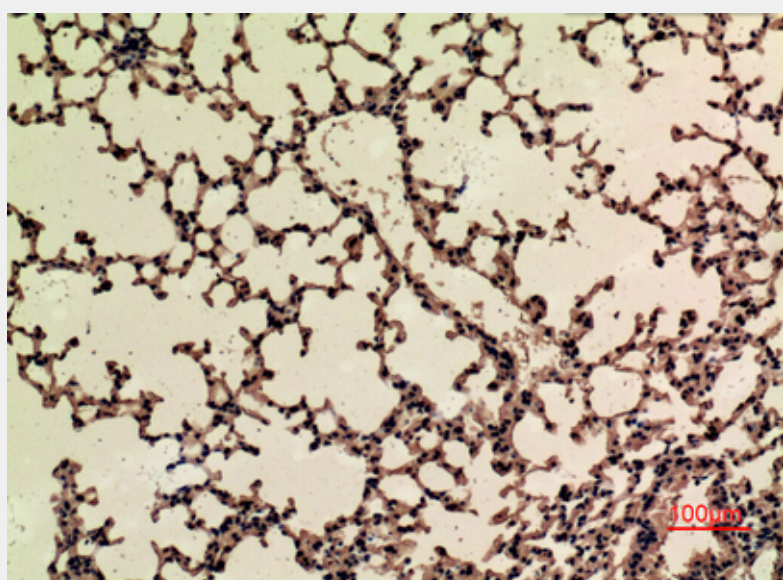
Rabbit polyclonal to Acetyl-Nrf2 (K599).



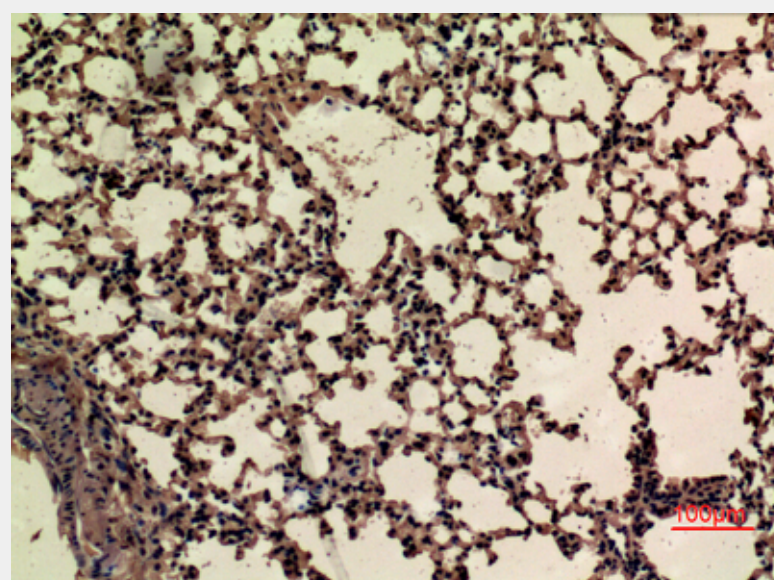
Western Blot (WB) analysis of A549 cells using Acetyl-Nrf2 (K599) Polyclonal Antibody.



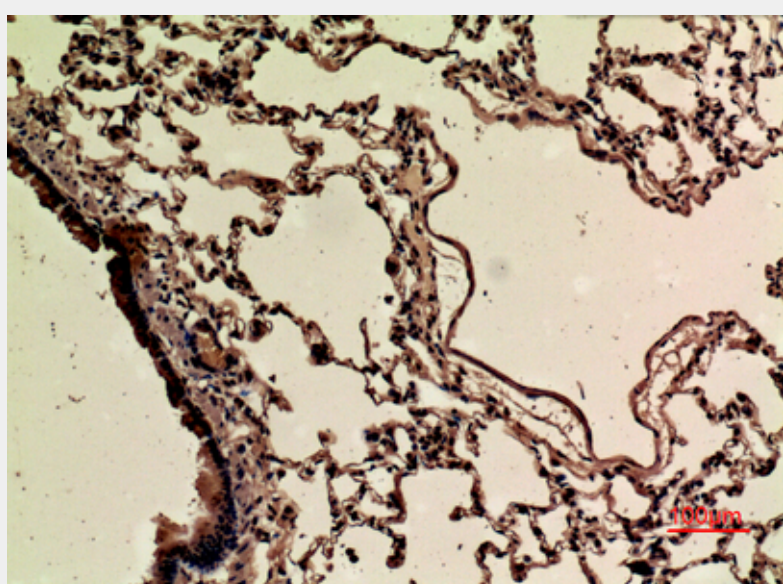
Immunohistochemistry (IHC) analysis of paraffin-embedded Rat Lung, antibody was diluted at 1:100.



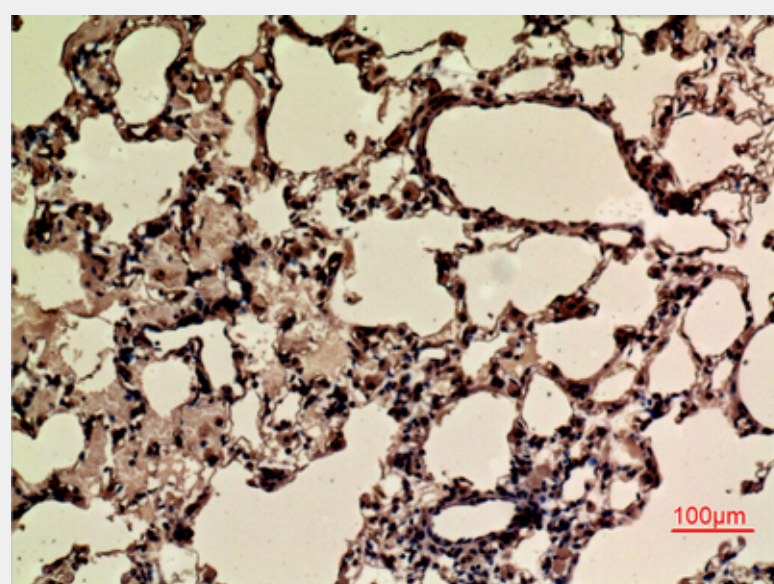
Immunohistochemistry (IHC) analysis of paraffin-embedded Rat Lung, antibody was diluted at 1:100.



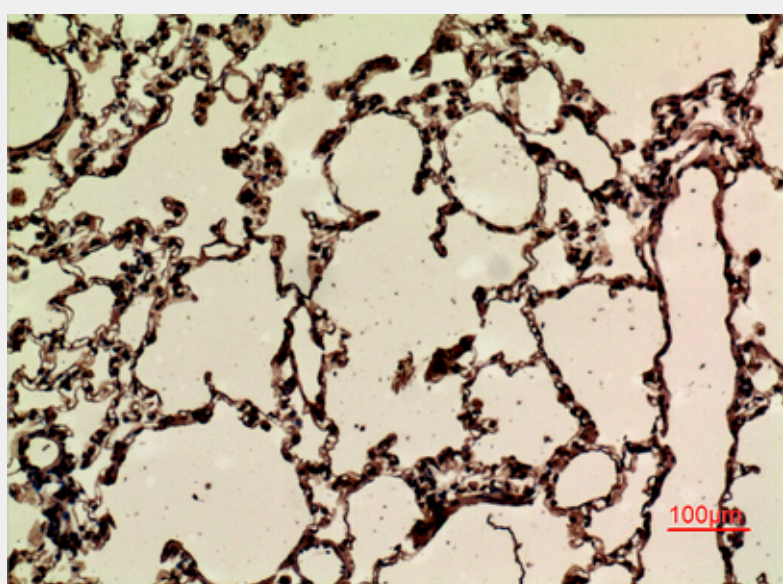
Immunohistochemistry (IHC) analysis of paraffin-embedded Rat Lung, antibody was diluted at 1:100.



Immunohistochemistry (IHC) analysis of paraffin-embedded Mouse Lung, antibody was diluted at 1:100.



Immunohistochemistry (IHC) analysis of paraffin-embedded Mouse Lung, antibody was diluted at 1:100.



Immunohistochemistry (IHC) analysis of paraffin-embedded Mouse Lung, antibody was diluted at 1:100.

All products are for RESEARCH USE ONLY. Not for diagnostic & therapeutic purposes!