

# Anti Plant actin antibody

Catalog No: tcsa7086



## Available Sizes

---

**Size:** 100μl

**Size:** 200μl



## Specifications

---

**Application:**

WB

**Species Reactivity:**

Arabidopsis, Nicotiana tabacum, Oryza sativa, Hordeum vulgare

**Host Species:**

Rabbit

**Immunogen / Amino acids:**

Recombinant Protein

**Conjugation:**

Unconjugated

**Clonality:**

Polyclonal

**Isotype:**

IgG

**Form:**

Liquid

**Storage Buffer:**

Liquid in PBS containing 50% glycerol, 0.5% BSA and 0.02% sodium azide.

**Recommended Dilution:**

WB 1:3000

**Storage Instruction:**

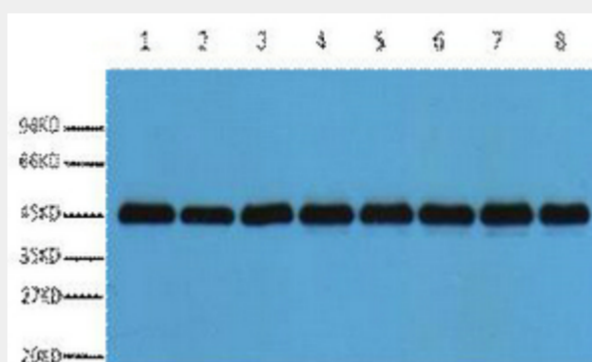
Store at -20°C, and avoid repeat freeze-thaw cycles.

**Alternative Names:**

Plant-actin antibody

**Product Description**

Rabbit polyclonal to Plant-actin.



Western Blot (WB) analysis of *Nicotiana tabacum* leaf (1), *Nicotiana tabacum* root (2), *Nicotiana* seed (3), *Oryza sativa* flower (4), *Oryza sativa* seed (5), *Oryza sativa* leaf (6), *Hordeum vulgare* seed (7), *Hordeum vulgare* leaves (8), diluted at 1:3000.

All products are for RESEARCH USE ONLY. Not for diagnostic & therapeutic purposes!