

# Anti HMG 1 antibody

Catalog No: tcsa6859



## Available Sizes

---

**Size:** 100μl

**Size:** 200μl



## Specifications

---

**Application:**

WB, IHC-p, ELISA

**Species Reactivity:**

Human, Mouse, Rat

**Host Species:**

Rabbit

**Immunogen / Amino acids:**

Synthesized peptide derived from human HMG-1.

**Conjugation:**

Unconjugated

**Clonality:**

Polyclonal

**Isotype:**

IgG

**Form:**

Liquid

**Storage Buffer:**

Liquid in PBS containing 50% glycerol, 0.5% BSA and 0.02% sodium azide.

**Concentration:**

1 mg/ml

**Recommended Dilution:**

WB 1:500-1:2000

IHC-P 1:100-1:300

ELISA 1:20000

**Storage Instruction:**

Store at -20°C, and avoid repeat freeze-thaw cycles.

**Alternative Names:**

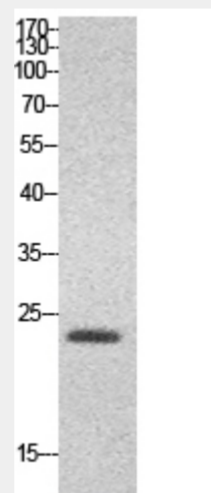
HMGB1 antibody; HMG1 antibody; High mobility group protein B1 antibody; High mobility group protein 1 antibody; HMG-1 antibody

**SwissProt:**

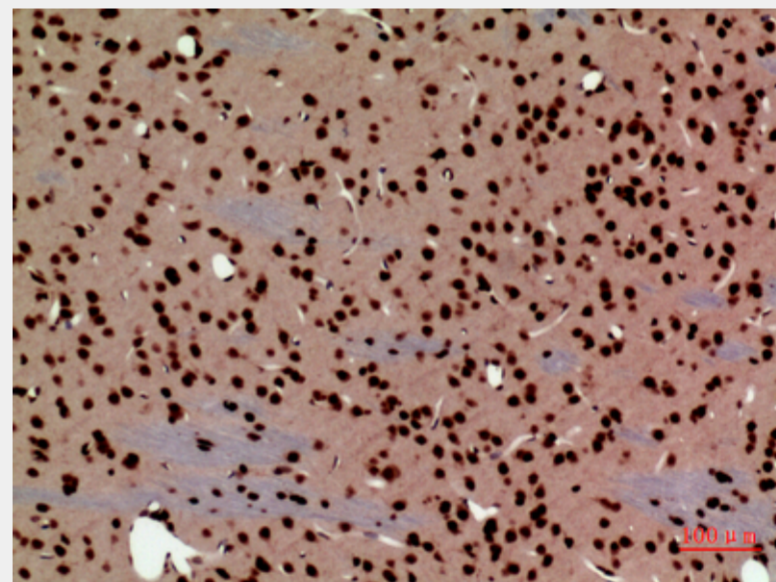
P09429\_HUMAN

**Product Description**

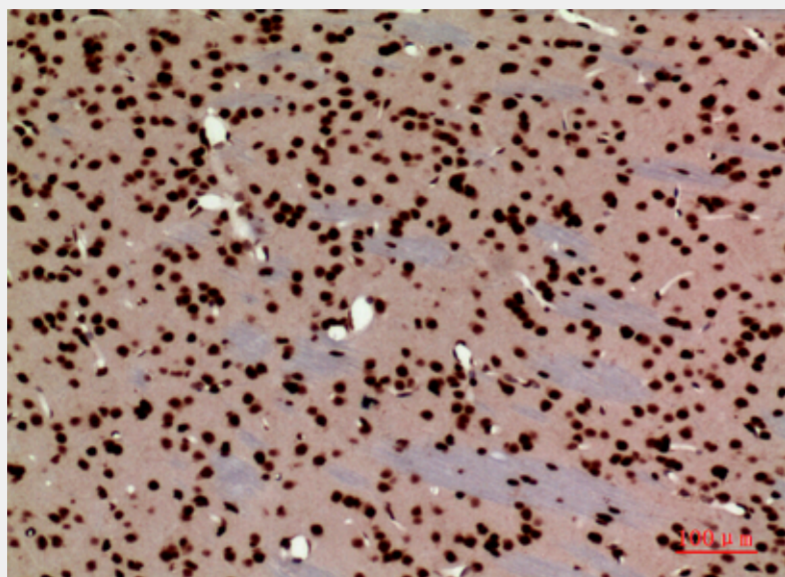
Rabbit polyclonal to HMG-1.



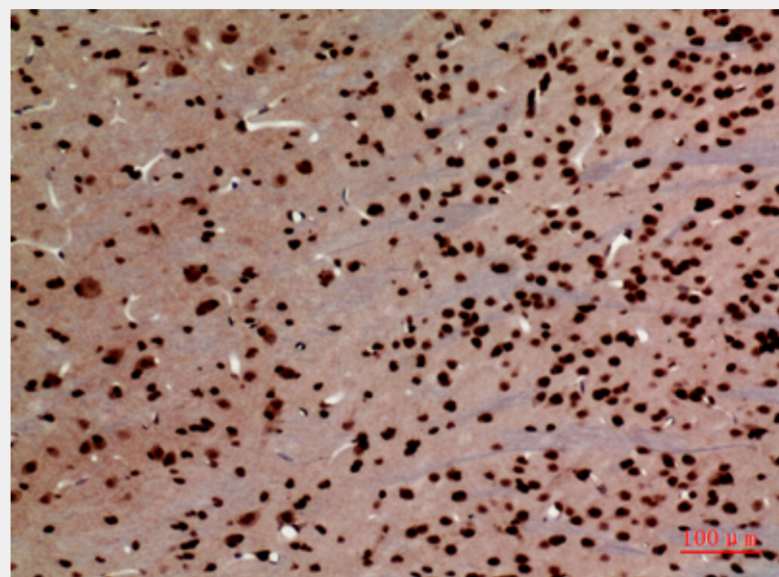
Western Blot (WB) analysis of HeLa cells using HMG-1 Polyclonal Antibody.



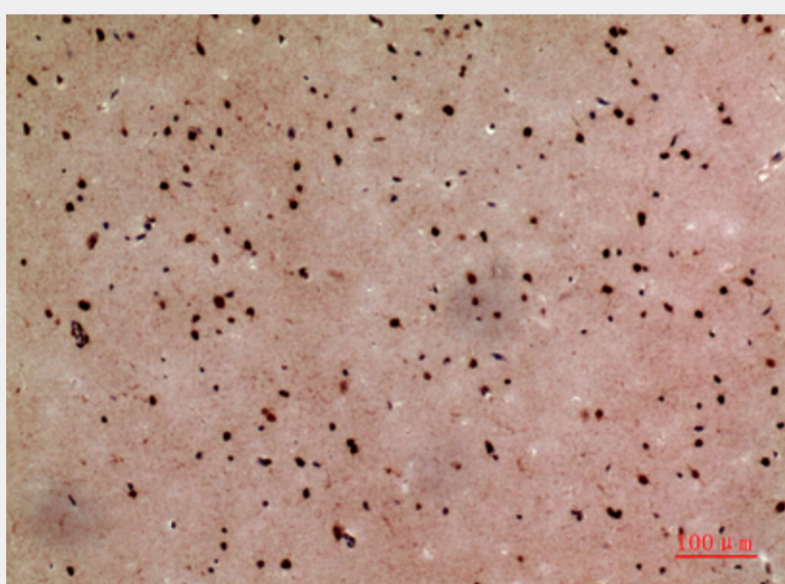
Immunohistochemistry (IHC) analysis of paraffin-embedded Rat Brain, antibody was diluted at 1:100.



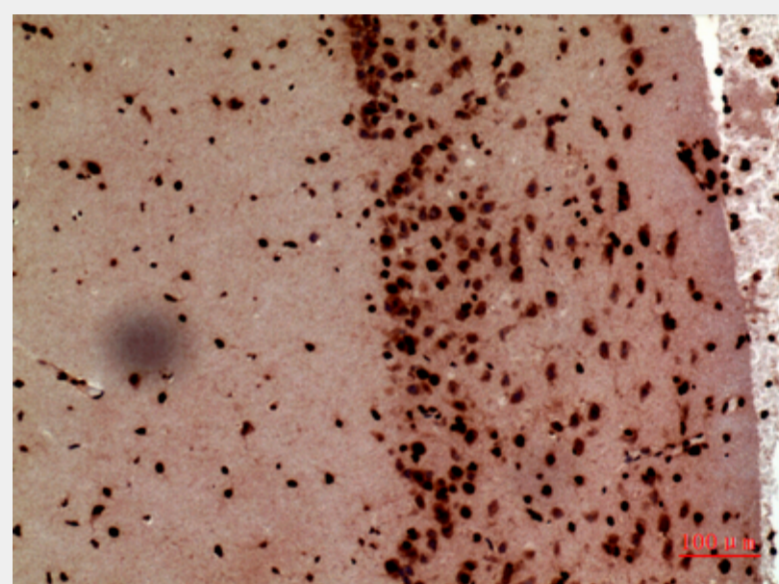
Immunohistochemistry (IHC) analysis of paraffin-embedded Rat Brain, antibody was diluted at 1:100.



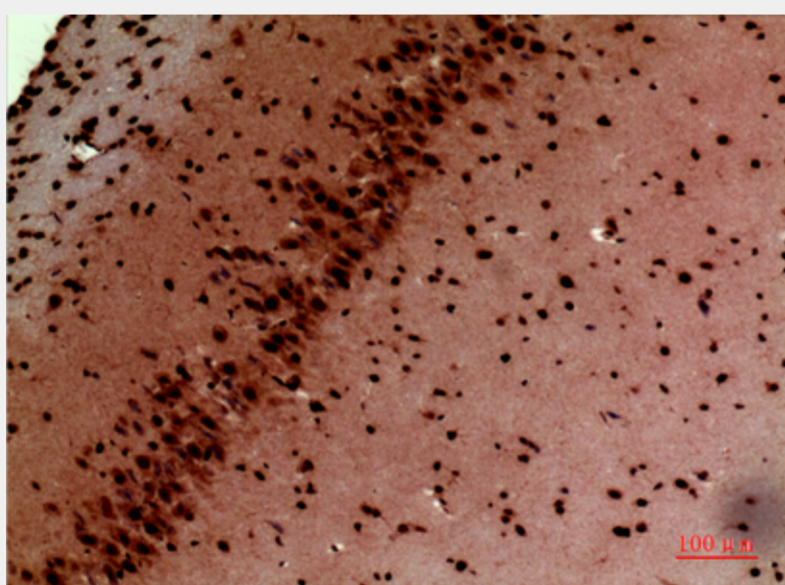
Immunohistochemistry (IHC) analysis of paraffin-embedded Rat Brain, antibody was diluted at 1:100.



Immunohistochemistry (IHC) analysis of paraffin-embedded Mouse Brain, antibody was diluted at 1:100.



Immunohistochemistry (IHC) analysis of paraffin-embedded Mouse Brain, antibody was diluted at 1:100.



Immunohistochemistry (IHC) analysis of paraffin-embedded Mouse Brain, antibody was diluted at 1:100.

All products are for RESEARCH USE ONLY. Not for diagnostic & therapeutic purposes!