

# Anti HRP 3 antibody

Catalog No: tcsa6847



## Available Sizes

**Size:** 100μl

**Size:** 200μl



## Specifications

**Application:**

WB, IHC-p, ELISA

**Species Reactivity:**

Human, Mouse, Rat

**Host Species:**

Rabbit

**Immunogen / Amino acids:**

Synthesized peptide derived from human HRP-3.

**Conjugation:**

Unconjugated

**Clonality:**

Polyclonal

**Isotype:**

IgG

**Form:**

Liquid

**Storage Buffer:**

Liquid in PBS containing 50% glycerol, 0.5% BSA and 0.02% sodium azide.

**Concentration:**

1 mg/ml

**Recommended Dilution:**

WB 1:500-1:2000

IHC-P 1:100-1:300

ELISA 1:20000

**Storage Instruction:**

Store at -20°C, and avoid repeat freeze-thaw cycles.

**Alternative Names:**

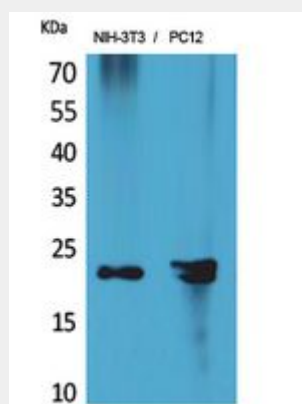
HDGFL3 antibody; HDGF2 antibody; HDGFRP3 antibody; CGI-142 antibody; Hepatoma-derived growth factor-related protein 3 antibody; HRP-3 antibody; Hepatoma-derived growth factor 2 antibody; HDGF-2 antibody

**SwissProt:**

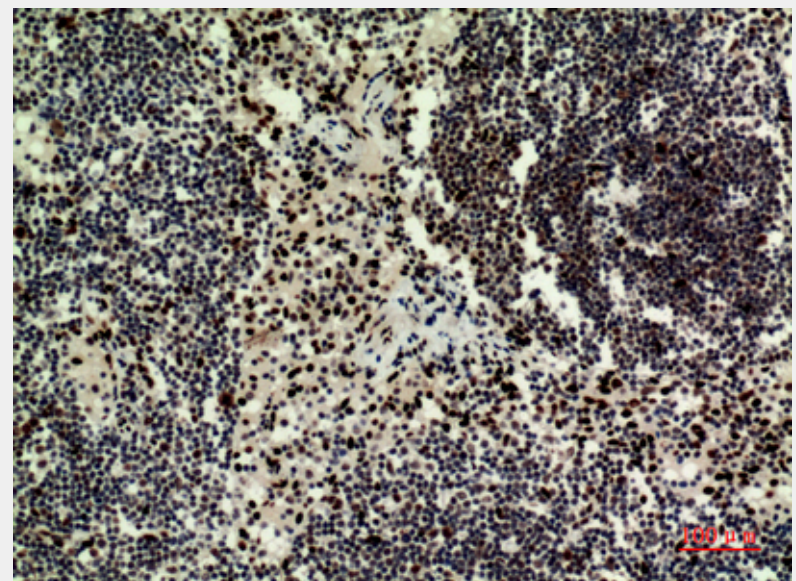
Q9Y3E1\_HUMAN

**Product Description**

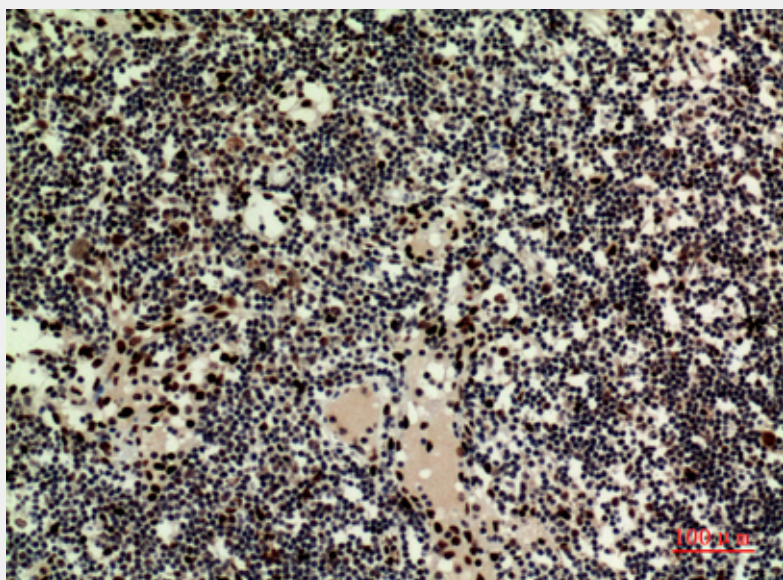
Rabbit polyclonal to HRP-3.



Western Blot (WB) analysis of NIH-3T3, PC12 cells using HRP-3 Polyclonal Antibody.



Immunohistochemistry (IHC) analysis of paraffin-embedded Human Lymph Nodes, antibody was diluted at 1:100.



Immunohistochemistry (IHC) analysis of paraffin-embedded Human Lymph Nodes, antibody was diluted at 1:100.

All products are for RESEARCH USE ONLY. Not for diagnostic & therapeutic purposes!