

Anti CacyBP antibody

Catalog No: tcsa6752



Available Sizes

Size: 100μl

Size: 200μl



Specifications

Application:

WB, IHC-p, ELISA

Species Reactivity:

Human, Mouse, Rat

Host Species:

Rabbit

Immunogen / Amino acids:

Synthesized peptide derived from human CacyBP.

Conjugation:

Unconjugated

Clonality:

Polyclonal

Isotype:

IgG

Form:

Liquid

Storage Buffer:

Liquid in PBS containing 50% glycerol, 0.5% BSA and 0.02% sodium azide.

Concentration:

1 mg/ml

Recommended Dilution:

WB 1:500-1:2000

IHC-P 1:100-1:300

ELISA 1:20000

Storage Instruction:

Store at -20°C, and avoid repeat freeze-thaw cycles.

Alternative Names:

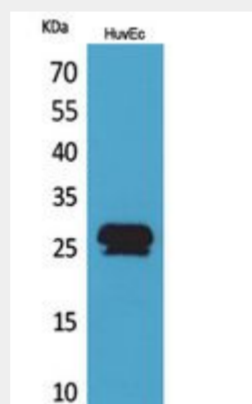
CACYBP antibody; S100A6BP antibody; SIP antibody; PNAS-107 antibody; Calcyclin-binding protein antibody; CacyBP antibody; hCacyBP antibody; S100A6-binding protein antibody; Siah-interacting protein antibody

SwissProt:

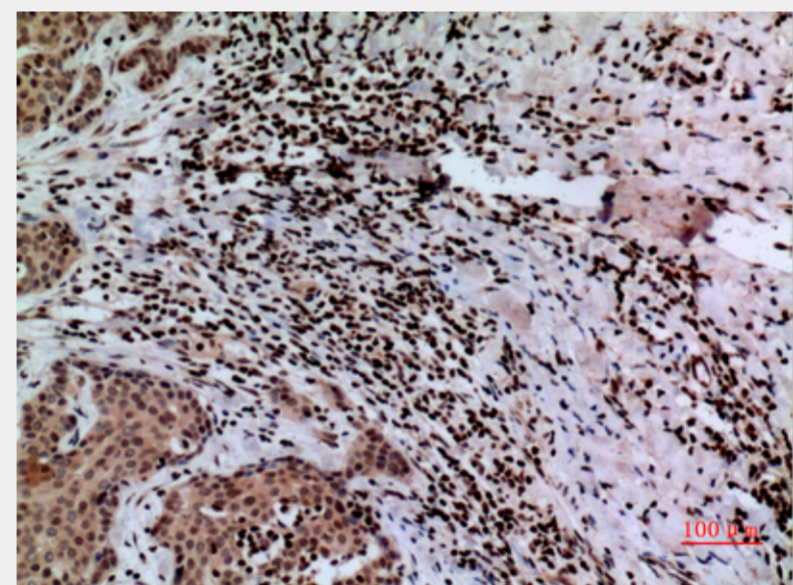
Q9HB71_HUMAN

Product Description

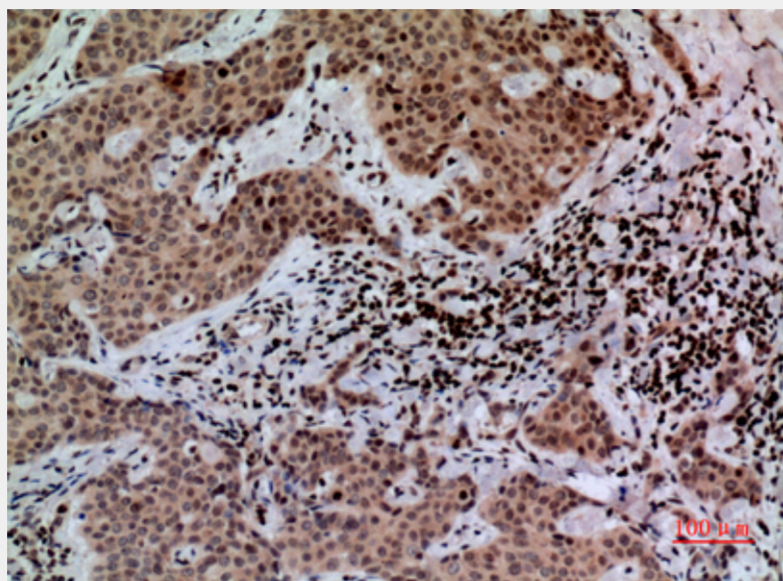
Rabbit polyclonal to CacyBP.



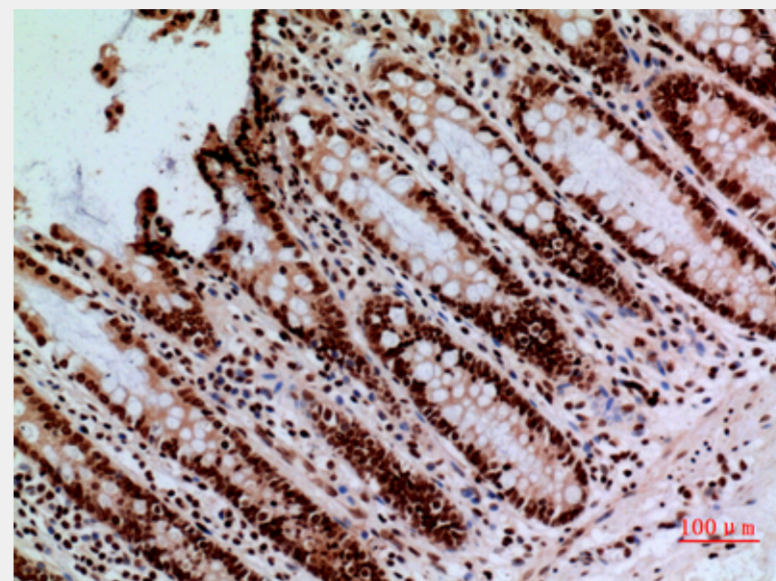
Western Blot (WB) analysis of HuvEc cells using CacyBP Polyclonal Antibody.



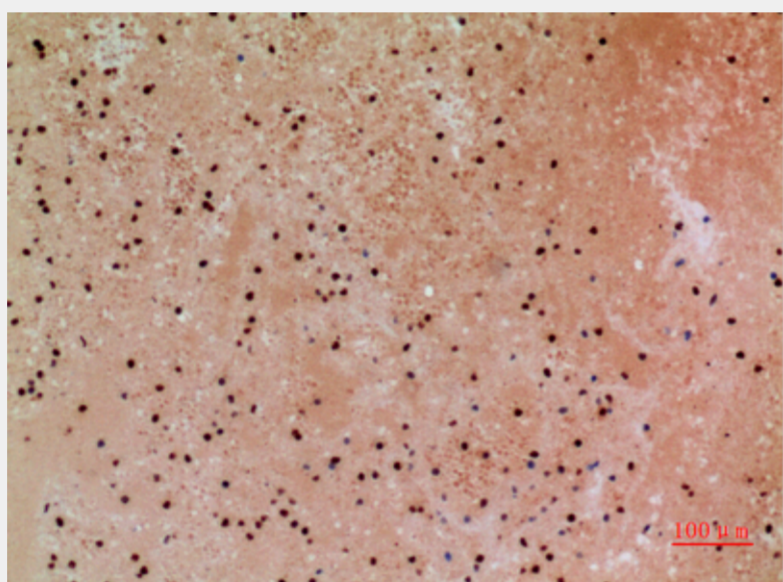
Immunohistochemistry (IHC) analysis of paraffin-embedded Human Mammary Cancer, antibody was diluted at 1:100.



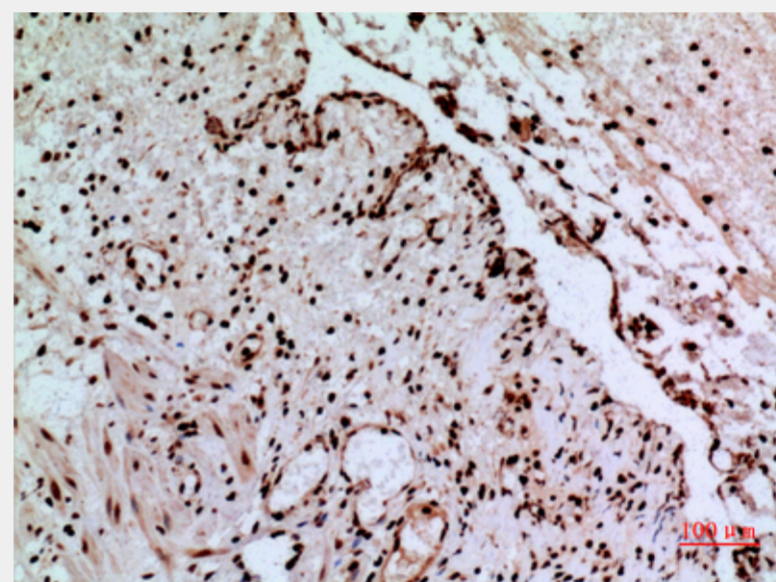
Immunohistochemistry (IHC) analysis of paraffin-embedded Human Mammary Cancer, antibody was diluted at 1:100.



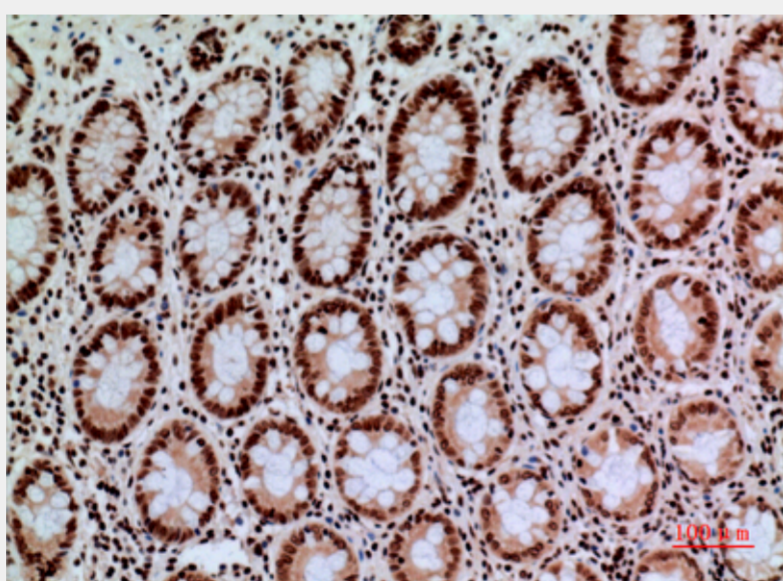
Immunohistochemistry (IHC) analysis of paraffin-embedded Human Colon, antibody was diluted at 1:100.



Immunohistochemistry (IHC) analysis of paraffin-embedded Human Colon, antibody was diluted at 1:100.



Immunohistochemistry (IHC) analysis of paraffin-embedded Human Colon, antibody was diluted at 1:100.



Immunohistochemistry (IHC) analysis of paraffin-embedded Human Colon, antibody was diluted at 1:100.

All products are for RESEARCH USE ONLY. Not for diagnostic & therapeutic purposes!