

# Anti gp91 phox antibody

Catalog No: tcsa6746



## Available Sizes

---

**Size:** 100μl

**Size:** 200μl



## Specifications

---

**Application:**

WB, IHC-p, ELISA

**Species Reactivity:**

Human

**Host Species:**

Rabbit

**Immunogen / Amino acids:**

Synthesized peptide derived from human gp91-phox.

**Conjugation:**

Unconjugated

**Clonality:**

Polyclonal

**Isotype:**

IgG

**Form:**

Liquid

**Storage Buffer:**

Liquid in PBS containing 50% glycerol, 0.5% BSA and 0.02% sodium azide.

**Concentration:**

1 mg/ml

**Recommended Dilution:**

WB 1:500-1:2000

IHC-P 1:100-1:300

ELISA 1:20000

**Storage Instruction:**

Store at -20°C, and avoid repeat freeze-thaw cycles.

**Alternative Names:**

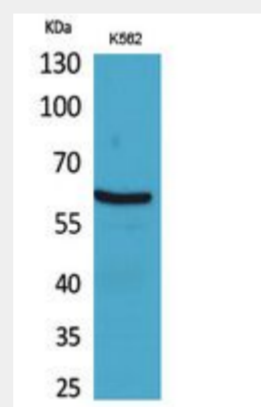
CYBB antibody; NOX2 antibody; Cytochrome b-245 heavy chain antibody; CGD91-phox antibody; Cytochrome b antibody; 558 subunit beta antibody; Cytochrome b558 subunit beta antibody; Heme-binding membrane glycoprotein gp91phox antibody

**SwissProt:**

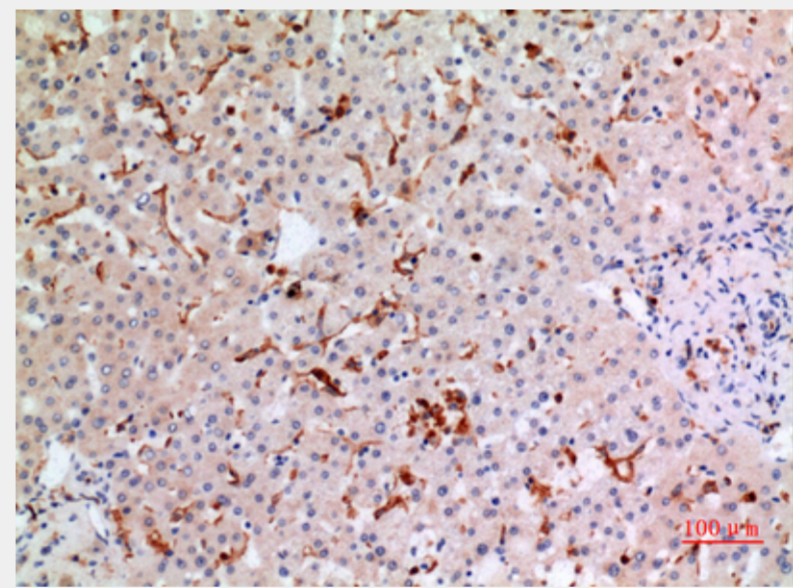
P04839\_HUMAN

**Product Description**

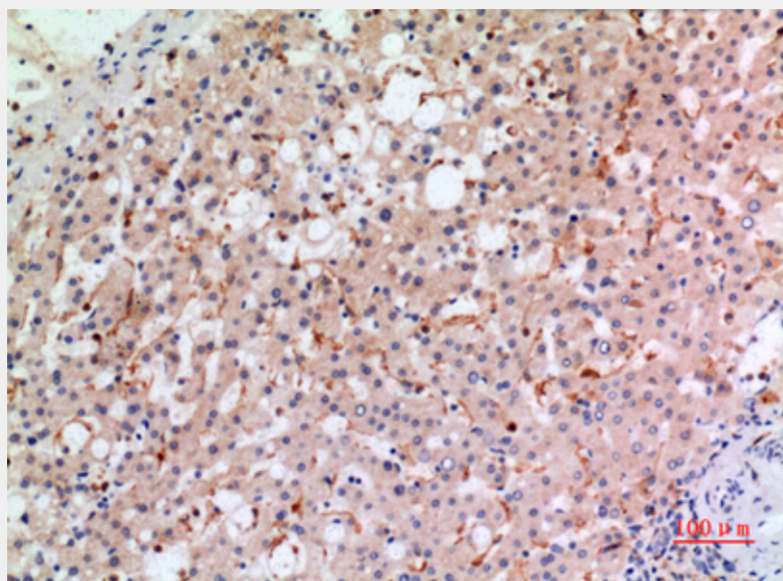
Rabbit polyclonal to gp91-phox.



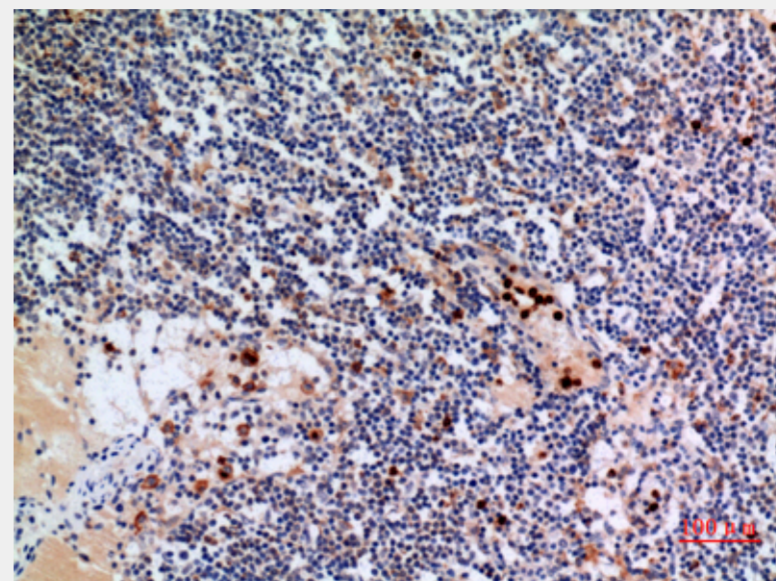
Western Blot (WB) analysis of K562 cells using gp91-phox Polyclonal Antibody.



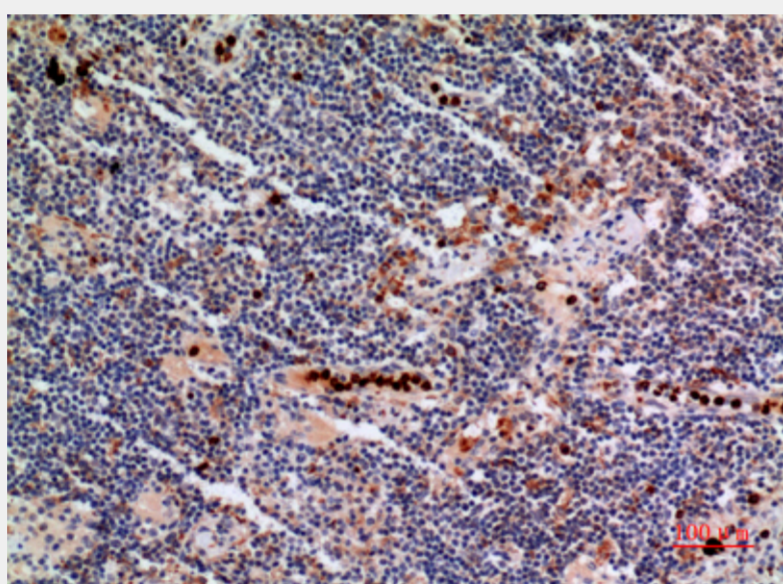
Western Blot (WB) analysis of HepG2 using gp91-phox Polyclonal Antibody.



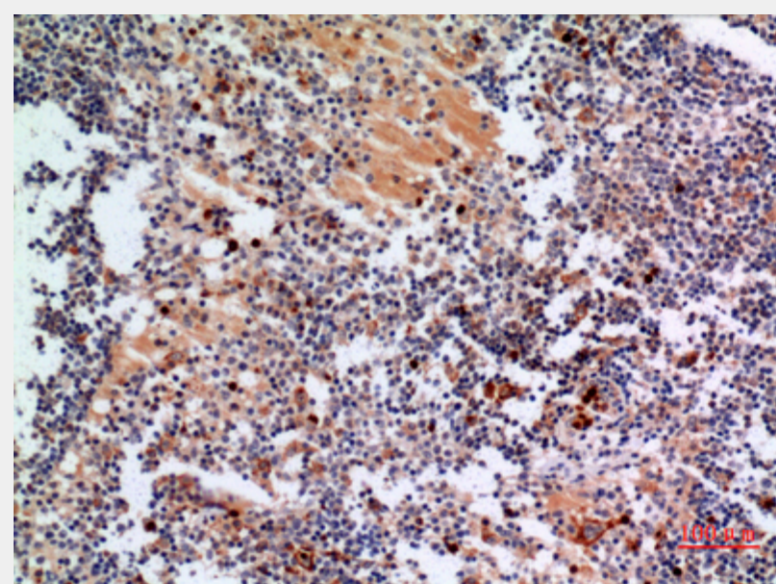
Immunohistochemistry (IHC) analysis of paraffin-embedded Human Lymph Gland, antibody was diluted at 1:100.



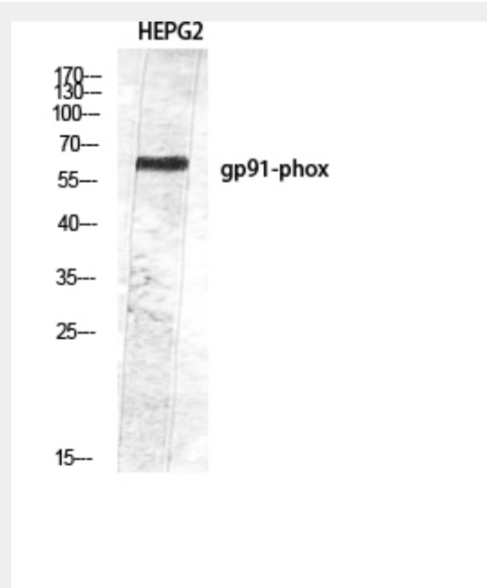
Immunohistochemistry (IHC) analysis of paraffin-embedded Human Lymph Gland, antibody was diluted at 1:100.



Immunohistochemistry (IHC) analysis of paraffin-embedded Human Lymph Gland, antibody was diluted at 1:100.



Immunohistochemistry (IHC) analysis of paraffin-embedded Human Liver, antibody was diluted at 1:100.



Immunohistochemistry (IHC) analysis of paraffin-embedded Human Liver, antibody was diluted at 1:100.

All products are for RESEARCH USE ONLY. Not for diagnostic & therapeutic purposes!