

Anti LXR α antibody

Catalog No: tcsa6506



Available Sizes

Size: 100 μ l

Size: 200 μ l



Specifications

Application:

WB, IHC-p, ELISA

Species Reactivity:

Human, Mouse, Rat

Host Species:

Rabbit

Immunogen / Amino acids:

Synthesized peptide derived from human LXR α .

Conjugation:

Unconjugated

Clonality:

Polyclonal

Isotype:

IgG

Form:

Liquid

Storage Buffer:

Liquid in PBS containing 50% glycerol, 0.5% BSA and 0.02% sodium azide.

Concentration:

1 mg/ml

Recommended Dilution:

WB 1:500-1:2000

IHC-P 1:100-300

ELISA 1:20000

Storage Instruction:

Store at -20°C, and avoid repeat freeze-thaw cycles.

Alternative Names:

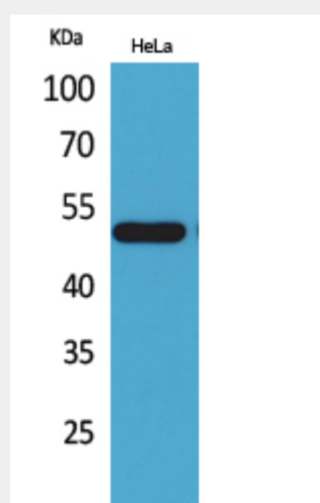
NR1H3 antibody; LXRA antibody; Oxysterols receptor LXR-alpha antibody; Liver X receptor alpha antibody; Nuclear receptor subfamily 1 group H member 3 antibody

SwissProt:

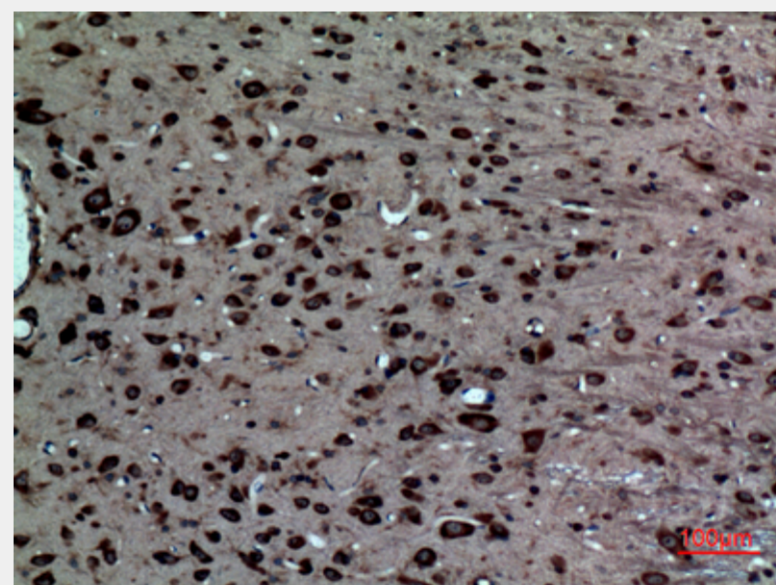
Q13133_HUMAN

Product Description

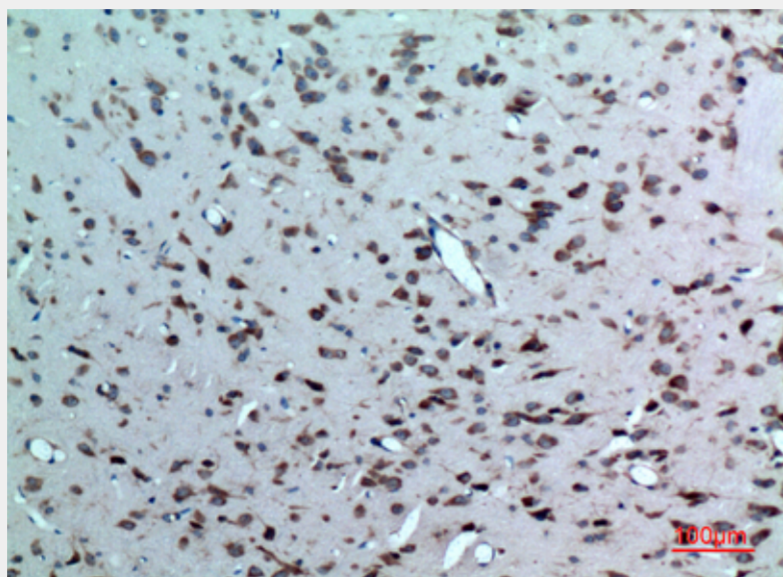
Rabbit polyclonal to LXR α .



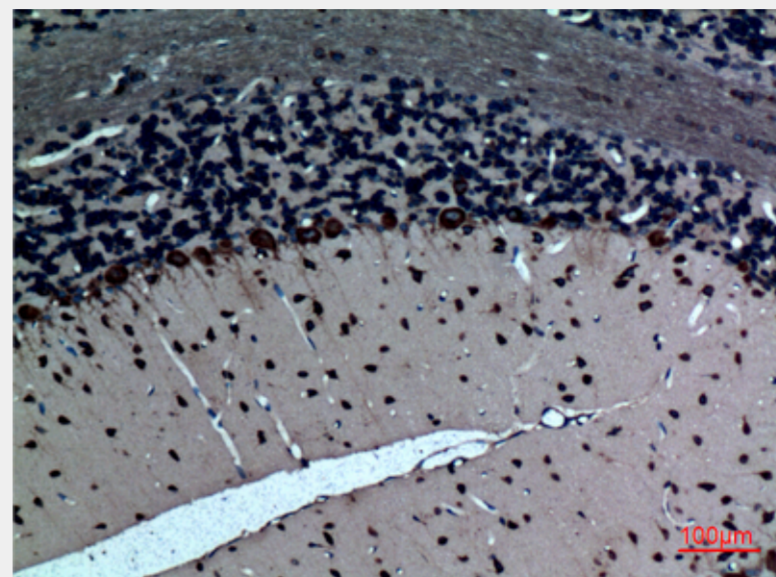
Western Blot (WB) analysis of HeLa cells using LXRalpha Polyclonal Antibody.



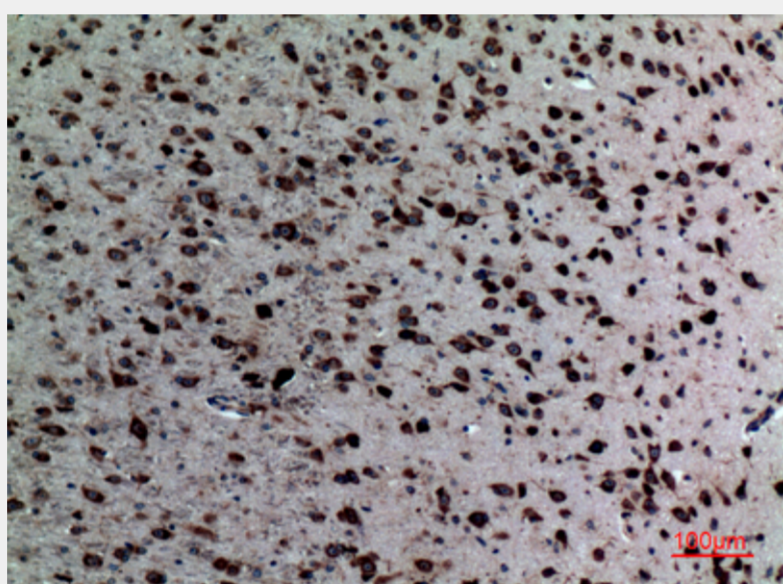
Immunohistochemistry (IHC) analysis of paraffin-embedded Rat Brain, antibody was diluted at 1:100.



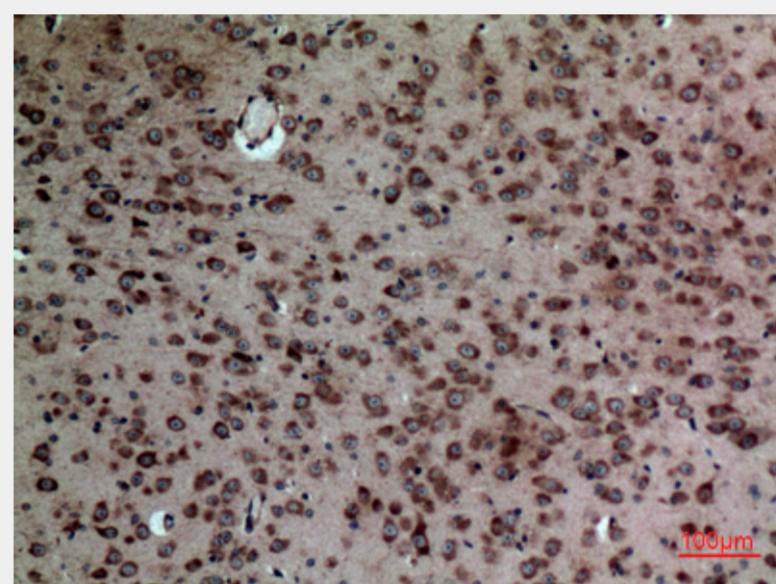
Immunohistochemistry (IHC) analysis of paraffin-embedded Rat Brain, antibody was diluted at 1:100.



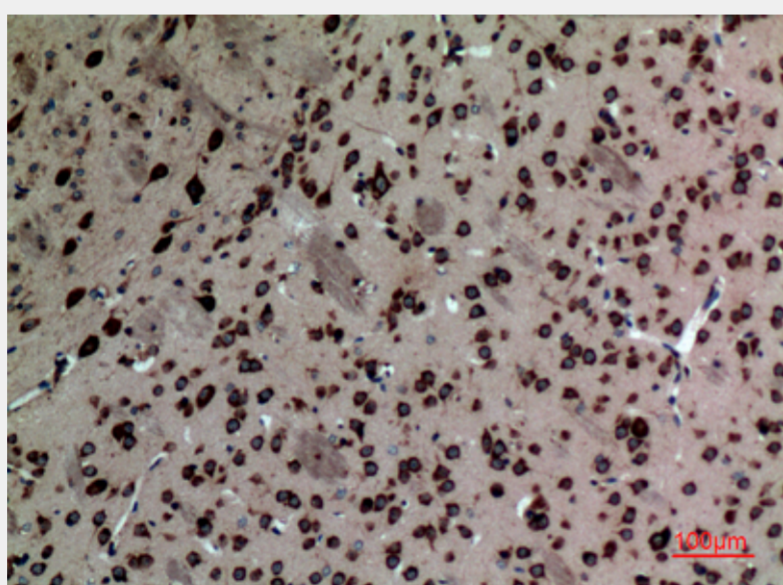
Immunohistochemistry (IHC) analysis of paraffin-embedded Rat Brain, antibody was diluted at 1:100.



Immunohistochemistry (IHC) analysis of paraffin-embedded Mouse Brain, antibody was diluted at 1:100.



Immunohistochemistry (IHC) analysis of paraffin-embedded Mouse Brain, antibody was diluted at 1:100.



Immunohistochemistry (IHC) analysis of paraffin-embedded Mouse Brain, antibody was diluted at 1:100.

All products are for RESEARCH USE ONLY. Not for diagnostic & therapeutic purposes!