

Anti MOR 1 antibody

Catalog No: tcsa4179



Available Sizes

Size: 100μl

Size: 200μl



Specifications

Application:

WB, IHC-p, ELISA

Species Reactivity:

Human, Mouse, Rat

Host Species:

Rabbit

Immunogen / Amino acids:

Synthesized peptide derived from human MOR-1 around the non-phosphorylation site of S375.

Conjugation:

Unconjugated

Clonality:

Polyclonal

Isotype:

IgG

Form:

Liquid

Storage Buffer:

Liquid in PBS containing 50% glycerol, 0.5% BSA and 0.02% sodium azide.

Concentration:

1 mg/ml

Recommended Dilution:

WB 1:500-1:2000

IHC 1:100-1:300

ELISA 1:20000

Storage Instruction:

Store at -20°C, and avoid repeat freeze-thaw cycles.

Alternative Names:

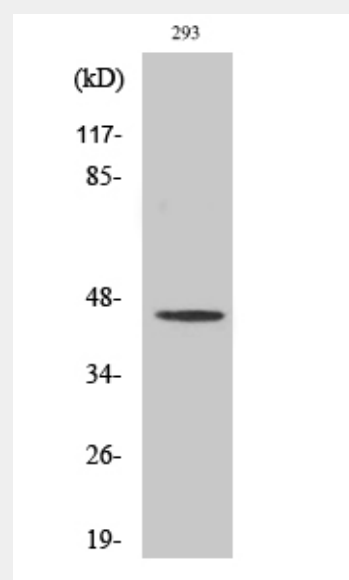
OPRM1 antibody; MOR1 antibody; Mu-type opioid receptor antibody; M-OR-1 antibody; MOR-1 antibody; Mu opiate receptor antibody; Mu opioid receptor antibody; MOP antibody; hMOP antibody

SwissProt:

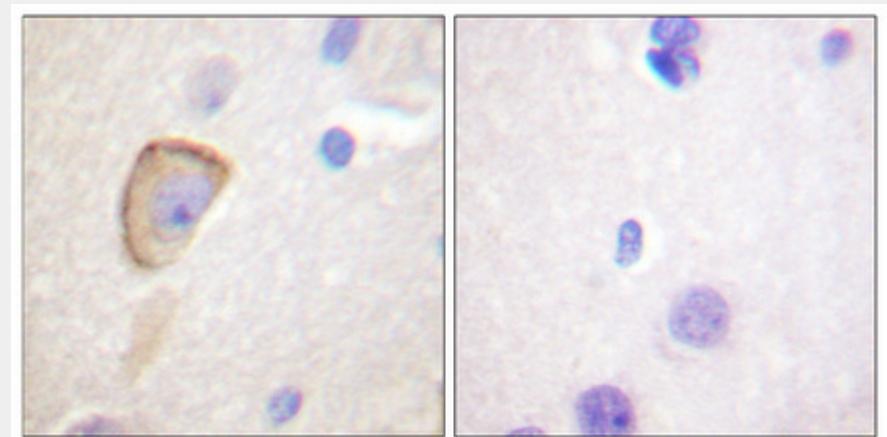
P35372_HUMAN

Product Description

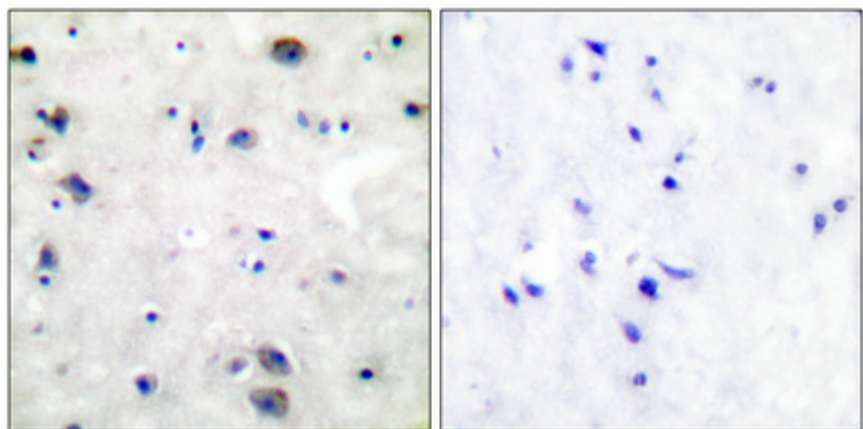
Rabbit polyclonal to MOR-1.



Western Blot (WB) analysis of specific cells using MOR-1 Polyclonal Antibody.



Immunohistochemical analysis of paraffin-embedded Human brain. Antibody was diluted at 1:100(4°,overnight). High-pressure and temperature Tris-EDTA,pH8.0 was used for antibody retrieval. Negative control (right) obtained from antibody was pre-absorbed by immunogen peptide.



Immunohistochemical analysis of paraffin-embedded Human breast cancer. Antibody was diluted at 1:100(4°,overnight). High-pressure and temperature Tris-EDTA,pH8.0 was used for antibody retrieval. Negative control (right) obtained from antibody was pre-absorbed by immunogen peptide.

All products are for RESEARCH USE ONLY. Not for diagnostic & therapeutic purposes!