

Anti LIMK 1 / 2 antibody

Catalog No: tcsa3927



Available Sizes

Size: 100μl

Size: 200μl



Specifications

Application:

WB, IHC-p, ELISA

Species Reactivity:

Human, Mouse, Rat, Monkey

Host Species:

Rabbit

Immunogen / Amino acids:

Synthesized peptide derived from human LIMK-1/2 around the non-phosphorylation site of T508/505.

Conjugation:

Unconjugated

Clonality:

Polyclonal

Isotype:

IgG

Form:

Liquid

Storage Buffer:

Liquid in PBS containing 50% glycerol, 0.5% BSA and 0.02% sodium azide.

Concentration:

1 mg/ml

Recommended Dilution:

WB 1:500-1:2000

IHC 1:100-1:300

ELISA 1:40000

Storage Instruction:

Store at -20°C, and avoid repeat freeze-thaw cycles.

Alternative Names:

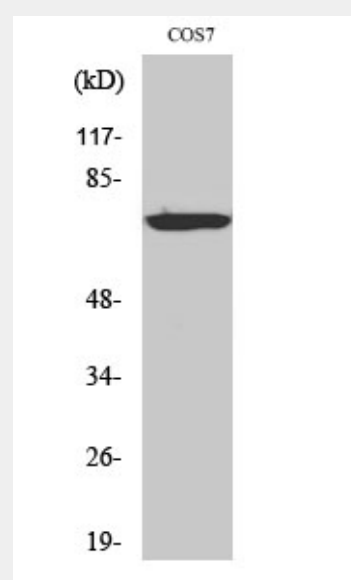
LIMK1 antibody; LIMK antibody; LIM domain kinase 1 antibody; LIMK-1 antibody

SwissProt:

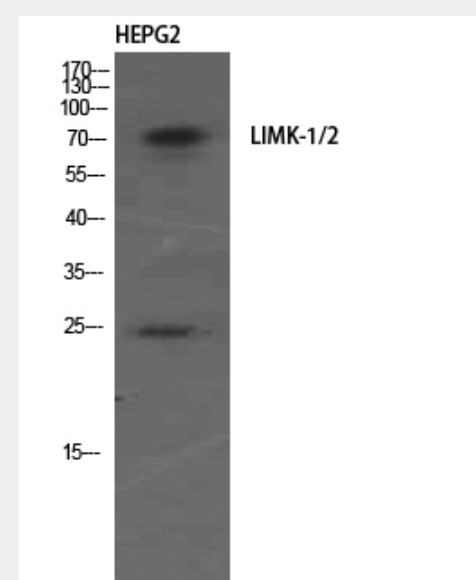
P53667_HUMAN

Product Description

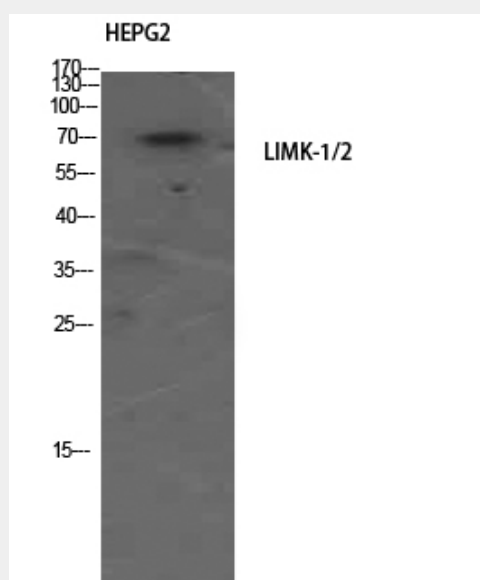
Rabbit polyclonal to LIMK-1/2.



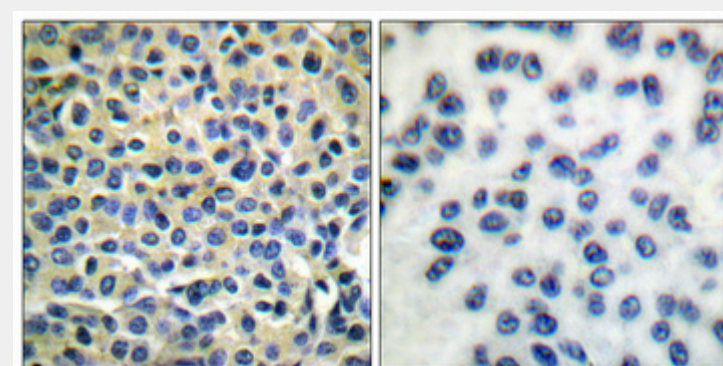
Western Blot (WB) analysis of COS7 cells using Anti-LIMK-1/2 Polyclonal Antibody.



Western Blot (WB) analysis of HepG2 using Anti-LIMK-1/2 Polyclonal Antibody.



Western Blot (WB) analysis of HepG2 using Anti-LIMK-1/2 Polyclonal Antibody.



Immunohistochemical analysis of paraffin-embedded Human breast cancer using Anti-LIMK-1/2 Polyclonal Antibody. Antibody was diluted at 1:100(4°, overnight). High-pressure and temperature Tris-EDTA, pH 8.0 was used for antibody retrieval. Negative control (right) obtained from antibody was pre-absorbed by immunogen peptide.

All products are for RESEARCH USE ONLY. Not for diagnostic & therapeutic purposes!