

# Anti Cox 1 antibody

Catalog No: tcsa2431



## Available Sizes

**Size:** 100μl

**Size:** 200μl



## Specifications

**Application:**

WB, IHC-p, ELISA

**Species Reactivity:**

Human

**Host Species:**

Rabbit

**Immunogen / Amino acids:**

Synthesized peptide derived from human Cox-1

**Conjugation:**

Unconjugated

**Clonality:**

Polyclonal

**Isotype:**

IgG

**Form:**

Liquid

**Storage Buffer:**

Liquid in PBS containing 50% glycerol, 0.5% BSA and 0.02% sodium azide.

**Concentration:**

1 mg/ml

#### Recommended Dilution:

WB 1:500-1:2000

IHC 1:100-1:300

ELISA 1:40000

#### Storage Instruction:

Store at -20°C, and avoid repeat freeze-thaw cycles.

#### Alternative Names:

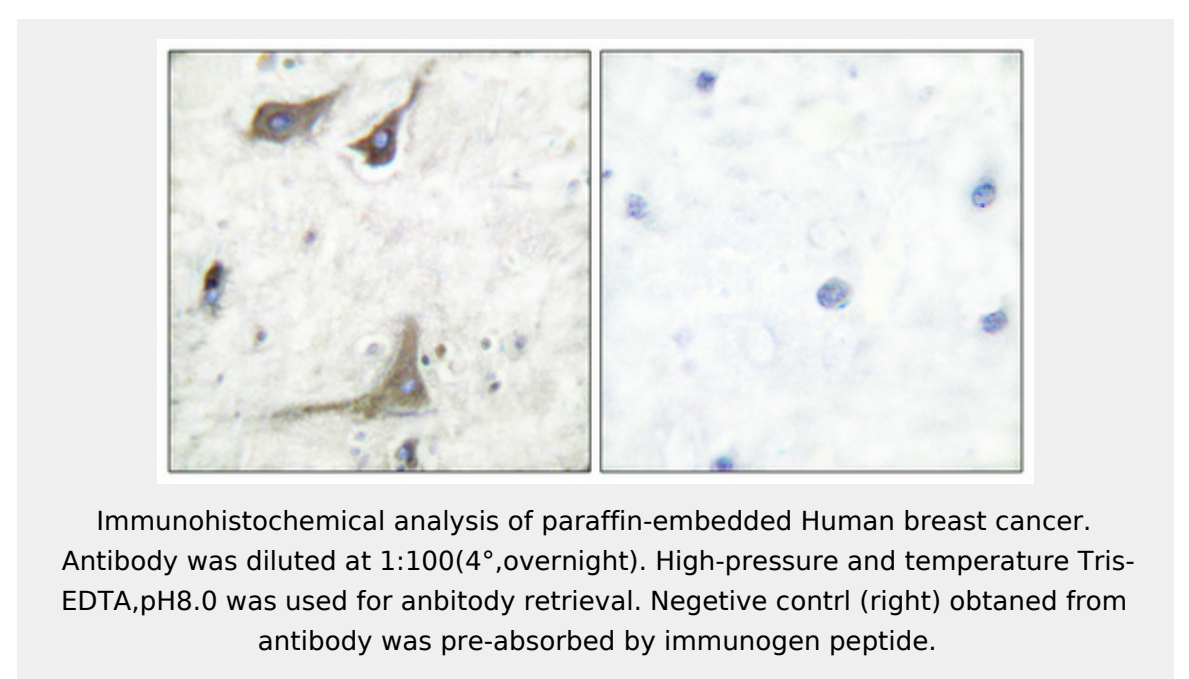
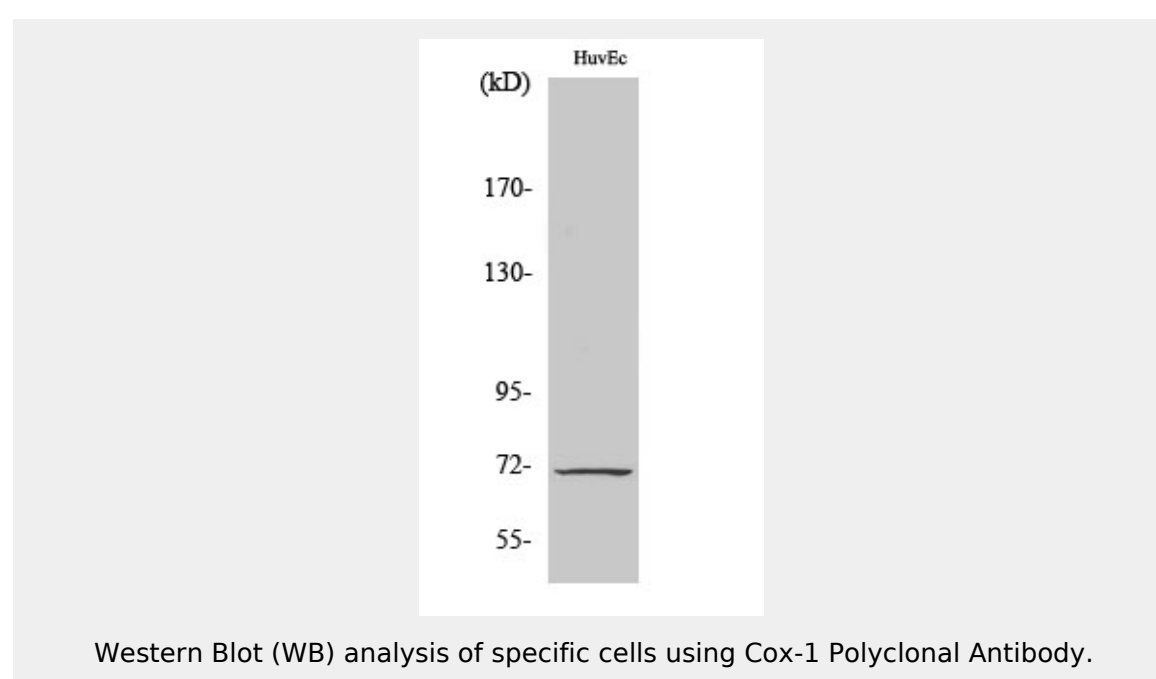
PTGS1 antibody; COX1 antibody; Prostaglandin G/H synthase 1 antibody; Cyclooxygenase-1 antibody; COX-1 antibody; Prostaglandin H2 synthase 1 antibody; PGH synthase 1 antibody; PGHS-1 antibody; PHS 1 antibody; Prostaglandin-endop

#### SwissProt:

P23219\_HUMAN

### Product Description

Rabbit polyclonal to Cox-1.



All products are for RESEARCH USE ONLY. Not for diagnostic & therapeutic purposes!