

# Anti CLK1 antibody

Catalog No: tcsa2335



## Available Sizes

**Size:** 100μl

**Size:** 200μl



## Specifications

**Application:**

WB, IHC-p, IF, ELISA

**Species Reactivity:**

Human, Mouse

**Host Species:**

Rabbit

**Immunogen / Amino acids:**

Synthesized peptide derived from human CLK1

**Conjugation:**

Unconjugated

**Clonality:**

Polyclonal

**Isotype:**

IgG

**Form:**

Liquid

**Storage Buffer:**

Liquid in PBS containing 50% glycerol, 0.5% BSA and 0.02% sodium azide.

**Concentration:**

1 mg/ml

**Recommended Dilution:**

WB 1:500-1:2000

IHC 1:100-1:300

IF 1:200-1:1000

ELISA 1:20000

**Storage Instruction:**

Store at -20°C, and avoid repeat freeze-thaw cycles.

**Alternative Names:**

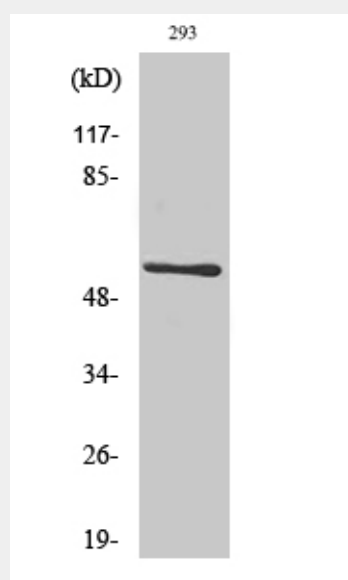
CLK1 antibody; CLK antibody; Dual specificity protein kinase CLK1 antibody; CDC-like kinase 1 antibody

**SwissProt:**

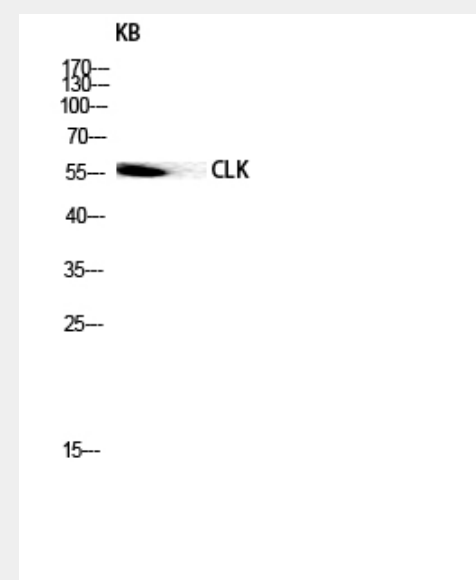
P49759\_HUMAN

**Product Description**

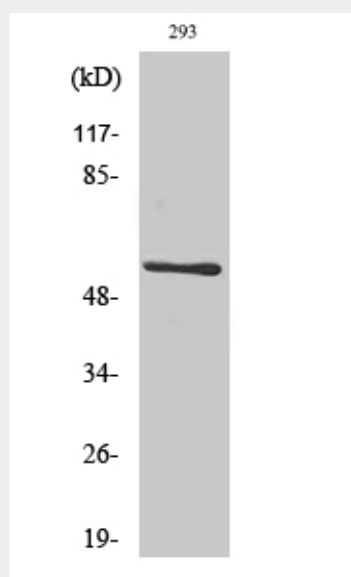
Rabbit polyclonal to CLK1.



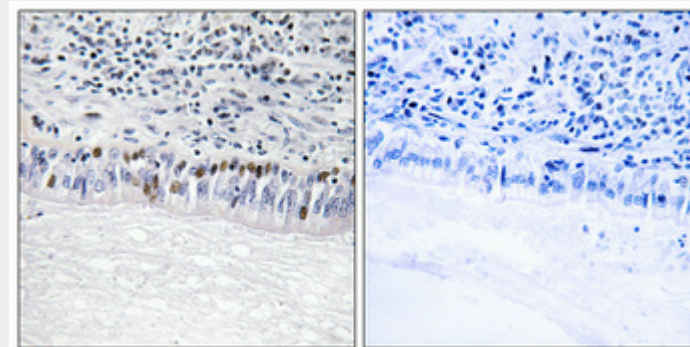
Western Blot (WB) analysis of 293 cells using Anti-CLK1 Polyclonal Antibody.



Western Blot (WB) analysis of KB lysis using Anti-CLK1 antibody.



Western Blot (WB) analysis of 293 cells using Anti-CLK1 Polyclonal Antibody.



Immunohistochemical analysis of paraffin-embedded Human lung cancer using Anti-CLK1 Polyclonal Antibody. Antibody was diluted at 1:100(4°,overnight). High-pressure and temperature Tris-EDTA,pH8.0 was used for antibody retrieval. Negative control (right) obtained from antibody was pre-absorbed by immunogen peptide.

All products are for RESEARCH USE ONLY. Not for diagnostic & therapeutic purposes!