

# Anti Phospho LATS1 / 2 (T1079 / 1041) antibody

Catalog No: tcsa1207



## Available Sizes

**Size:** 100μl

**Size:** 200μl



## Specifications

**Application:**

IHC-p, ELISA

**Species Reactivity:**

Human, Mouse

**Host Species:**

Rabbit

**Immunogen / Amino acids:**

Synthesized peptide derived from human LATS1/2 around the phosphorylation site of T1079/1041.

**Conjugation:**

Unconjugated

**Clonality:**

Polyclonal

**Isotype:**

IgG

**Form:**

Liquid

**Storage Buffer:**

Liquid in PBS containing 50% glycerol, 0.5% BSA and 0.02% sodium azide.

**Concentration:**

1 mg/ml

**Recommended Dilution:**

IHC 1:100-1:300

ELISA 1:20000

**Storage Instruction:**

Store at -20°C, and avoid repeat freeze-thaw cycles.

**Alternative Names:**

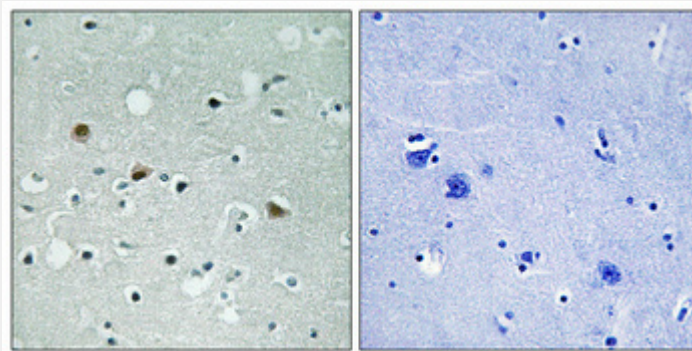
LATS1 antibody; WARTS antibody; Serine/threonine-protein kinase LATS1 antibody; Large tumor suppressor homolog 1 antibody; WARTS protein kinase antibody; h-warts antibody; Phospho-LATS1/2 (T1079/1041) antibody

**SwissProt:**

O95835\_HUMAN

**Product Description**

Rabbit polyclonal to Phospho-LATS1/2 (T1079/1041).



Immunohistochemical analysis of paraffin-embedded Human brain. Antibody was diluted at 1:100(4°,overnight). High-pressure and temperature Tris-EDTA,pH8.0 was used for antibody retrieval. Negative control (right) obtained from antibody was pre-absorbed by immunogen peptide.

All products are for RESEARCH USE ONLY. Not for diagnostic & therapeutic purposes!