

Anti Di Methyl p53 (K370) antibody

Catalog No: tcsa116



Available Sizes

Size: 100μl

Size: 200μl



Specifications

Application:

WB, IHC-p, ELISA

Species Reactivity:

Human

Host Species:

Rabbit

Immunogen / Amino acids:

Synthesized peptide derived from human p53.

Conjugation:

Unconjugated

Clonality:

Polyclonal

Isotype:

IgG

Form:

Liquid

Storage Buffer:

Liquid in PBS containing 50% glycerol, 0.5% BSA and 0.02% sodium azide.

Concentration:

1 mg/ml

Recommended Dilution:

WB 1:500-1:2000

IHC-P 1:100-300

ELISA 1:20000

Storage Instruction:

Store at -20°C, and avoid repeat freeze-thaw cycles.

Alternative Names:

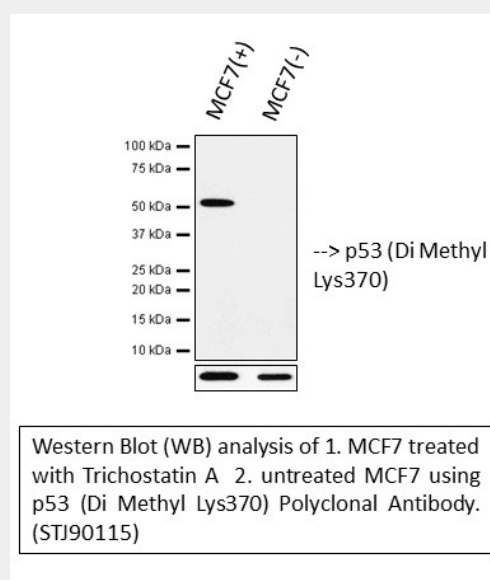
TP53 antibody; P53 antibody; Cellular tumor antigen p53 antibody; Antigen NY-CO-13 antibody; Phosphoprotein p53 antibody; Tumor suppressor p53 antibody; Di-Methyl-p53 (K370) antibody

SwissProt:

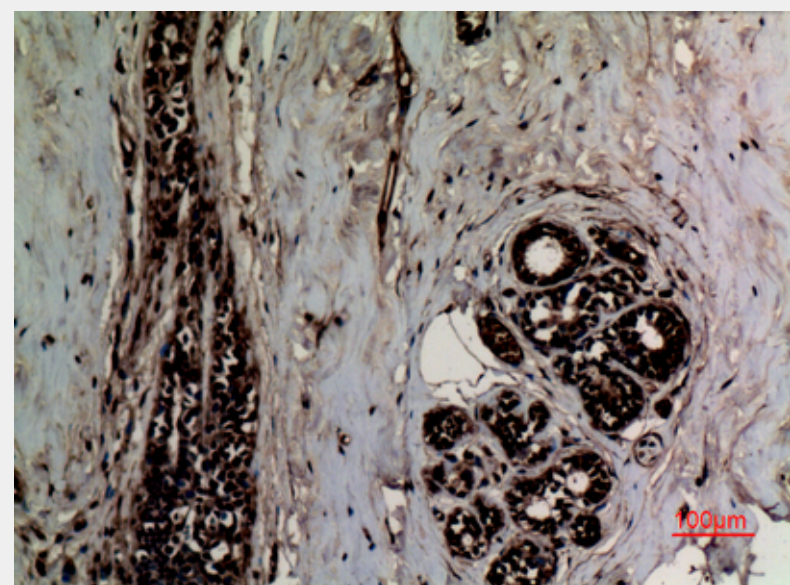
P04637_HUMAN

Product Description

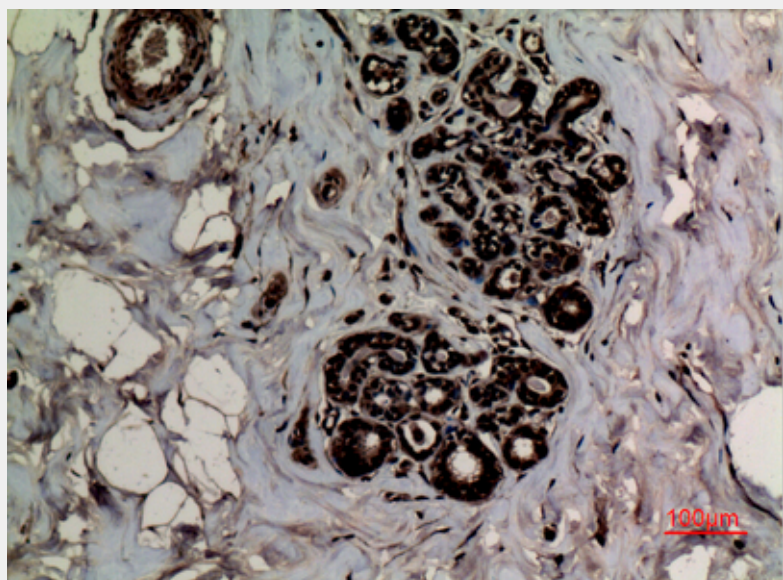
p53 is a protein encoded by the TP53 gene which is approximately 43,6 kDa. p53 is localised to the cytoplasm, nucleus and endoplasmic reticulum. It is involved in RET signalling, CDK-mediated phosphorylation and removal of Cdc6, glioma and apoptotic pathways. It is a tumor suppressor protein containing transcriptional activation, DNA binding, and oligomerization domains. It responds to diverse cellular stresses to regulate expression of target genes, thereby inducing cell cycle arrest and changes in metabolism. p53 is expressed ubiquitously. Mutations in the TP53 gene may result in Li-Fraumeni syndrome and choroid plexus papilloma. STJ90115 was affinity-purified from rabbit antiserum by affinity-chromatography using epitope-specific immunogen. This polyclonal antibody detects endogenous levels of p53 (K370).



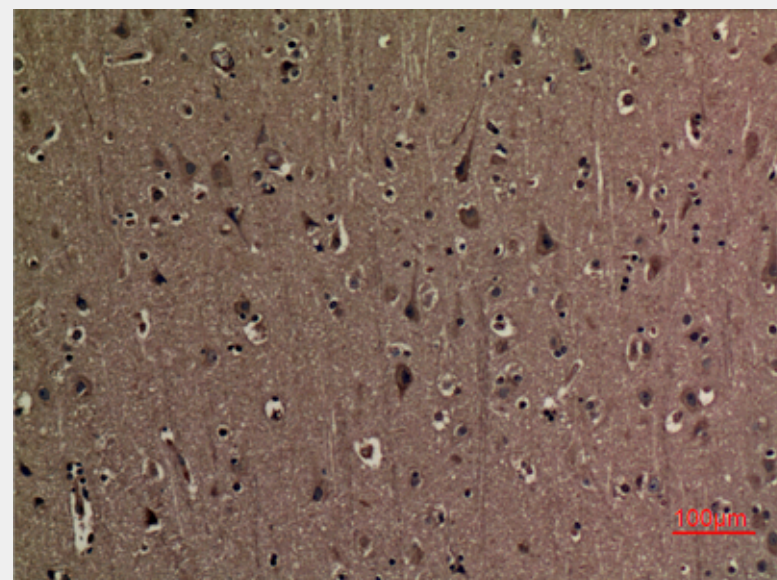
Western blot (WB) analysis of p53 (Di Methyl Lys370) Polyclonal Antibody.



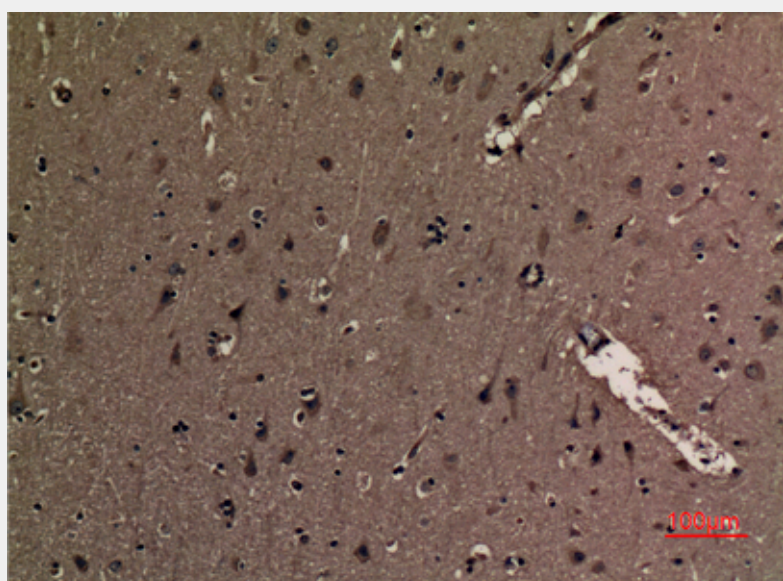
Immunohistochemistry (IHC) analysis of paraffin-embedded Human Breast, antibody was diluted at 1:100.



Immunohistochemistry (IHC) analysis of paraffin-embedded Human Breast, antibody was diluted at 1:100.



Immunohistochemistry (IHC) analysis of paraffin-embedded Human Brain, antibody was diluted at 1:100.



Immunohistochemistry (IHC) analysis of paraffin-embedded Human Brain, antibody was diluted at 1:100.

All products are for RESEARCH USE ONLY. Not for diagnostic & therapeutic purposes!