

Tau Polyclonal Antibody

Catalog No: tcea627



Available Sizes

Size: 20ul

Size: 60ul

Size: 120ul

Size: 200ul



Specifications

Application:

ELISA, WB

Research Area:

Cancer, Neuroscience, Signal transduction

Species Reactivity:

Human, Mouse, Rat

Host Species:

Rabbit

Immunogen / Amino acids:

Recombinant protein of human MAPT

Clonality:

Polyclone

Isotype:

IgG

Form:

Liquid

Storage Buffer:

PBS with 0.05% sodium azide, 50% glycerol, pH7.3

Concentration:

0.3mg/ml

Recommended Dilution:

WB(1:200-1:1000)

Alternative Names:

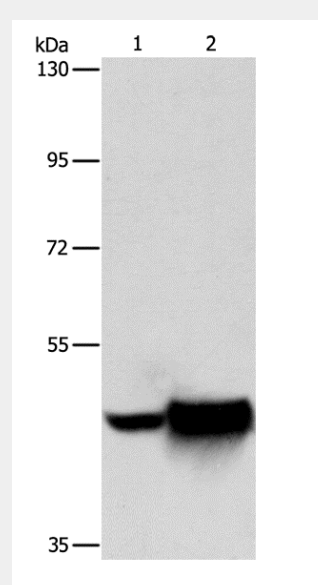
AI413597,AW045860,DDPAC,FLJ31424,FTDP 17,G protein beta1/gamma2 subunit interacting factor 1,MAPT,MAPTL,MGC134287,MGC138549,MGC156663,Microtubule associated protein tau,Microtubule associated protein tau isoform 4,Microtubule-associated protein tau,MSTD,Mtapt,MTBT1,MTBT2,Neurofibrillary tangle protein,Paired helical filament tau,Paired helical filament-tau,PHF tau,PHF-tau,PPND,PPP1R103,Protein phosphatase 1,regulatory subunit 103,pTau,RNPTAU,TAU,TAU,Tauopathy and respiratory failure,included.

SwissProt:

P10636

Product Description

This gene encodes the microtubule-associated protein tau (MAPT) whose transcript undergoes complex, regulated alternative splicing, giving rise to several mRNA species. MAPT transcripts are differentially expressed in the nervous system, depending on stage of neuronal maturation and neuron type. MAPT gene mutations have been associated with several neurodegenerative disorders such as Alzheimer's disease, Pick's disease, frontotemporal dementia, cortico-basal degeneration and progressive supranuclear palsy.



Western Blot analysis of A172 and hela cell using Tau Polyclonal Antibody at dilution of 1:150

All products are for RESEARCH USE ONLY. Not for diagnostic & therapeutic purposes!