

APC/CY7 Linked Anti ATPase, Na⁺/K⁺ Transporting Alpha 1 Polypeptide (ATP1a1) Monoclonal Antibody

Catalog No: tcua8211APCCY7



Available Sizes

Size: 100ug



Specifications

Application:

Loading Control of WB.

Species Reactivity:

Mouse

Host Species:

Mouse

Conjugation:

APC/CY7

Concentration:

500ug/ml

Storage Instruction:

Avoid repeated freeze/thaw cycles. Store at 4 °C for frequent use. Aliquot and store at -20 °C for 12 months.

Alternative Names:

Sodium pump subunit alpha-1; Na(+)/K(+) ATPase alpha-1 subunit; Sodium/potassium-transporting ATPase subunit alpha-1

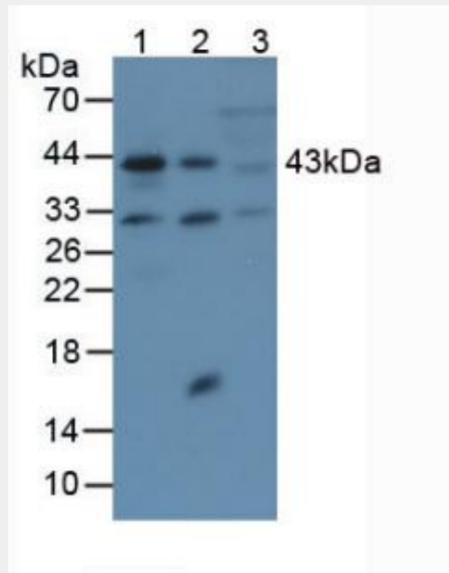


Figure. Western Blot; Sample: Lane1: Mouse Brain Tissue; Lane2: Mouse Heart Tissue; Lane3: Mouse Skeletal Muscle Tissue.)

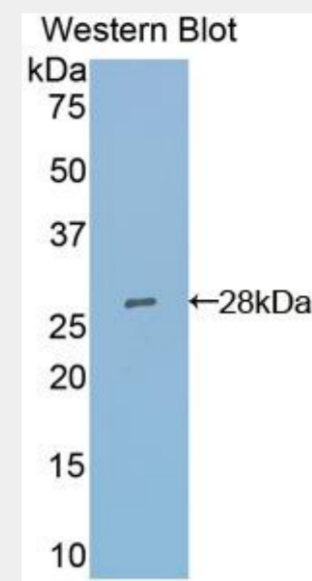


Figure. Western Blot; Sample: Recombinant ACTa2, Human.)

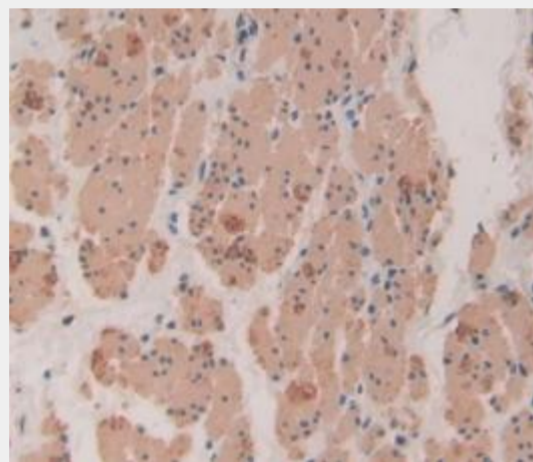


Figure. DAB staining on IHC-P;
Samples: Human esophagus Tissue.)

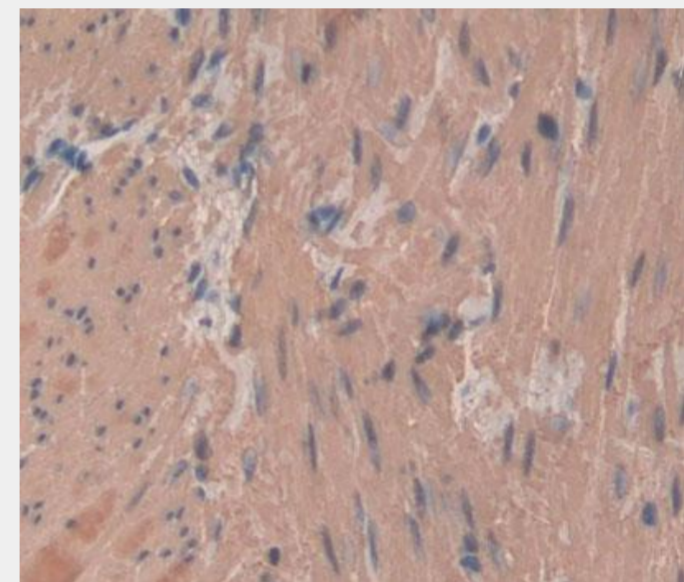


Figure. DAB staining on IHC-P;
Samples: Human Rectum Cancer Tissue.)

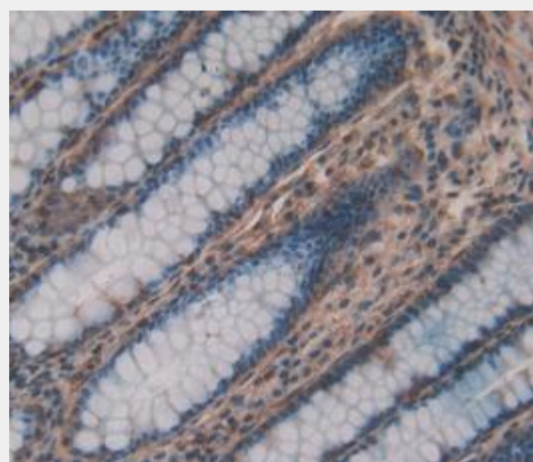
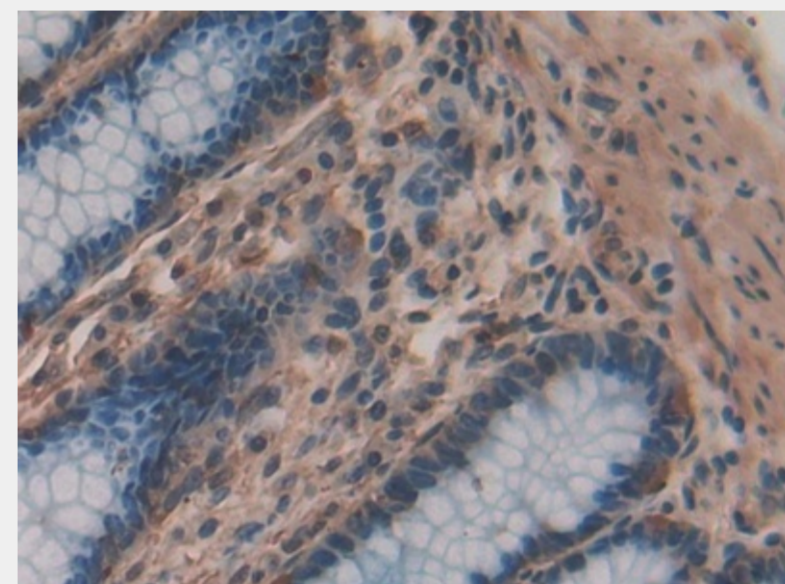


Figure. DAB staining on IHC-P;
Samples: Human Rectum Tissue.)



DAB staining on IHC-P;
Samples: Human Rectum Tissue)

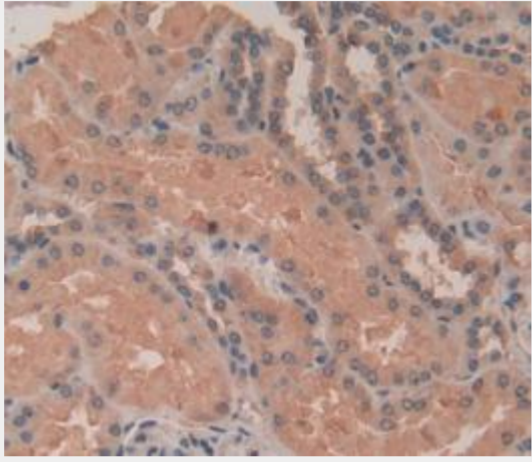


Figure. DAB staining on IHC-P; Samples: Human Kidney Tissue.)

All products are for RESEARCH USE ONLY. Not for diagnostic & therapeutic purposes!