

APC/CY7 Linked Polyclonal Antibody to Insulin Like Growth Factor Binding Protein 1 (IGFBP1)

Catalog No: tcua7823APCCY7



Available Sizes

Size: 100ug



Specifications

Application:

WB; IHC; ICC; IP.

Species Reactivity:

Rabbit

Host Species:

Rabbit

Immunogen / Amino acids:

IGFBP1 (Asp159~Pro249)

Conjugation:

APC/CY7

Clonality:

Polyclone

Concentration:

200ug/ml

Storage Instruction:

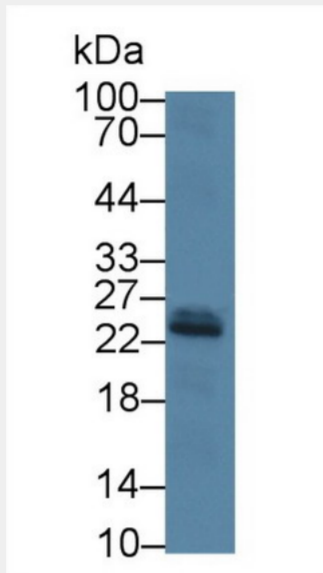
Avoid repeated freeze/thaw cycles. Store at 4 °C for frequent use. Aliquot and store at -20 °C for 12 months.

Alternative Names:

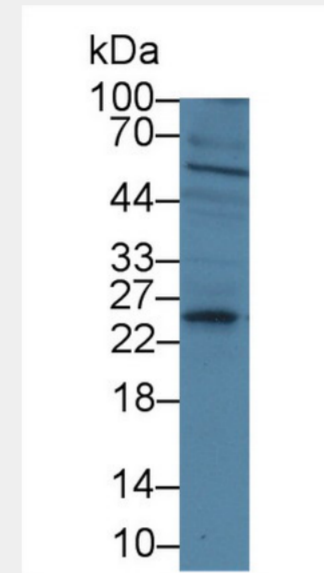
IBP1; AFBP; IGF-BP25; PP12; Placental Protein 12; Amniotic Fluid Binding Protein; Alpha-Pregnancy-Associated Endometrial Globulin; Growth Hormone Independent-Binding Protein

SwissProt:

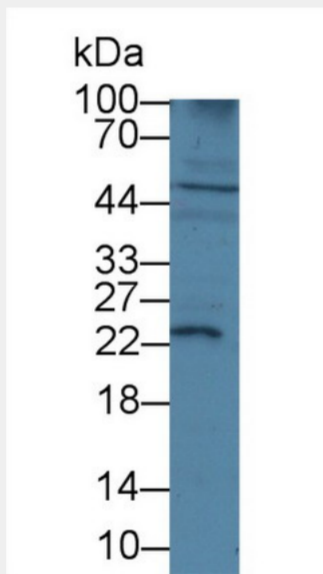
P08833



Western Blot; Sample: Mouse Liver lysate;
Primary Ab: 3µg/mL Rabbit Anti-Human IGF1 Ab
Second Ab: 0.2µg/mL HRP-Linked Caprine Anti-Rabbit IgG Polyclonal Antibody
(Catalog: SAA544Rb19)



Western Blot; Sample: Mouse Cerebrum lysate;
Primary Ab: 3µg/ml Rabbit Anti-Human IGF1 Antibody
Second Ab: 0.2µg/mL HRP-Linked Caprine Anti-Rabbit IgG Polyclonal Antibody
Catalog: SAA544Rb19)



Western Blot; Sample: Rat Cerebrum lysate;
Primary Ab: 3µg/ml Rabbit Anti-Human IGF1 Antibody
Second Ab: 0.2µg/mL HRP-Linked Caprine Anti-Rabbit IgG Polyclonal Antibody
Catalog: SAA544Rb19)

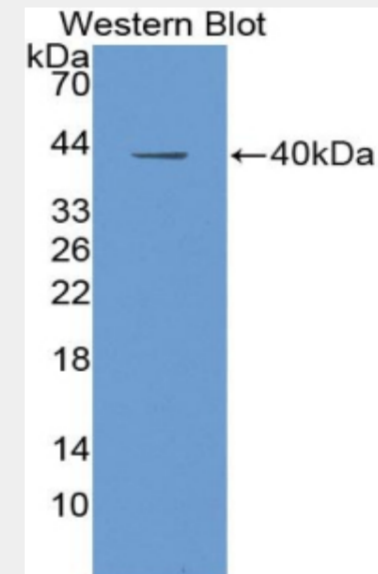
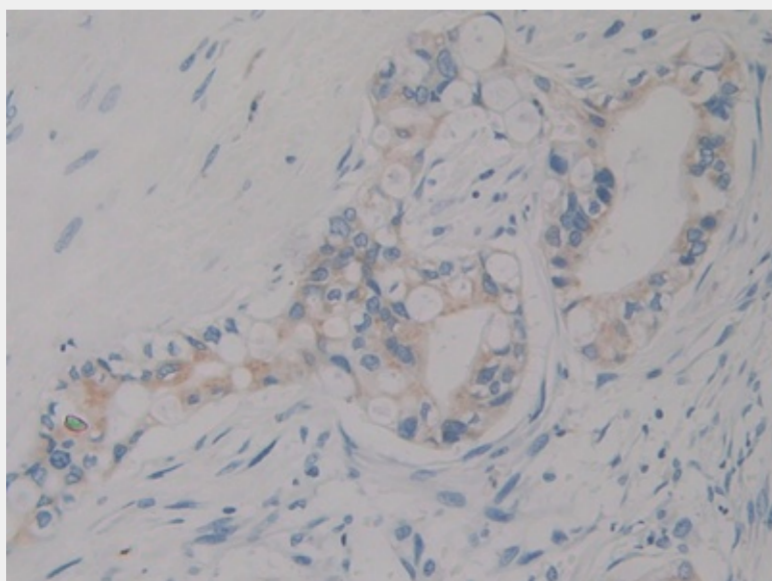
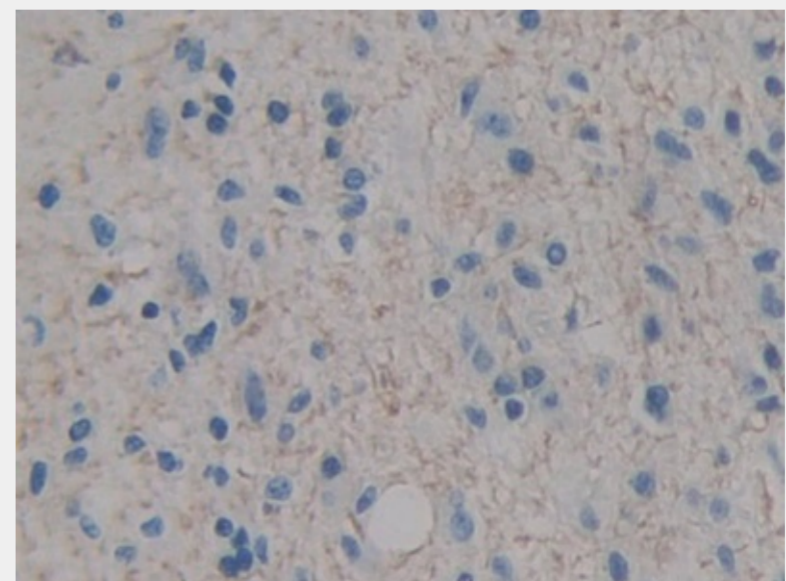


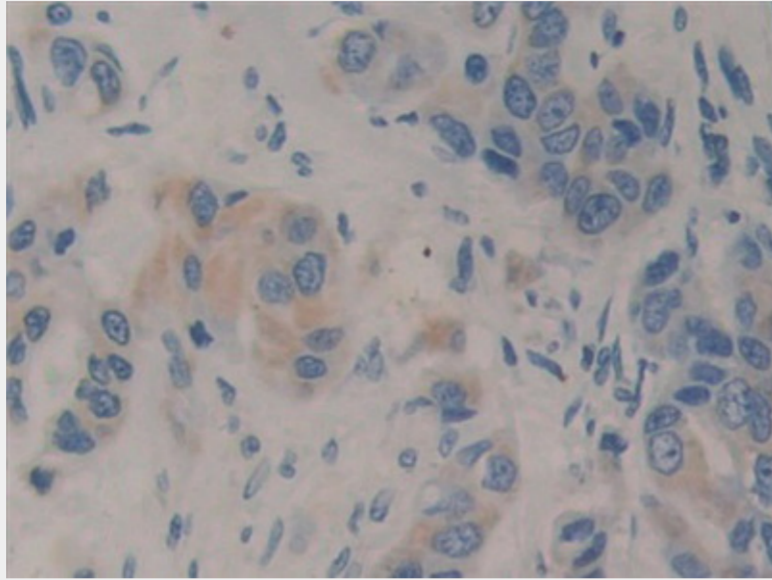
Figure. Western Blot; Sample: Recombinant protein.)



DAB staining on IHC-P;
Samples: Human Bile duct cancer Tissue)



DAB staining on IHC-P;
Samples: Human Glioma Tissue)



Used in DAB staining on formalin fixed paraffin-embedded Liver tissue)

All products are for RESEARCH USE ONLY. Not for diagnostic & therapeutic purposes!