

# APC/CY7 Linked Polyclonal Antibody to Matrix Metalloproteinase 15 (MMP15)

Catalog No: tcua7100APCCY7



## Available Sizes

---

**Size:** 100ug

---



## Specifications

---

**Application:**

WB; IHC; ICC; IP.

---

**Species Reactivity:**

Rabbit

---

**Host Species:**

Rabbit

---

**Immunogen / Amino acids:**

MMP15 (Phe280~Asp497)

---

**Conjugation:**

APC/CY7

---

**Clonality:**

Polyclone

---

**Concentration:**

200ug/ml

---

**Storage Instruction:**

Avoid repeated freeze/thaw cycles. Store at 4 °C for frequent use. Aliquot and store at -20 °C for 12 months.

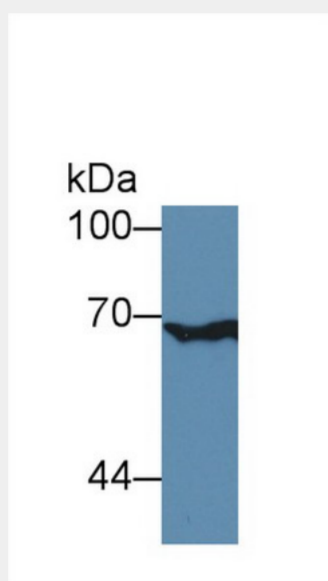
---

**Alternative Names:**

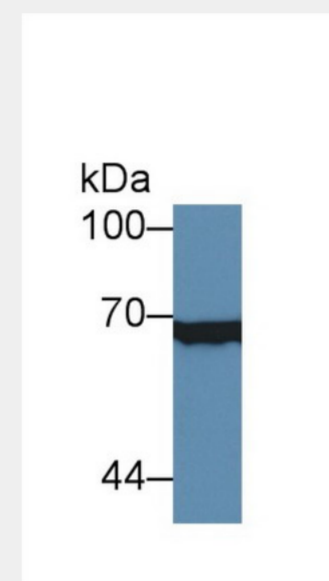
SMCP-2; MTMMP2; MT2-MMP; Membrane-Inserted; Membrane-type matrix metalloproteinase 2; Membrane-type-2 matrix metalloproteinase

---

**SwissProt:**  
P51511



Western Blot; Sample: Human A549 cell lysate; <br/>Primary Ab: 3µg/ml Rabbit Anti-Mouse XRCC6 Antibody<br/>Second Ab: 0.2µg/mL HRP-Linked Caprine Anti-Rabbit IgG Polyclonal Antibody<br/>(Catalog: SAA544Rb19)



Western Blot; Sample: Human HeLa cell lysate; <br/>Primary Ab: 3µg/ml Rabbit Anti-Mouse XRCC6 Antibody<br/>Second Ab: 0.2µg/mL HRP-Linked Caprine Anti-Rabbit IgG Polyclonal Antibody<br/>Catalog: SAA544Rb19)

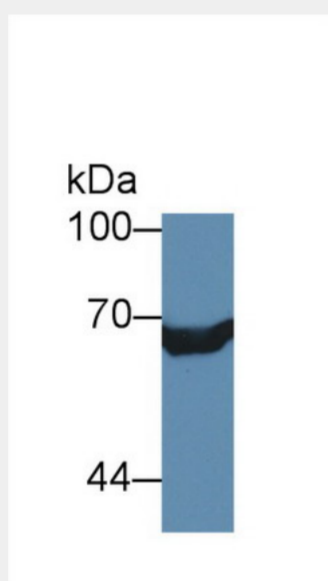
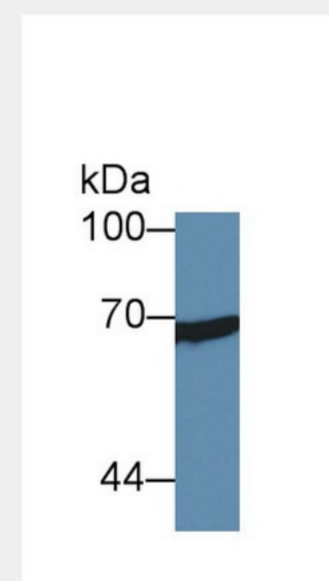


Figure. Western Blot; Sample: Recombinant protein.)



Western Blot; Sample: Human MCF7 cell lysate; <br/>Primary Ab: 3µg/ml Rabbit Anti-Mouse XRCC6 Antibody<br/>Second Ab: 0.2µg/mL HRP-Linked Caprine Anti-Rabbit IgG Polyclonal Antibody<br/>Catalog: SAA544Rb19)

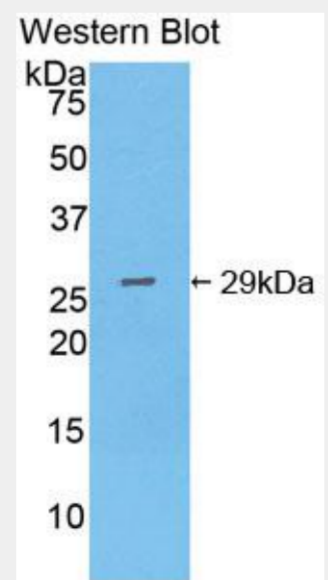
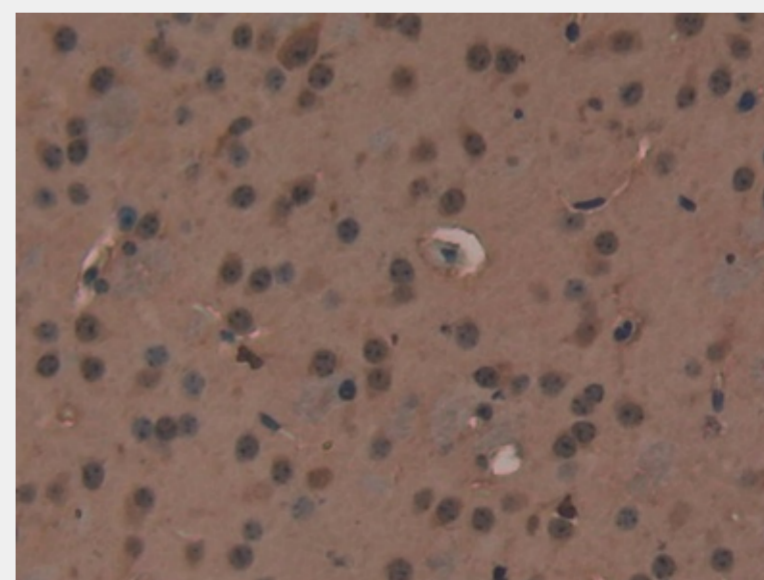
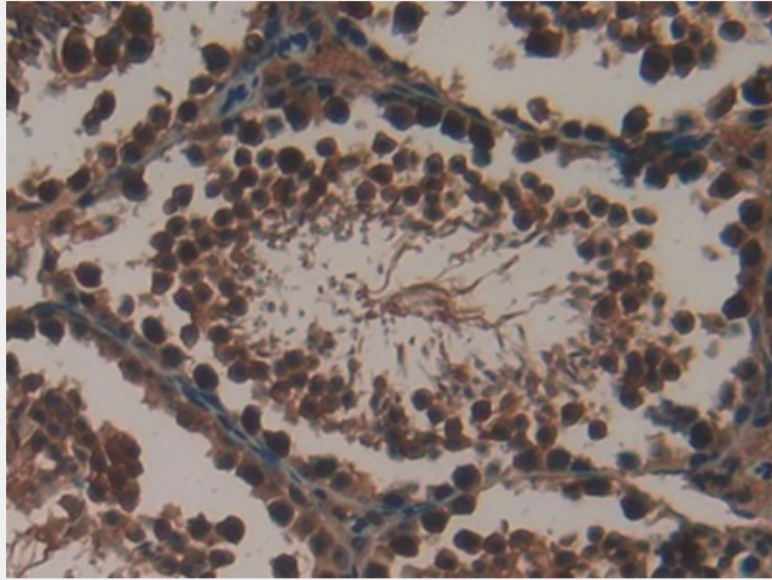


Figure. Western Blot; Sample: Recombinant protein.)



DAB staining on IHC-P;  
Samples: Mouse Heart Tissue)



Used in DAB staining on formalin fixed paraffin- embedded heart tissue)

All products are for RESEARCH USE ONLY. Not for diagnostic & therapeutic purposes!