

APC/CY7 Linked Polyclonal Antibody to N Terminal Pro Atrial Natriuretic Peptide (NT ProANP)

Catalog No: tcua6809APCCY7



Available Sizes

Size: 100ug



Specifications

Application:

WB; IHC; ICC; IP.

Species Reactivity:

Rabbit

Host Species:

Rabbit

Immunogen / Amino acids:

NT-ProANP (Asn25~Arg122)

Conjugation:

APC/CY7

Clonality:

Polyclone

Concentration:

200ug/ml

Storage Instruction:

Avoid repeated freeze/thaw cycles. Store at 4 °C for frequent use. Aliquot and store at -20 °C for 12 months.

Alternative Names:

NT-Pro-ANP; N-ANP

SwissProt:

P05125

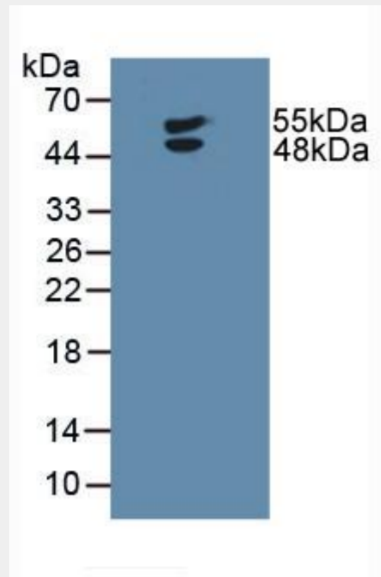
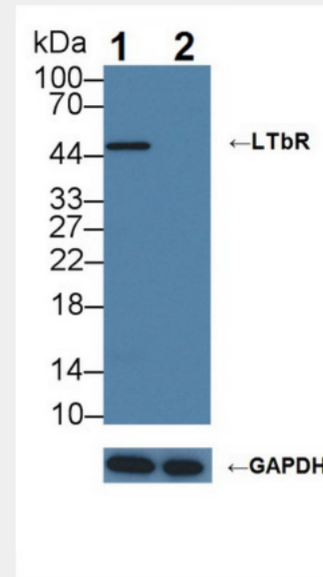


Figure. Western Blot; Sample: Human U-87MG Cells.)



Knockout Varification: Lane 1: Wild-type U87MG cell lysate; Lane 2: LTbR knockout U87MG cell lysate; Predicted MW: 45,47kDa Observed MW: 47kDa Primary Ab: 3µg/ml Rabbit Anti-Human LTbR Antibody Second Ab: 0.2µg/mL HRP-Linked Caprine Anti-Rabbit IgG Polyclonal Antibody Catalog: SAA544Rb19)

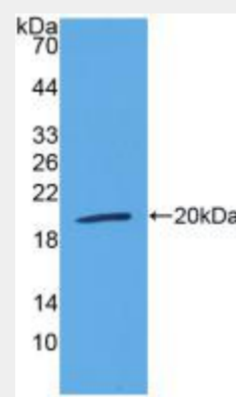


Figure. Western Blot; Sample: Recombinant LTbR, Human.)

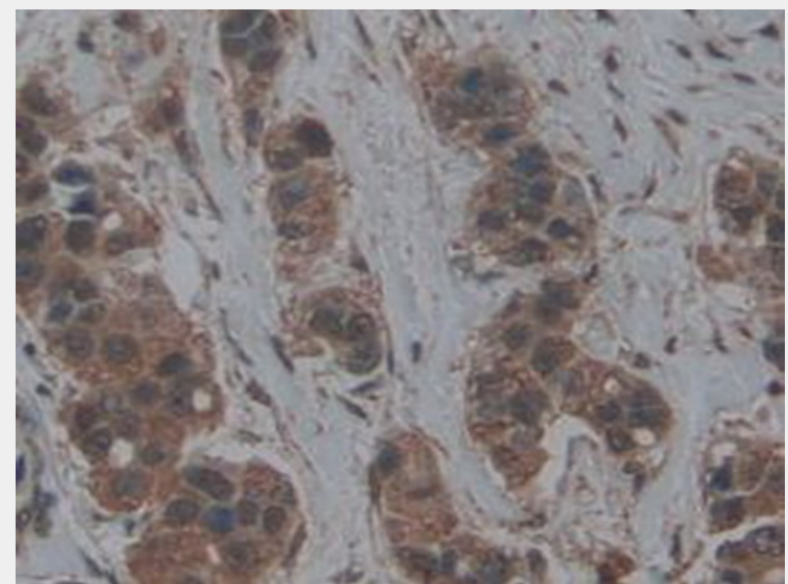


Figure. DAB staining on IHC-P;
Samples: Human Breast Cancer Tissue.)

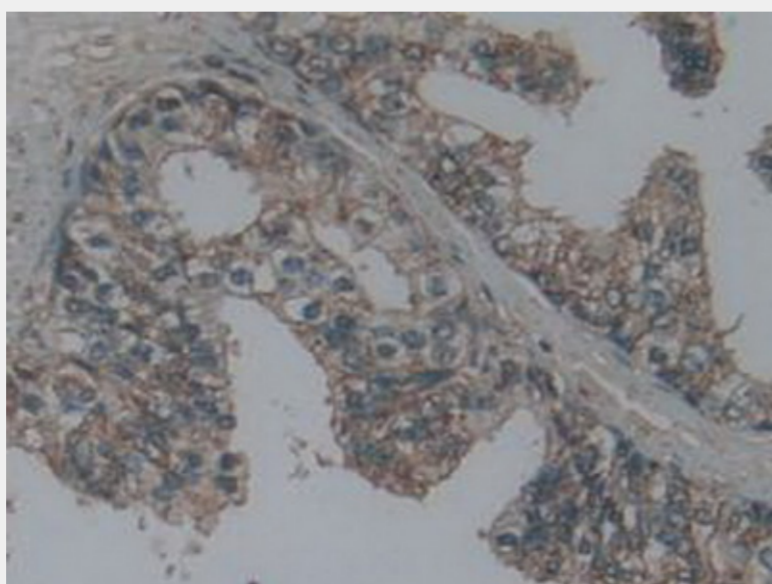


Figure. DAB staining on IHC-P;
Samples: Human Prostate Gland Tissue.)

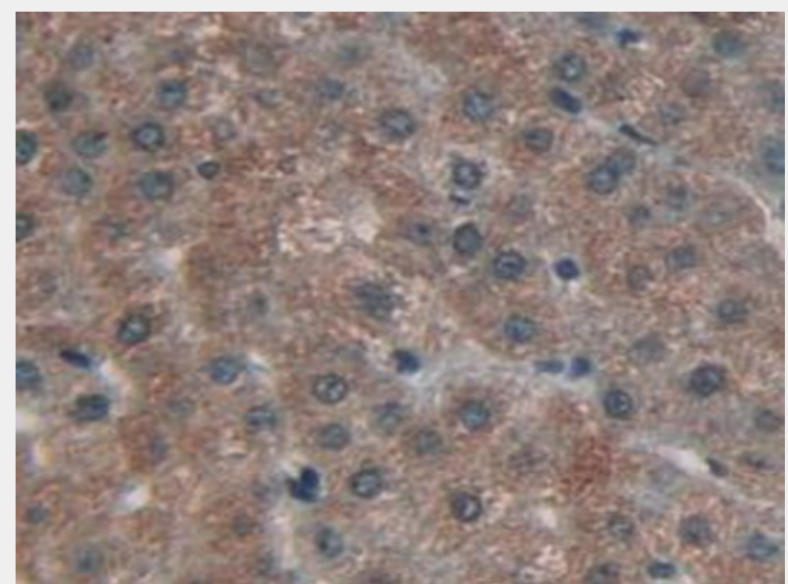


Figure. DAB staining on IHC-P;
Samples: Human Liver Tissue.)

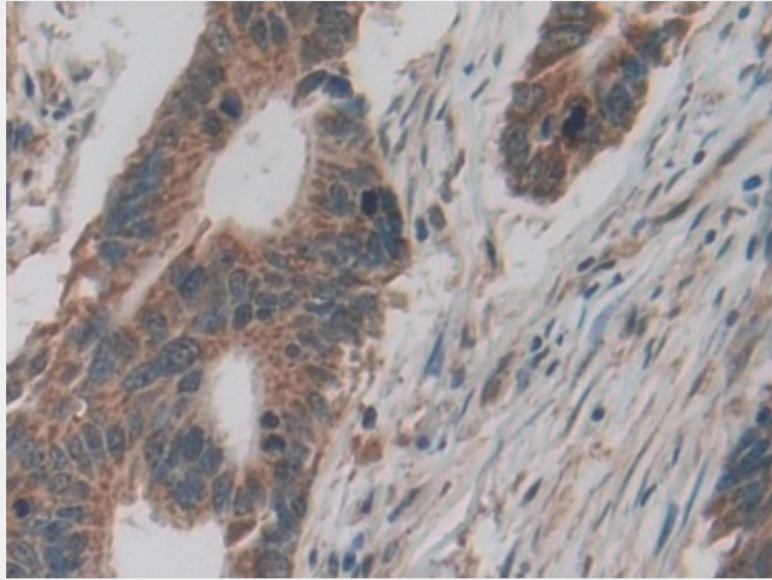


Figure. DAB staining on IHC-P; Samples: Human Rectum Cancer Tissue.)

All products are for RESEARCH USE ONLY. Not for diagnostic & therapeutic purposes!