

# APC/CY7 Linked Polyclonal Antibody to Protein Kinase D2 (PKD2)

Catalog No: tcua6782APCCY7



## Available Sizes

---

**Size:** 100ug



## Specifications

---

**Application:**

WB; IHC; ICC; IP.

**Species Reactivity:**

Rabbit

**Host Species:**

Rabbit

**Immunogen / Amino acids:**

PKD2 (Glu621~Ser832)

**Conjugation:**

APC/CY7

**Clonality:**

Polyclone

**Concentration:**

200ug/ml

**Storage Instruction:**

Avoid repeated freeze/thaw cycles. Store at 4 °C for frequent use. Aliquot and store at -20 °C for 12 months.

**Alternative Names:**

PRKD2; PRK-D2; PRKD-2; PK-D2; HSPC187; nPKC-D2; Serine/threonine-protein kinase D2

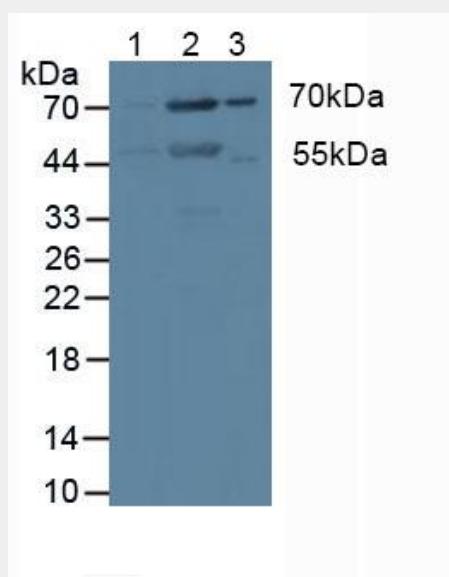


Figure. Western Blot; Sample: Lane1: Human Hela Cells; Lane2: Human MCF7 Cells.)

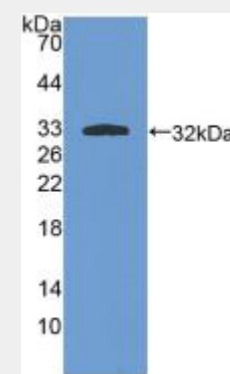


Figure. Western Blot; Sample: Recombinant PKCi, Human.)

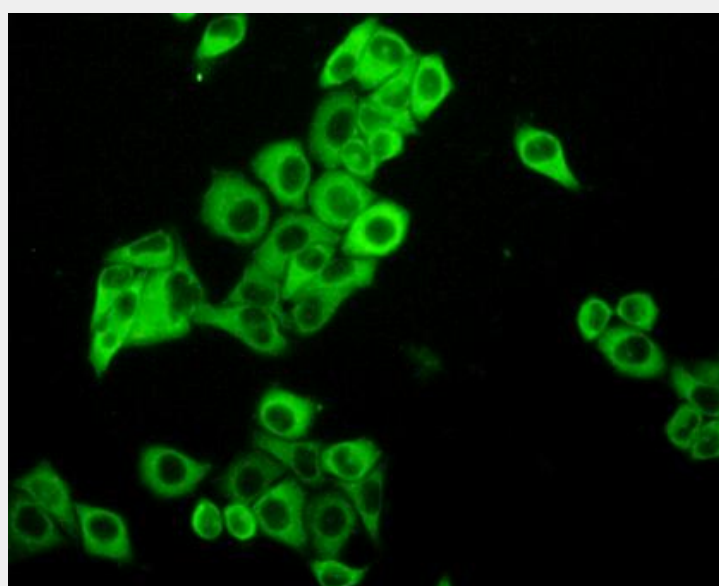


Figure:FITC staining on IHC-P  
Simple: MCF7 cells)

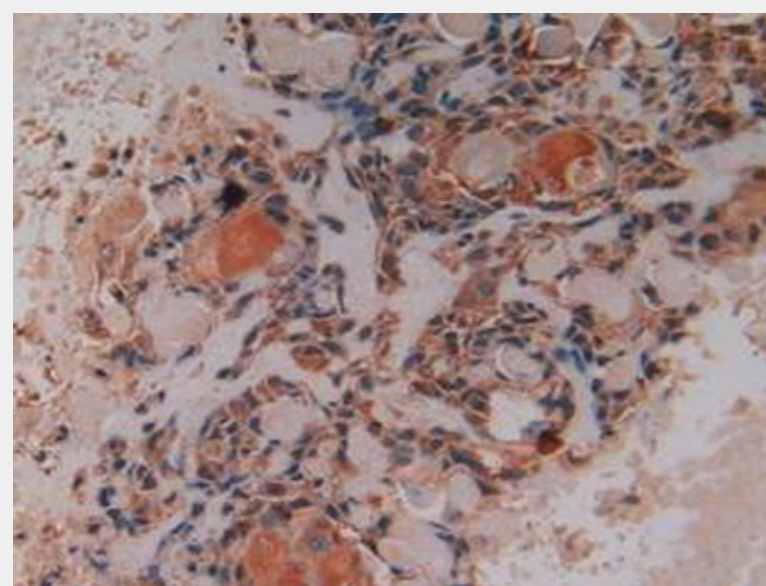


Figure. DAB staining on IHC-P;  
Samples: Human Lung Cancer Tissue.)

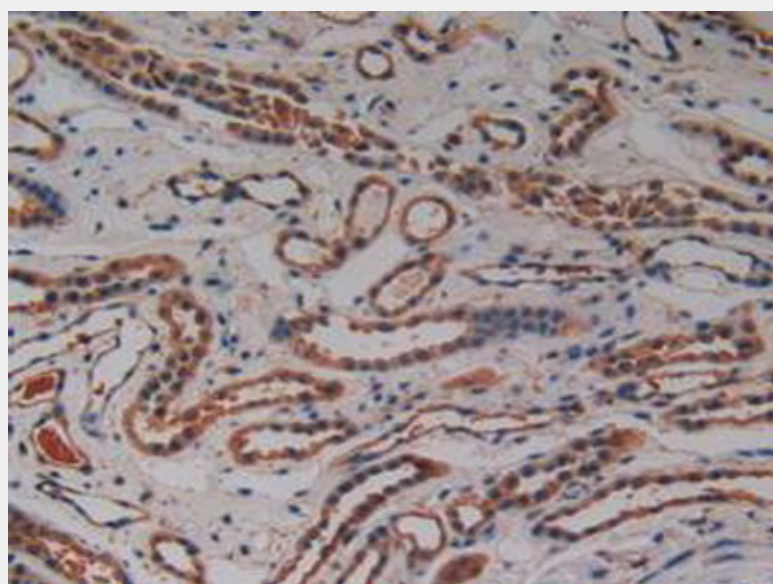


Figure. DAB staining on IHC-P;  
Samples: Human Kidney Tissue.)

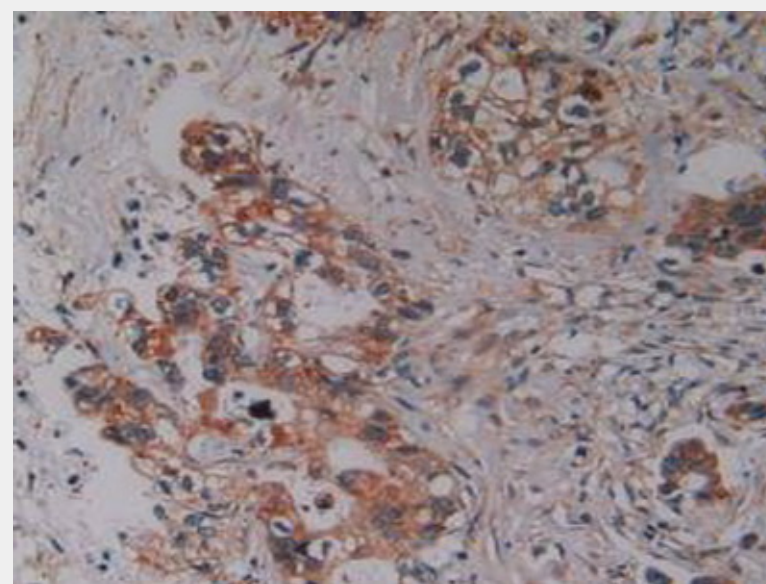


Figure. DAB staining on IHC-P;  
Samples: Human Pancreas Cancer Tissue.)

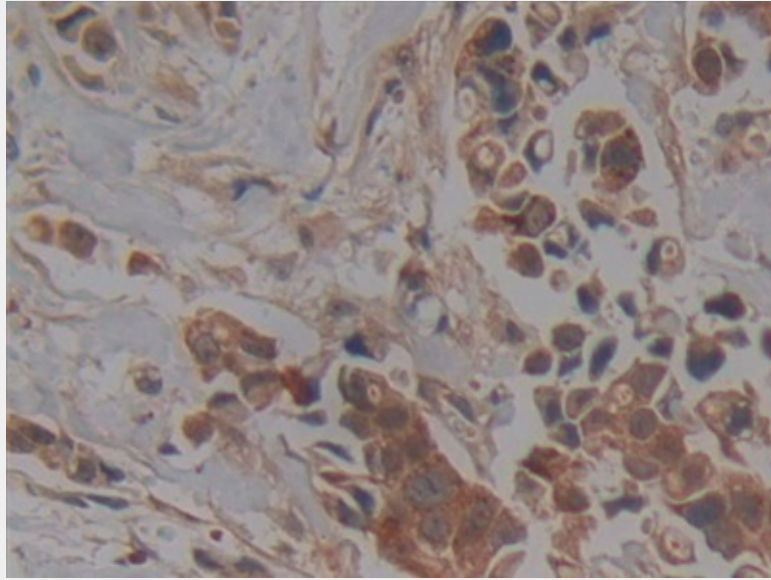


Figure. DAB staining on IHC-P; Samples: Human Breast Cancer Tissue.)

All products are for RESEARCH USE ONLY. Not for diagnostic & therapeutic purposes!