

APC/CY7 Linked Polyclonal Antibody to Tissue Inhibitors Of Metalloproteinase 1 (TIMP1)

Catalog No: tcua6681APCCY7



Available Sizes

Size: 100ug



Specifications

Application:

WB; IHC; ICC; IP.

Species Reactivity:

Rabbit

Host Species:

Rabbit

Immunogen / Amino acids:

TIMP1 (Cys24~Ala217)

Conjugation:

APC/CY7

Clonality:

Polyclone

Concentration:

200ug/ml

Storage Instruction:

Avoid repeated freeze/thaw cycles. Store at 4 °C for frequent use. Aliquot and store at -20 °C for 12 months.

Alternative Names:

EPO; CLGI; EPA; HCl; Erythroid Potentiating Activity; Collagenase Inhibitor; Metalloproteinase inhibitor 1; Fibroblast collagenase inhibitor

SwissProt:
P30120

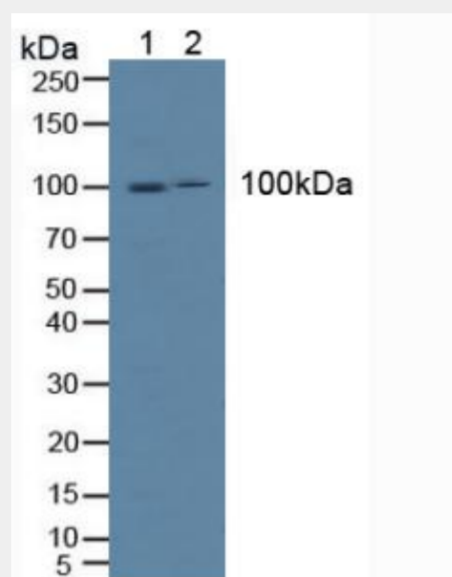


Figure. Western Blot; Sample: Lane1: Human HeLa Cells; Lane2: Human K562 Cells.)

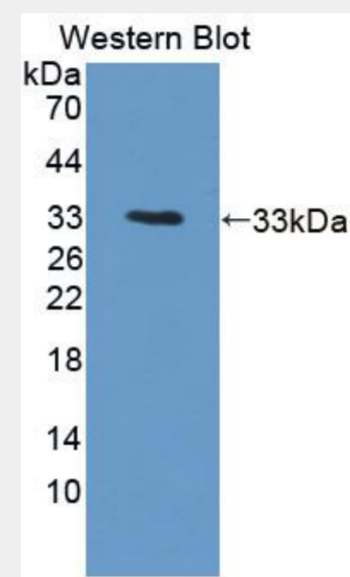


Figure. Western Blot; Sample: Recombinant ICAM1, Rat.)

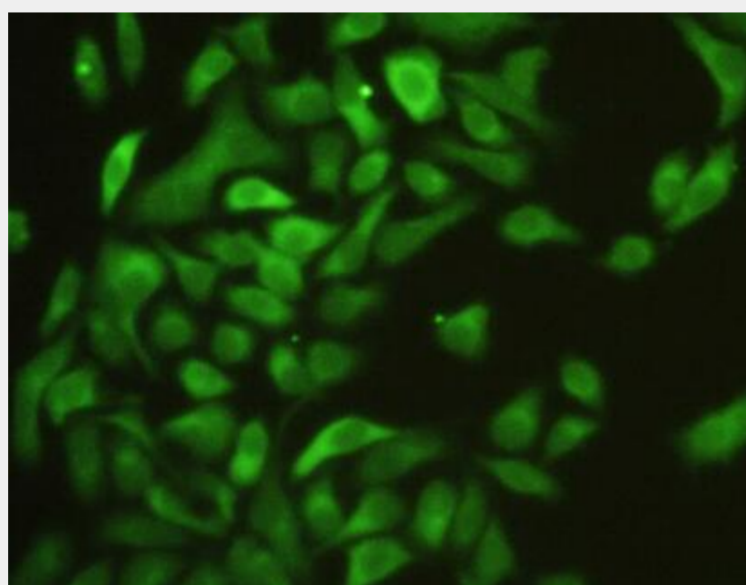


Figure:FITC staining on IHC-P;
Simple: HeLa cells)

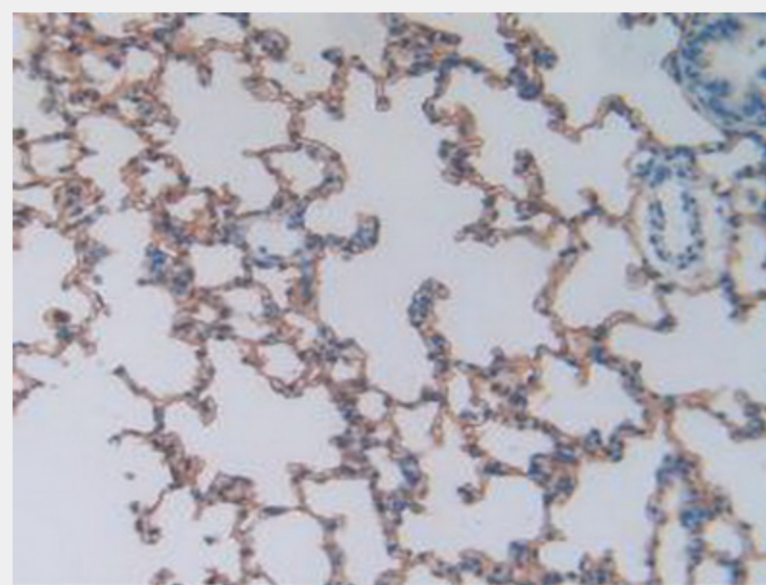


Figure. DAB staining on IHC-P;
Samples: Rat Lung Tissue.)

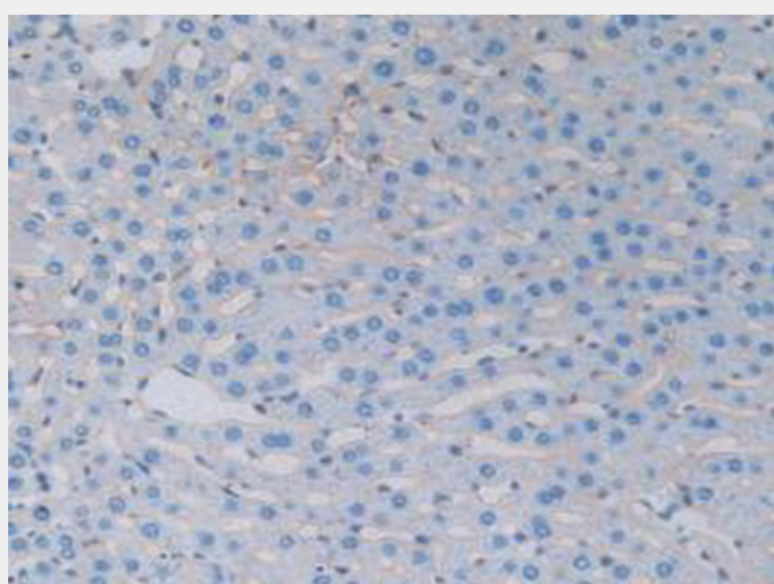


Figure. DAB staining on IHC-P;
Samples: Rat Liver Tissue.)

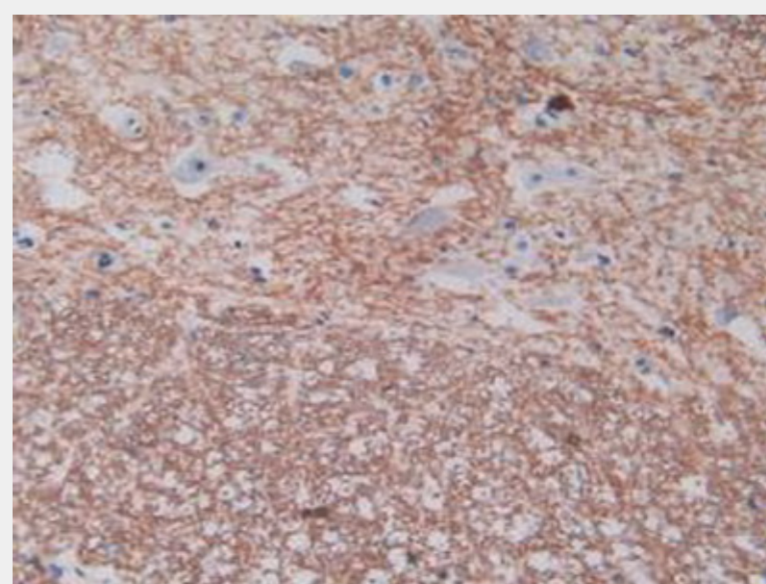


Figure. DAB staining on IHC-P;
Samples: Rat Spinal Cord Tissue.)

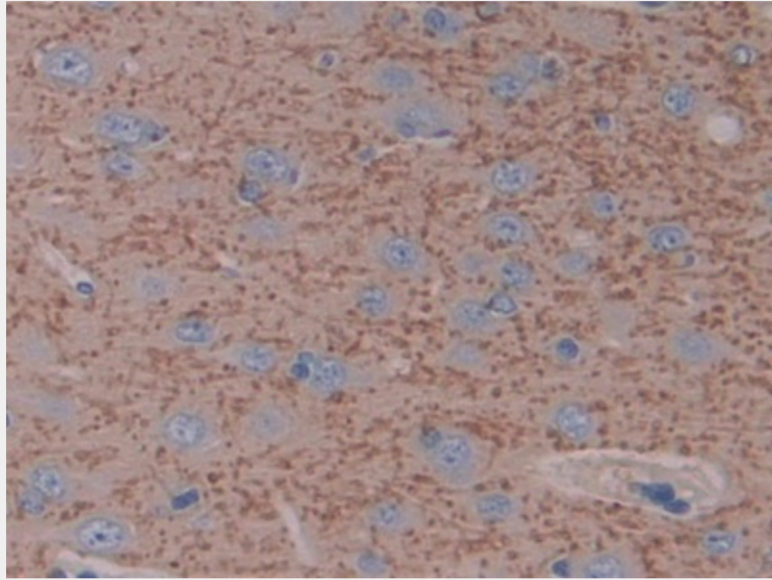


Figure. DAB staining on IHC-P; Samples: Rat Brain Tissue.)

All products are for RESEARCH USE ONLY. Not for diagnostic & therapeutic purposes!