

# APC/CY7 Linked Polyclonal Antibody to Telomerase Associated Protein 1 (TEP1)

Catalog No: tcua6667APCCY7



## Available Sizes

**Size:** 100ug



## Specifications

**Application:**

WB; IHC; ICC; IP.

**Species Reactivity:**

Rabbit

**Host Species:**

Rabbit

**Immunogen / Amino acids:**

TEP1 (Glu2368~Glu2627)

**Conjugation:**

APC/CY7

**Clonality:**

Polyclone

**Concentration:**

200ug/ml

**Storage Instruction:**

Avoid repeated freeze/thaw cycles. Store at 4 °C for frequent use. Aliquot and store at -20 °C for 12 months.

**Alternative Names:**

TLP1; TP1; TROVE1; VAULT2; p240; TROVE Domain Family Member 1; Telomerase protein component 1; p80 telomerase homolog

**SwissProt:**

Q99973

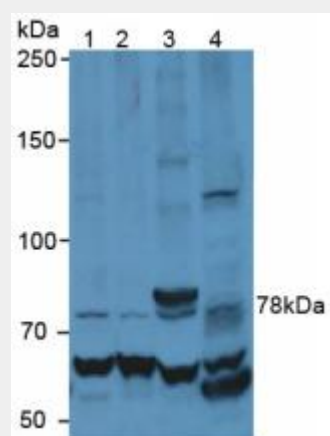
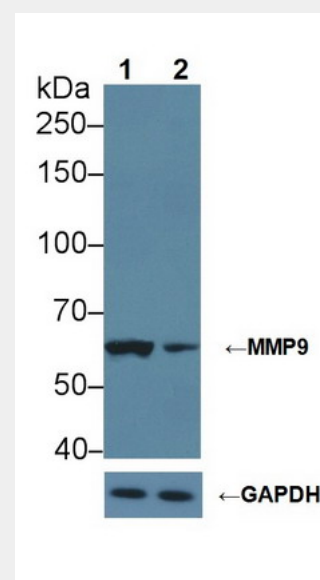


Figure. Western Blot; Sample: Lane1: Human Jurkat Cells; Lane2: Human HepG2 Cells; Lane3: Human Raji Cells; Lane4: Rat Brain Tissue.)



Knockout Varification: <br>Lane 1: Wild-type Jurkat cell lysate; <br>Lane 2: MMP9 knockout Jurkat cell lysate; <br>Predicted MW: 79kDa <br>Observed MW: 62kDa<br>Primary Ab: 2μg/ml Rabbit Anti-Rat MMP9 Antibody<br>Second Ab: 0.2μg/mL HRP-Linked Caprine Anti-Rabbit IgG Polyclonal Antibody<br>Catalog: SAA544Rb19)

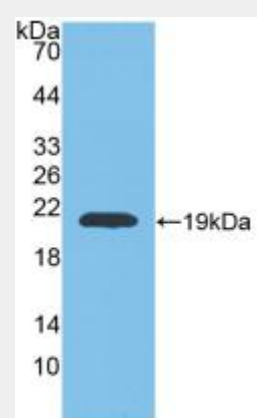


Figure. Western Blot; Sample: Recombinant MMP9, Rat.)

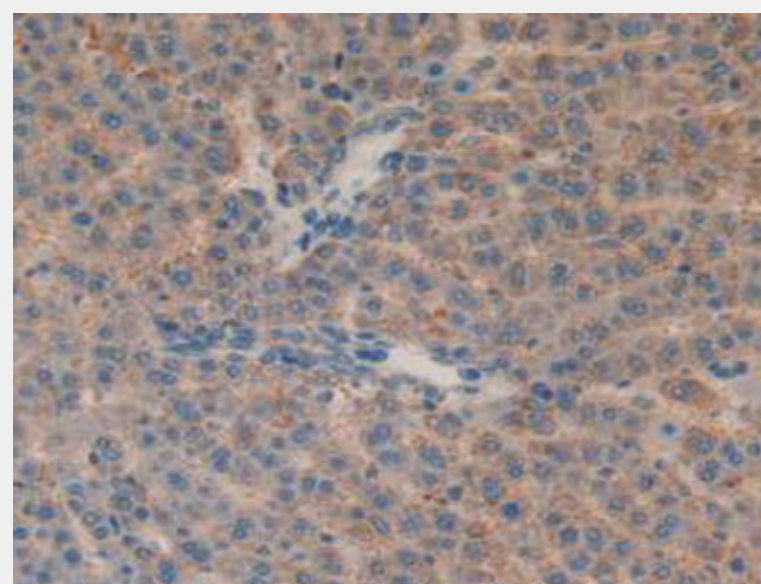


Figure. DAB staining on IHC-P; Samples: Rat Liver Tissue.)

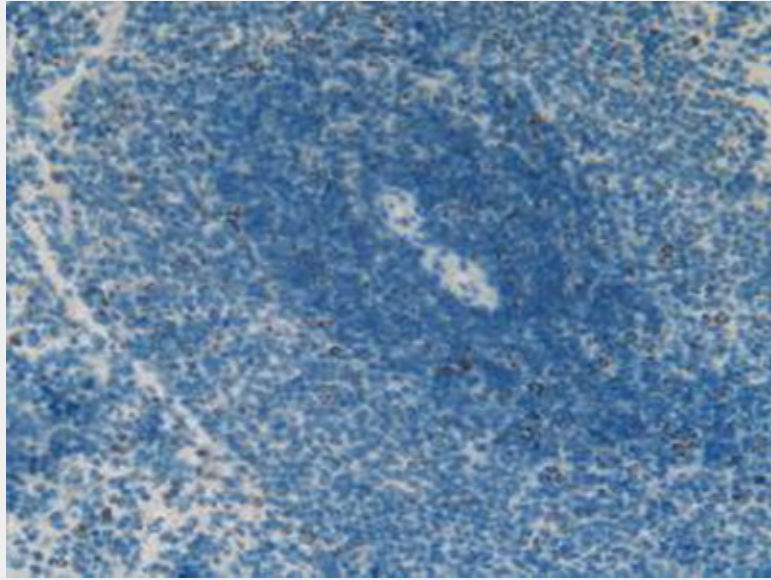


Figure. DAB staining on IHC-P;  
Samples: Rat Spleen Tissue.)

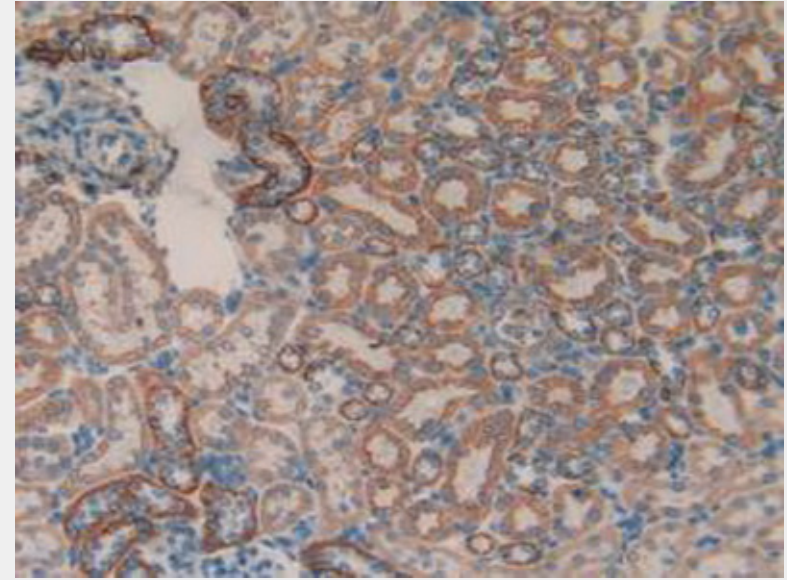


Figure. DAB staining on IHC-P;  
Samples: Rat Kidney Tissue.)

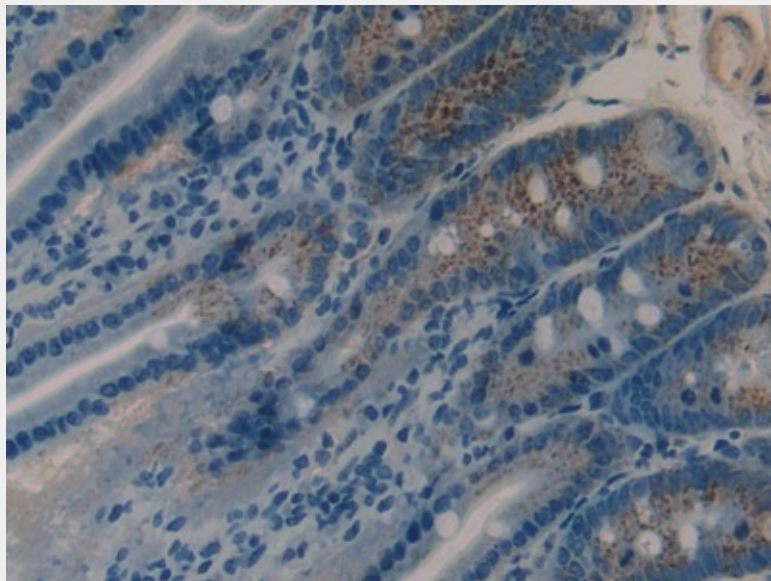


Figure. DAB staining on IHC-P; Samples: Rat Intestine Tissue.)

All products are for RESEARCH USE ONLY. Not for diagnostic & therapeutic purposes!