

# APC/CY7 Linked Polyclonal Antibody to A Disintegrin And Metalloprotease 8 (ADAM8)

Catalog No: tcua6511APCCY7



## Available Sizes

**Size:** 100ug



## Specifications

**Application:**

WB; IHC; ICC; IP.

**Species Reactivity:**

Rabbit

**Host Species:**

Rabbit

**Immunogen / Amino acids:**

ADAM8 (Ser371~Glu587)

**Conjugation:**

APC/CY7

**Clonality:**

Polyclone

**Concentration:**

200ug/ml

**Storage Instruction:**

Avoid repeated freeze/thaw cycles. Store at 4 °C for frequent use. Aliquot and store at -20 °C for 12 months.

**Alternative Names:**

CD156-A; MS2; CD156a; Disintegrin and metalloproteinase domain-containing protein 8

**SwissProt:**

P78325

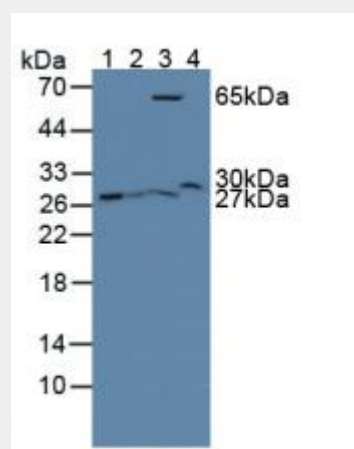


Figure. Western Blot; Sample: Lane1: Rat Kidney Tissue; Lane2: Rat Lung Tissue; Lane3: Rat Pancreas Tissue; Lane4: Mouse Lung Tissue.)

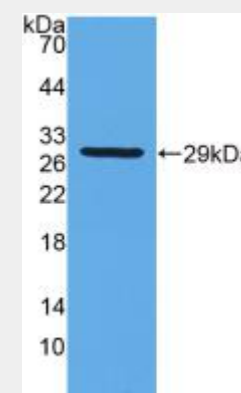


Figure. Western Blot; Sample: Recombinant GSTt2, Rat.)

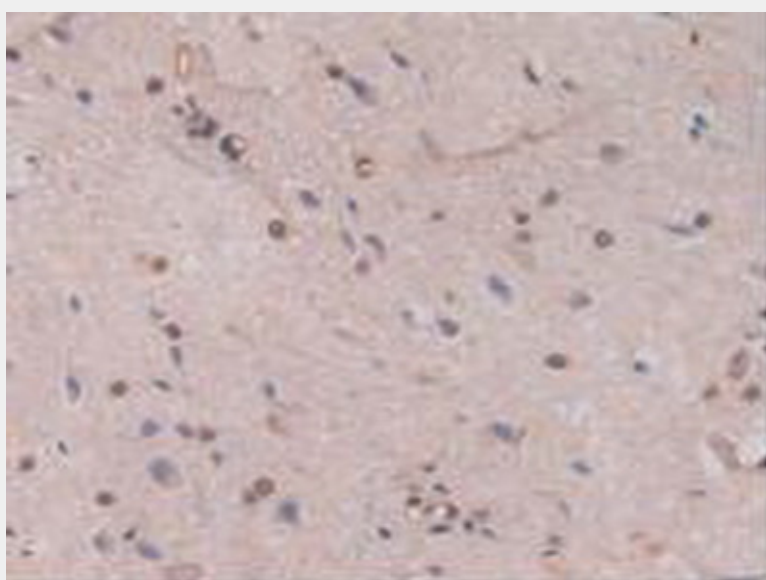


Figure. DAB staining on IHC-P;  
Samples: Rat Spinal Cord Tissue.)

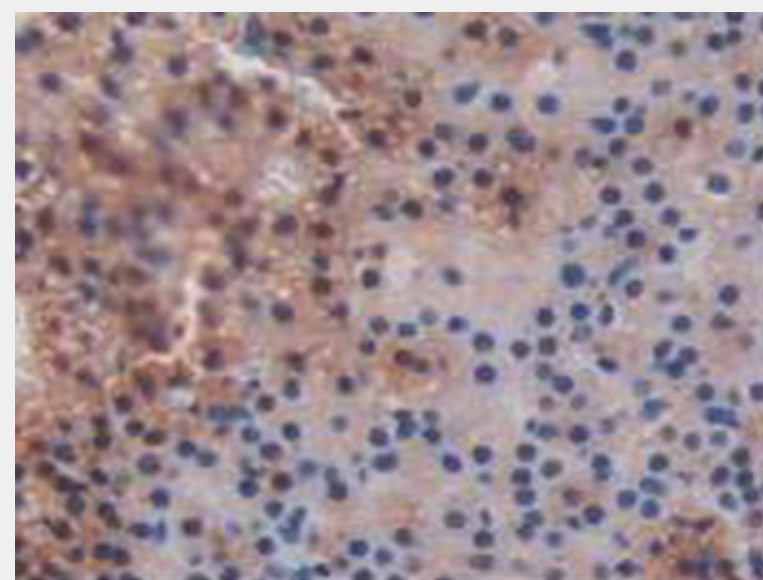


Figure. DAB staining on IHC-P;  
Samples: Rat Adrenal Gland Tissue.)

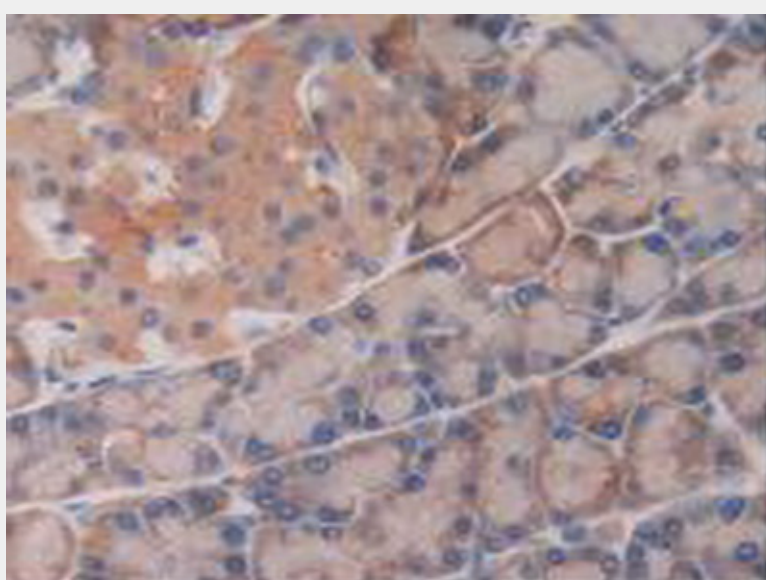


Figure. DAB staining on IHC-P;  
Samples: Rat Pancreas Tissue.)

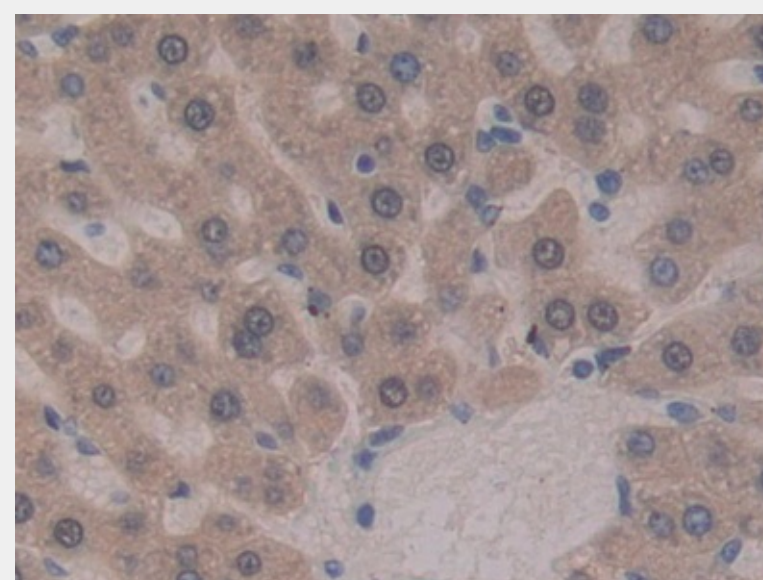


Figure. DAB staining on IHC-P; Samples: Rat Liver Tissue.)

All products are for RESEARCH USE ONLY. Not for diagnostic & therapeutic purposes!