

APC/CY7 Linked Polyclonal Antibody to Hepatoma Derived Growth Factor (HDGF)

Catalog No: tcua6503APCCY7



Available Sizes

Size: 100ug



Specifications

Application:

WB; IHC; ICC; IP.

Species Reactivity:

Rabbit

Host Species:

Rabbit

Immunogen / Amino acids:

HDGF (Asp14~Gly187)

Conjugation:

APC/CY7

Clonality:

Polyclone

Concentration:

200ug/ml

Storage Instruction:

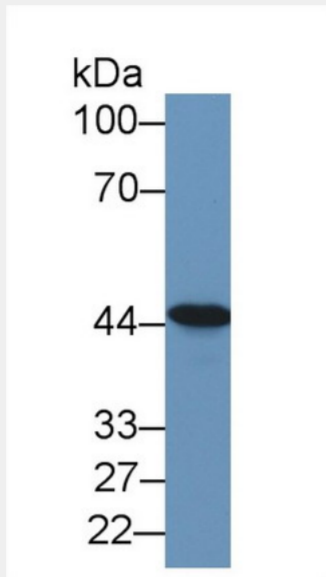
Avoid repeated freeze/thaw cycles. Store at 4 °C for frequent use. Aliquot and store at -20 °C for 12 months.

Alternative Names:

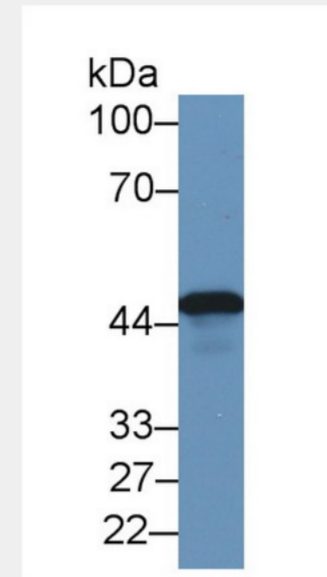
HMG1L2; High-Mobility Group Protein 1-Like 2

SwissProt:

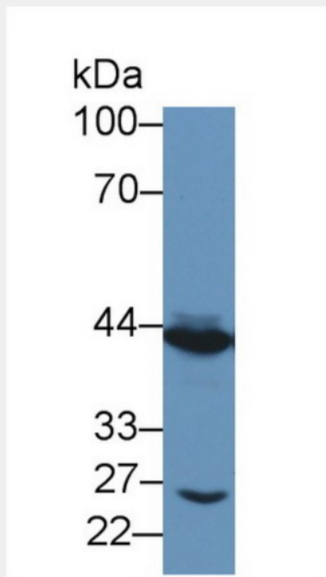
P51859



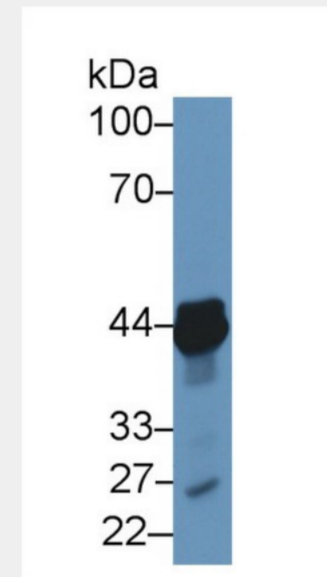
Western Blot; Sample: Human Lung lysate; Primary Ab: 1 μ g/ml Rabbit Anti-Human TACR2 Antibody Second Ab: 0.2 μ g/mL HRP-Linked Caprine Anti-Rabbit IgG Polyclonal Antibody (Catalog: SAA544Rb19)



Western Blot; Sample: Human Hela cell lysate; Primary Ab: 1 μ g/ml Rabbit Anti-Human TACR2 Antibody Second Ab: 0.2 μ g/mL HRP-Linked Caprine Anti-Rabbit IgG Polyclonal Antibody Catalog: SAA544Rb19)



Western Blot; Sample: Porcine Small intestine lysate; Primary Ab: 1 μ g/ml Rabbit Anti-Human TACR2 Antibody Second Ab: 0.2 μ g/mL HRP-Linked Caprine Anti-Rabbit IgG Polyclonal Antibody Catalog: SAA544Rb19)



Western Blot; Sample: Porcine Heart lysate; Primary Ab: 1 μ g/ml Rabbit Anti-Human TACR2 Antibody Second Ab: 0.2 μ g/mL HRP-Linked Caprine Anti-Rabbit IgG Polyclonal Antibody Catalog: SAA544Rb19)

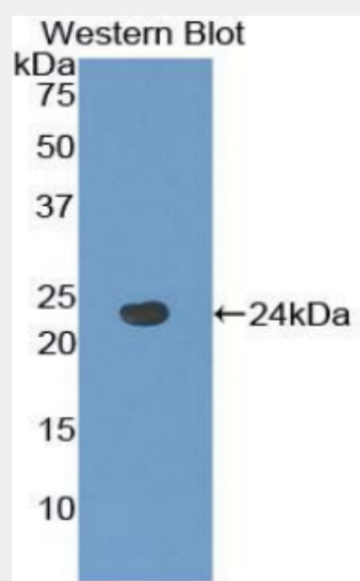


Figure. Western Blot; Sample: Recombinant protein.)

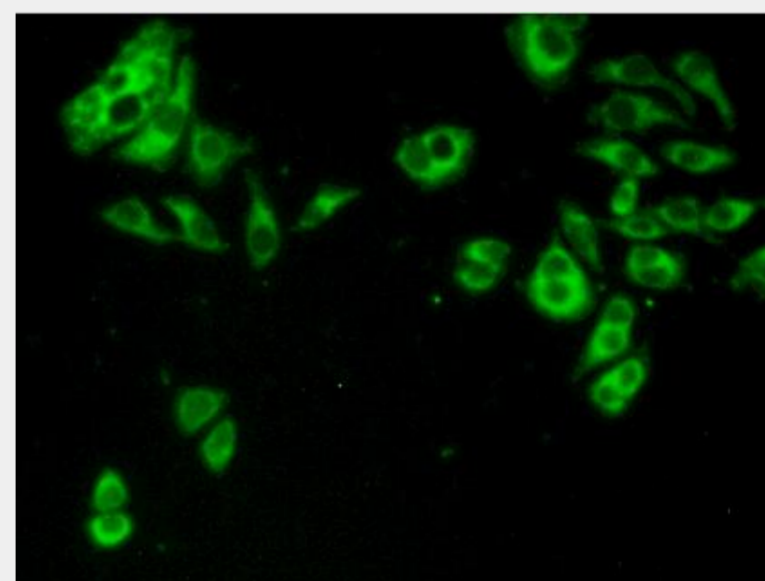
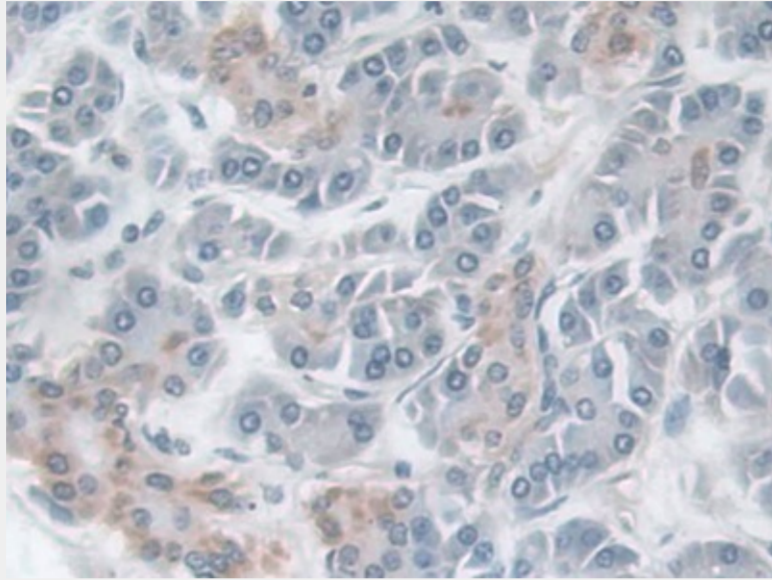


Figure:FITC staining on IHC-P
Simple: Hela cells)



DAB staining on IHC-P; Samples: Human Pancreatic cancer Tissue)

All products are for RESEARCH USE ONLY. Not for diagnostic & therapeutic purposes!