

APC/CY7 Linked Polyclonal Antibody to Hyaluronan Binding Protein 1 (HABP1)

Catalog No: tcua6449APCCY7



Available Sizes

Size: 100ug



Specifications

Application:

WB; IHC; ICC; IP.

Species Reactivity:

Rabbit

Host Species:

Rabbit

Immunogen / Amino acids:

HABP1 (Thr76~Gln282)

Conjugation:

APC/CY7

Clonality:

Polyclone

Concentration:

200ug/ml

Storage Instruction:

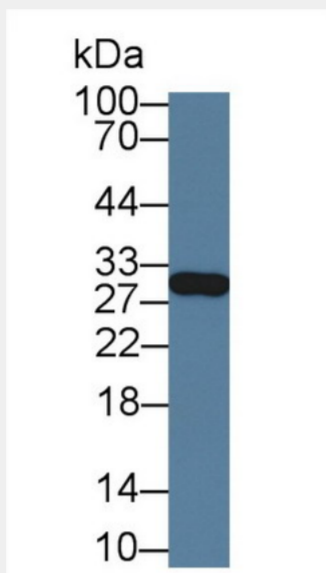
Avoid repeated freeze/thaw cycles. Store at 4 °C for frequent use. Aliquot and store at -20 °C for 12 months.

Alternative Names:

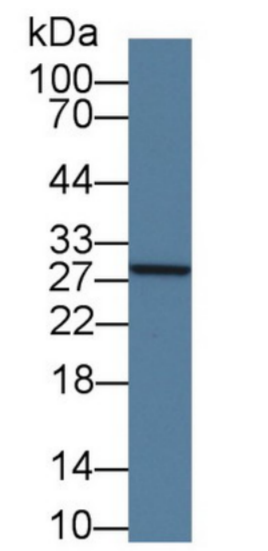
C1QBP; GC1QBP; SF2p32; GC1Q-R; GC1qR; P32; Complement Component 1 Q Subcomponent Binding Protein; Splicing Factor SF2-Associated Protein; ASF/SF2-associated p32

SwissProt:

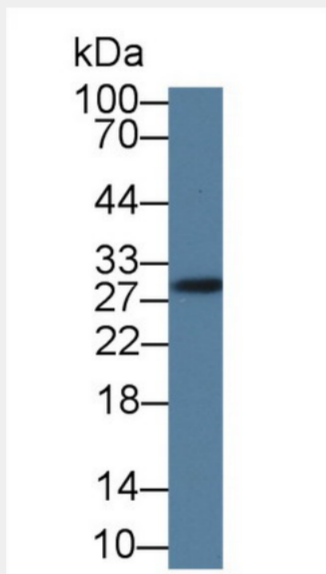
Q07021



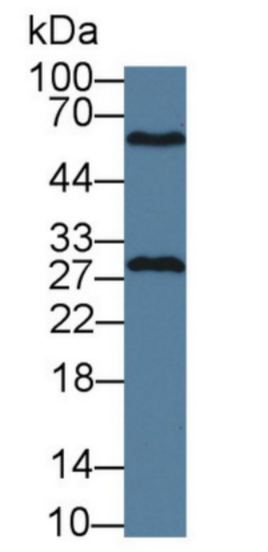
Western Blot; Sample: Rat Liver lysate; Primary Ab: 1µg/ml Rabbit Anti-Rat GSTm4 Antibody Second Ab: 0.2µg/mL HRP-Linked Caprine Anti-Rabbit IgG Polyclonal Antibody (Catalog: SAA544Rb19)



Western Blot; Sample: Rat Lung lysate; Primary Ab: 1µg/ml Rabbit Anti-Rat GSTm4 Antibody Second Ab: 0.2µg/mL HRP-Linked Caprine Anti-Rabbit IgG Polyclonal Antibody Catalog: SAA544Rb19)



Western Blot; Sample: Rat Heart lysate; Primary Ab: 1µg/ml Rabbit Anti-Rat GSTm4 Antibody Second Ab: 0.2µg/mL HRP-Linked Caprine Anti-Rabbit IgG Polyclonal Antibody Catalog: SAA544Rb19)



Western Blot; Sample: Rat Cerebrum lysate; Primary Ab: 1µg/ml Rabbit Anti-Rat GSTm4 Antibody Second Ab: 0.2µg/mL HRP-Linked Caprine Anti-Rabbit IgG Polyclonal Antibody Catalog: SAA544Rb19)

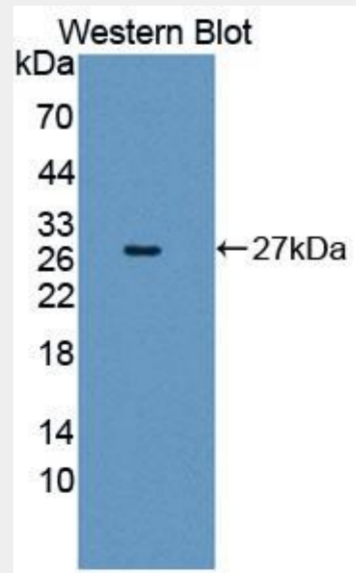
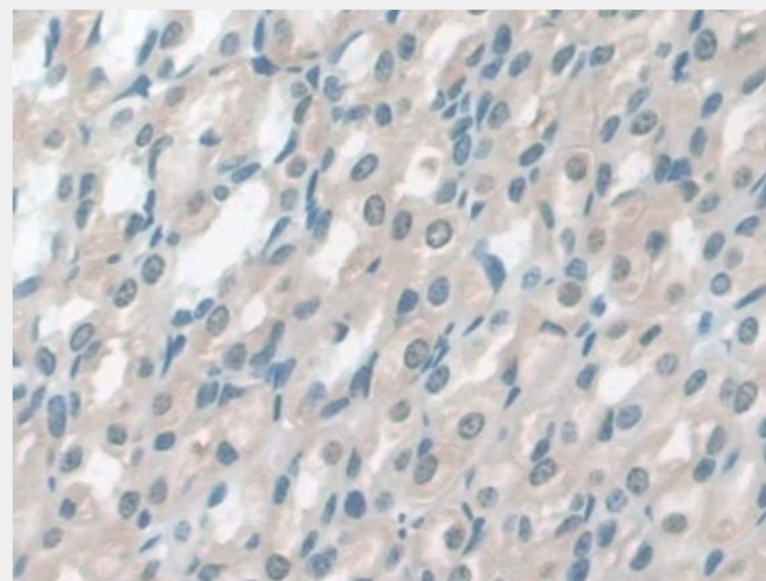
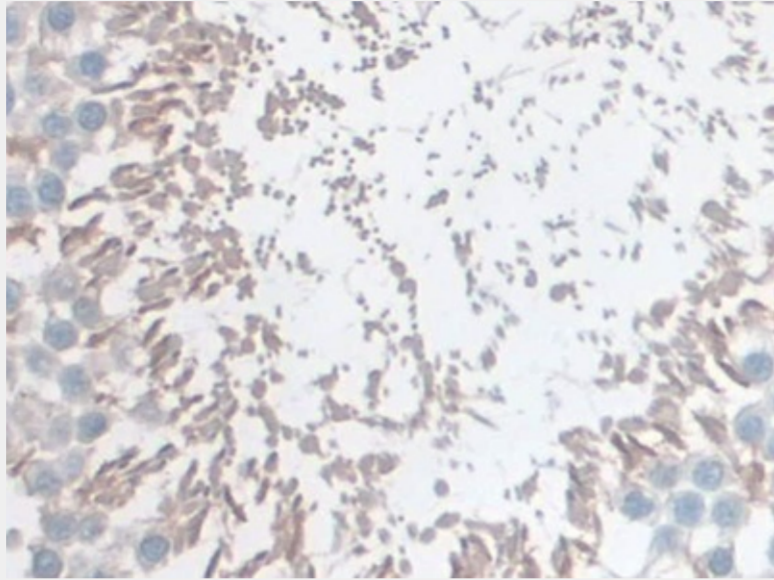


Figure. Western Blot; Sample: Recombinant protein.)



DAB staining on IHC-P;
Samples: Rat Stomach Tissue)



Used in DAB staining on formalin fixed paraffin- embedded Kidney tissue)

All products are for RESEARCH USE ONLY. Not for diagnostic & therapeutic purposes!