

APC/CY7 Linked Polyclonal Antibody to Heparanase (HPA)

Catalog No: tcua6292APCCY7



Available Sizes

Size: 100ug



Specifications

Application:

WB; IHC; ICC; IP.

Species Reactivity:

Rabbit

Host Species:

Rabbit

Immunogen / Amino acids:

HPA (Arg40~Pro188)

Conjugation:

APC/CY7

Clonality:

Polyclone

Concentration:

200ug/ml

Storage Instruction:

Avoid repeated freeze/thaw cycles. Store at 4 °C for frequent use. Aliquot and store at -20 °C for 12 months.

Alternative Names:

HPSE; HPR1; HPSE1; HSE1; Endo-glucuronidase;

SwissProt:

Q71RP1

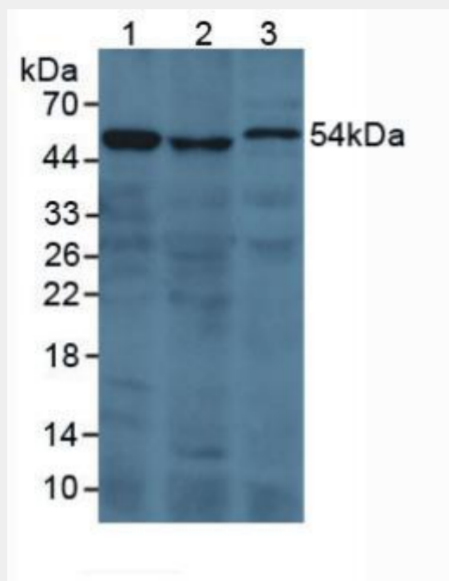


Figure. Western Blot; Sample: Lane1: Human 293T Cells; Lane2: Porcine Kidney Tissue; Lane3: Rat Serum.)

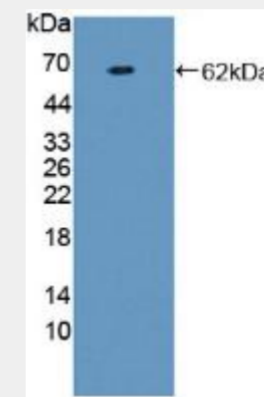


Figure. Western Blot; Sample: Recombinant F1+2, Human.)

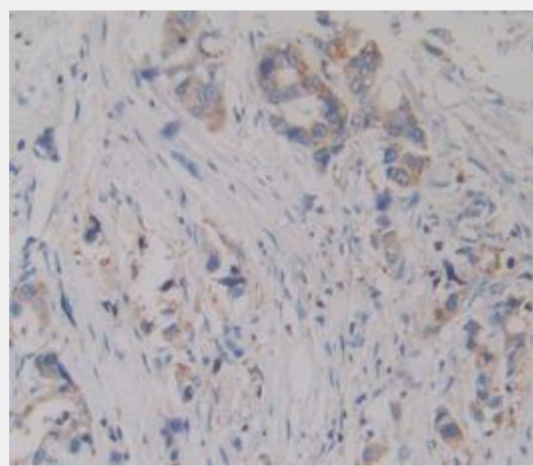


Figure. DAB staining on IHC-P;
Samples: Human Pancreas Cancer Tissue.)

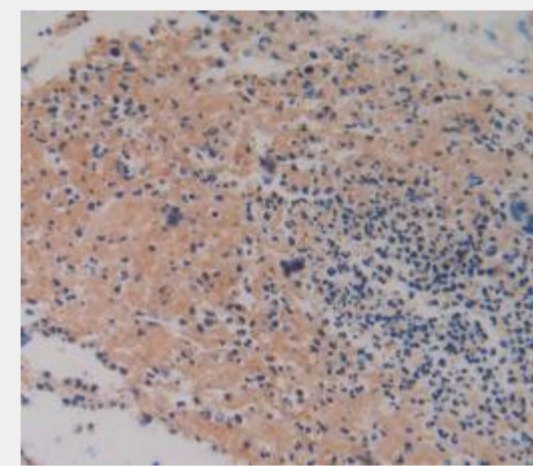


Figure. DAB staining on IHC-P;
Samples: Human Rectum Cancer Tissue.)

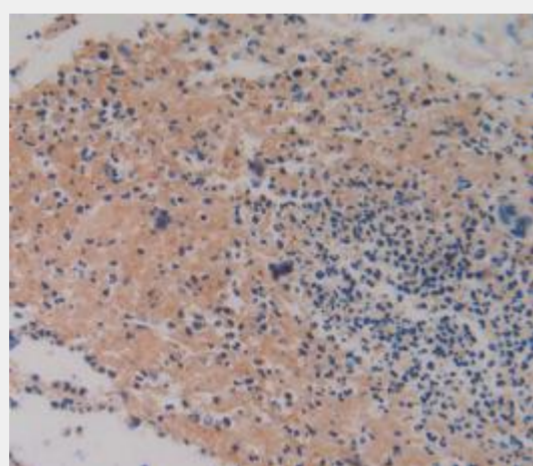


Figure. DAB staining on IHC-P;
Samples: Human Rectum Cancer Tissue.)

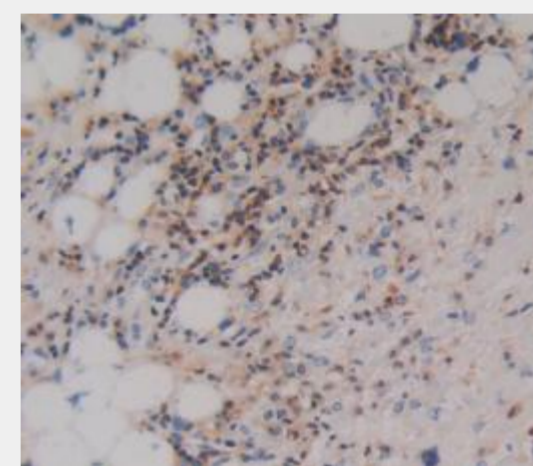


Figure. DAB staining on IHC-P;
Samples: Human Skin Cancer Tissue.)

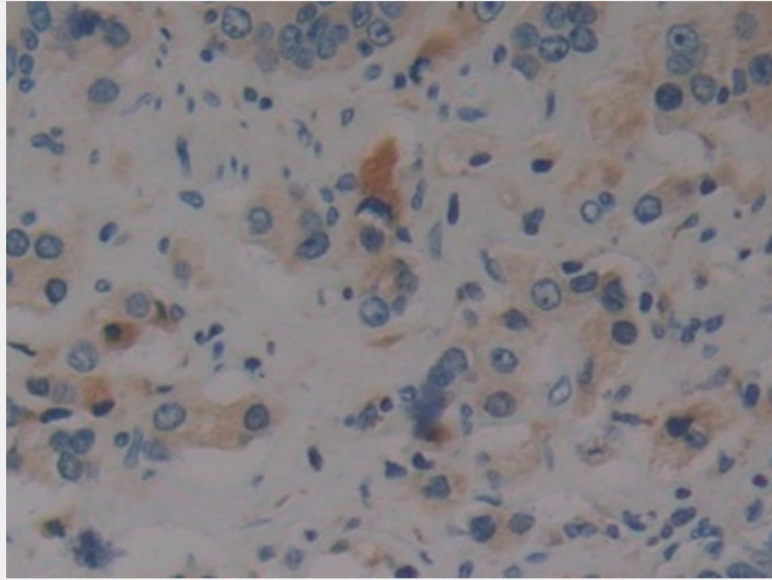


Figure. DAB staining on IHC-P; Samples: Human Prostate Gland Cancer Tissue.)

All products are for RESEARCH USE ONLY. Not for diagnostic & therapeutic purposes!