

APC/CY7 Linked Polyclonal Antibody to Lipase, Hepatic (LIPC)

Catalog No: tcua6190APCCY7



Available Sizes

Size: 100ug



Specifications

Application:

WB; IHC; ICC; IP.

Species Reactivity:

Rabbit

Host Species:

Rabbit

Immunogen / Amino acids:

LIPC (Ile191~Thr466)

Conjugation:

APC/CY7

Clonality:

Polyclone

Concentration:

200ug/ml

Storage Instruction:

Avoid repeated freeze/thaw cycles. Store at 4 °C for frequent use. Aliquot and store at -20 °C for 12 months.

Alternative Names:

HL; HTGL; Hepatic Lipase; Hepatic triacylglycerol lipase; Lipase member C

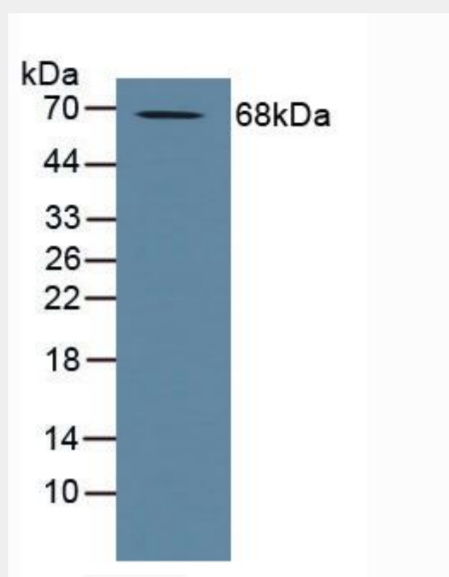


Figure. Western Blot; Sample: Human Placenta Tissue.)

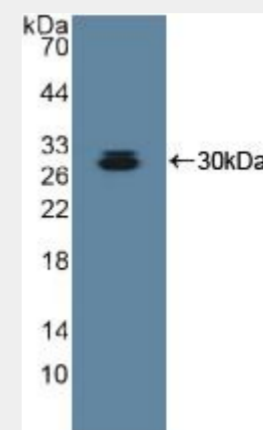


Figure. Western Blot; Sample: Recombinant ADAM10, Human.)

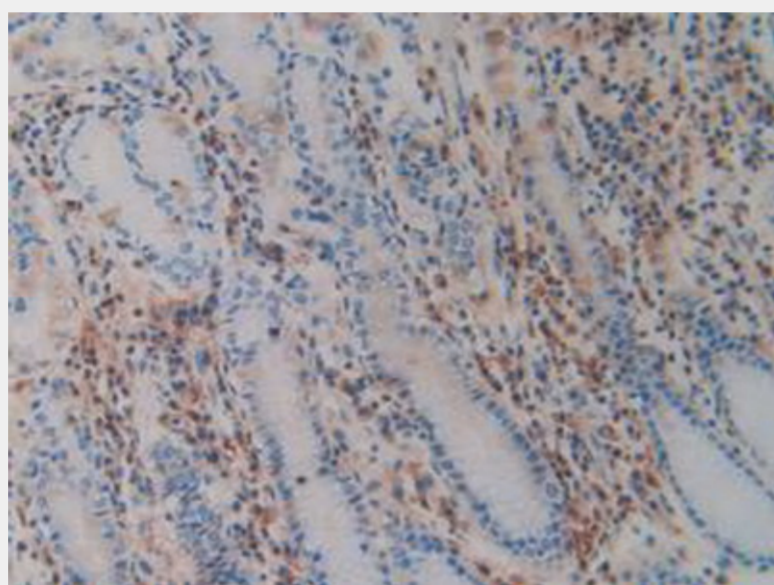


Figure. DAB staining on IHC-P;
Samples: Human Stomach Tissue.)

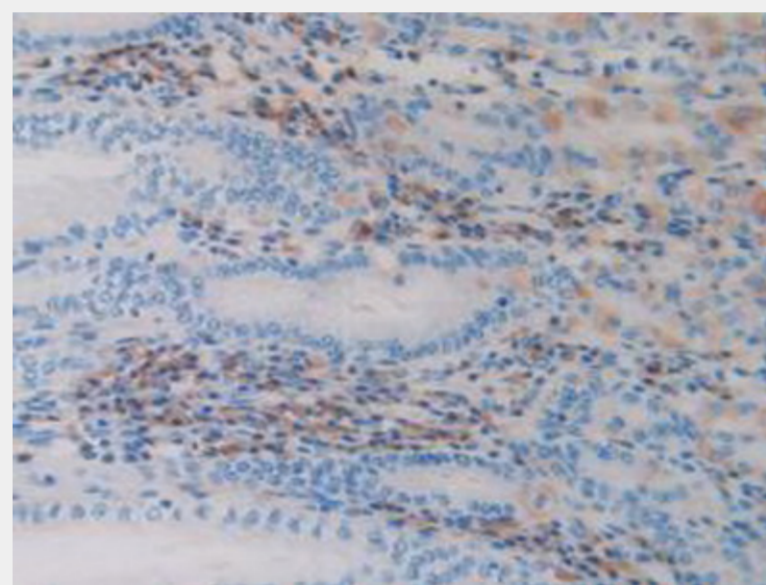


Figure. DAB staining on IHC-P;
Samples: Human Stomach Cancer Tissue.)

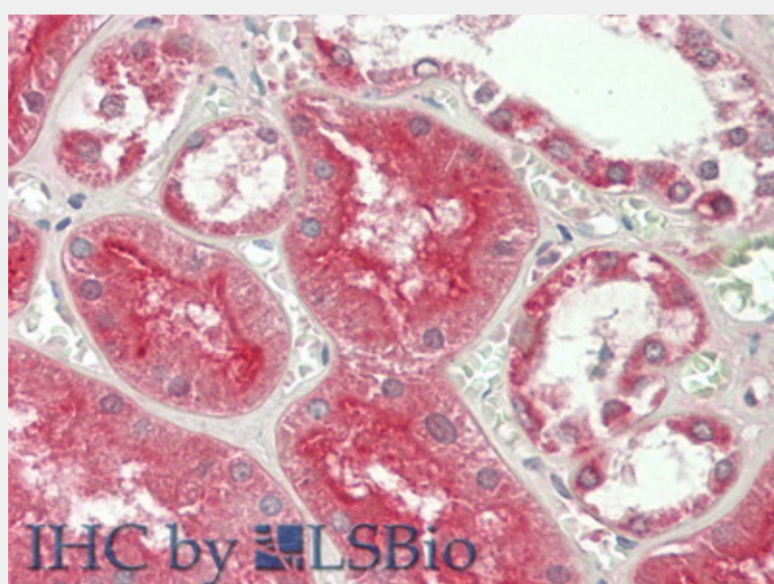


Figure. HE staining on IHC-P;
Samples: Human Kidney Tissue.)

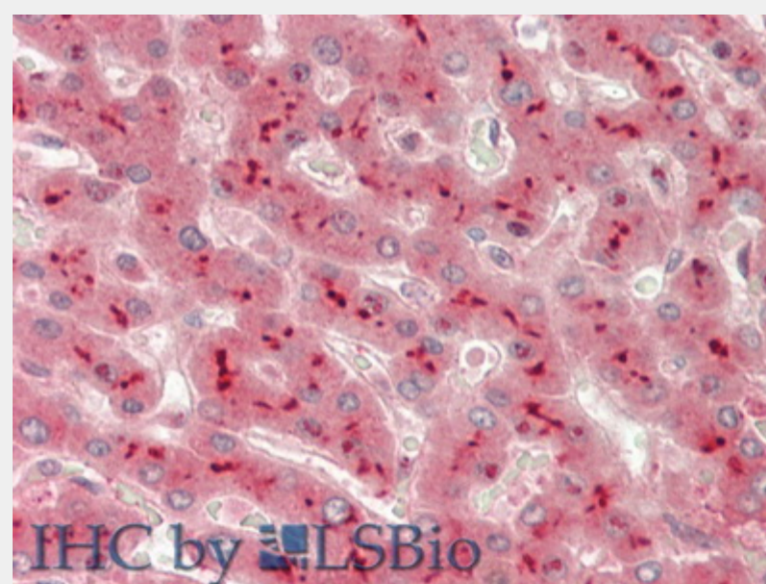


Figure. HE staining on IHC-P;
Samples: Human Liver Tissue.)

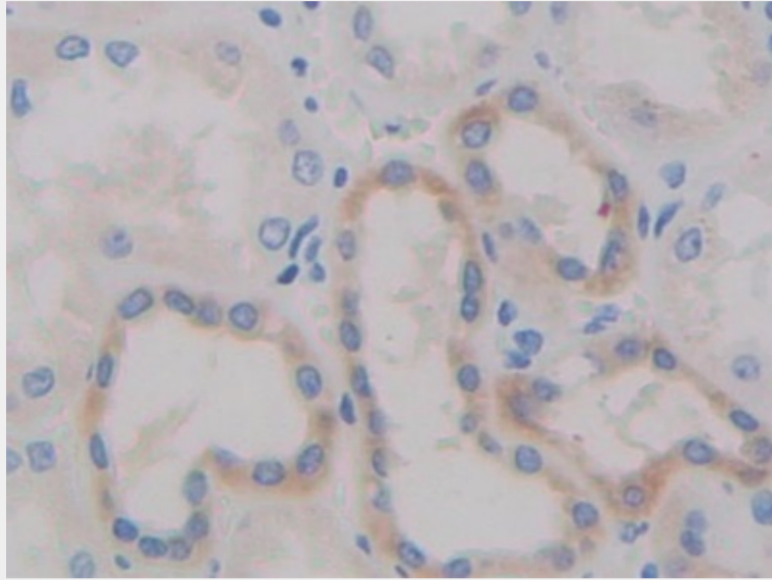


Figure. DAB staining on IHC-P; Samples: Human Kidney Tissue.)

All products are for RESEARCH USE ONLY. Not for diagnostic & therapeutic purposes!