

APC/CY7 Linked Polyclonal Antibody to Follicle Stimulating Hormone (FSH)

Catalog No: tcua6009APCCY7



Available Sizes

Size: 100ug



Specifications

Application:

WB; IHC; ICC; IP.

Species Reactivity:

Rabbit

Host Species:

Rabbit

Immunogen / Amino acids:

FSH (Ala25~Ser116)

Conjugation:

APC/CY7

Clonality:

Polyclone

Concentration:

200ug/ml

Storage Instruction:

Avoid repeated freeze/thaw cycles. Store at 4 °C for frequent use. Aliquot and store at -20 °C for 12 months.

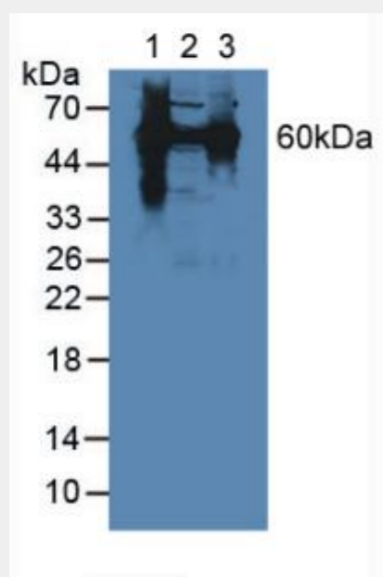


Figure. Western Blot; Sample: Lane1: Mouse Liver Tissue; Lane2: Mouse Lung Tissue; Lane3: Human HeLa Cells.)

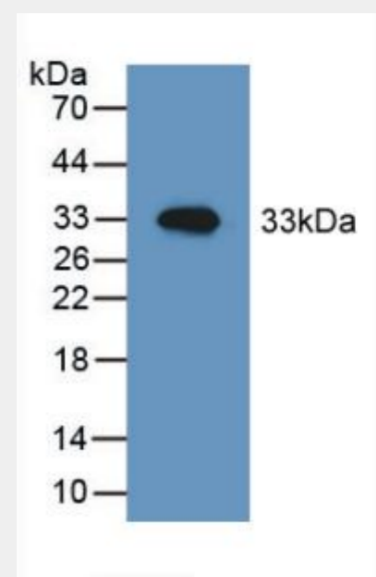


Figure. Western Blot; Sample: Recombinant HSPD1, Mouse.)

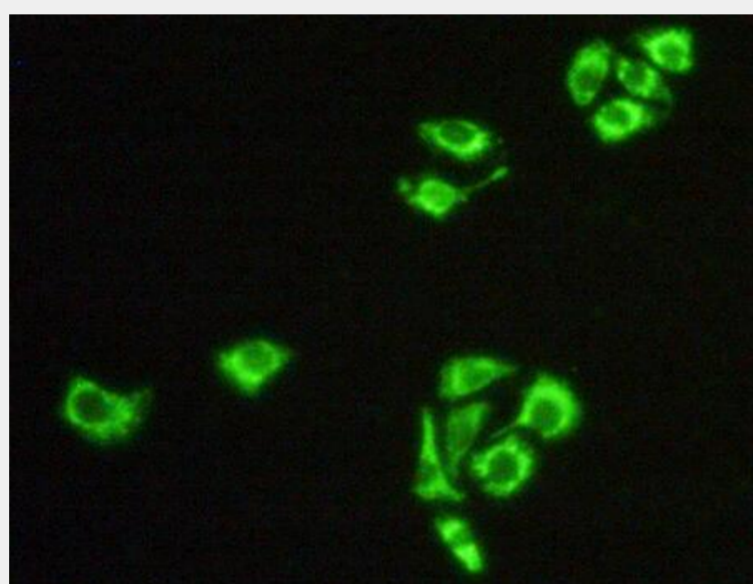


Figure:FITC staining on IHC-P
Simple: HeLa cells)

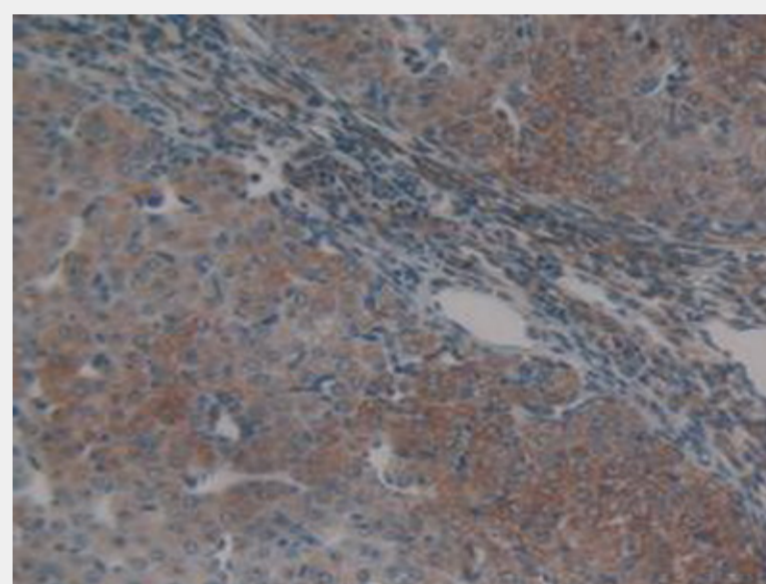


Figure. DAB staining on IHC-P;
Samples: Mouse Ovary Tissue.)

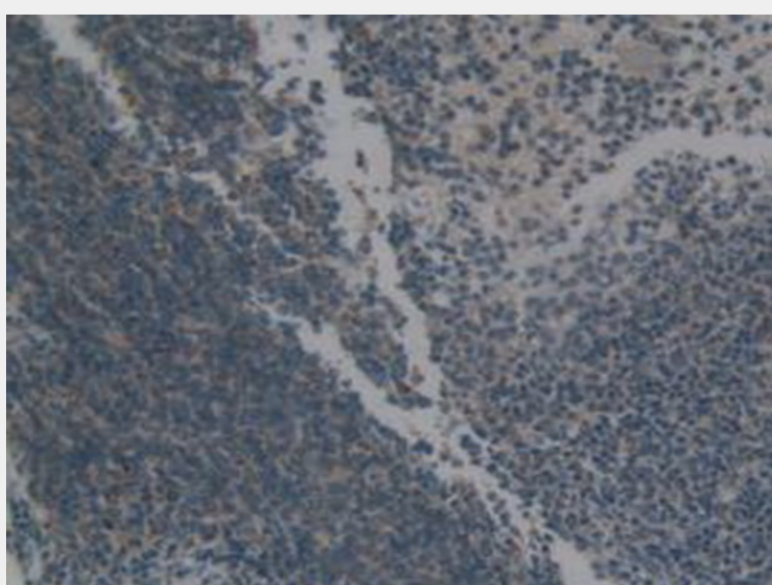


Figure. DAB staining on IHC-P;
Samples: Mouse Spleen Tissue.)

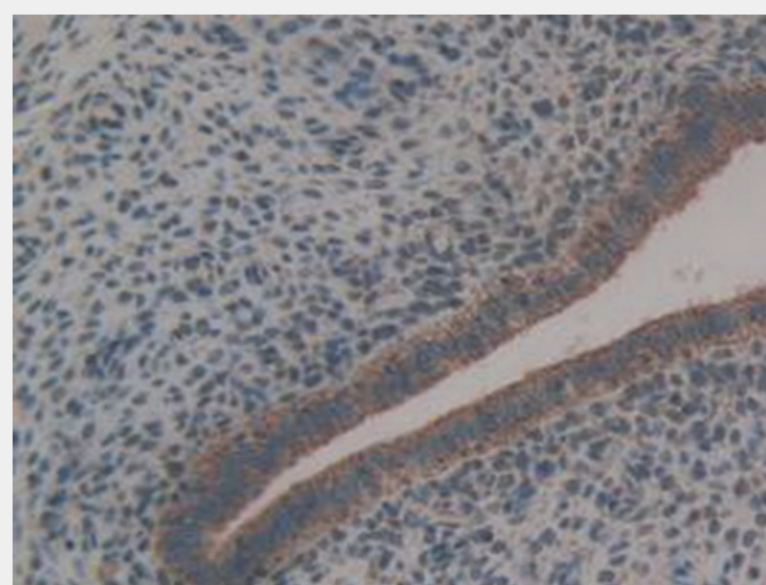


Figure. DAB staining on IHC-P;
Samples: Mouse Uterus Tissue.)

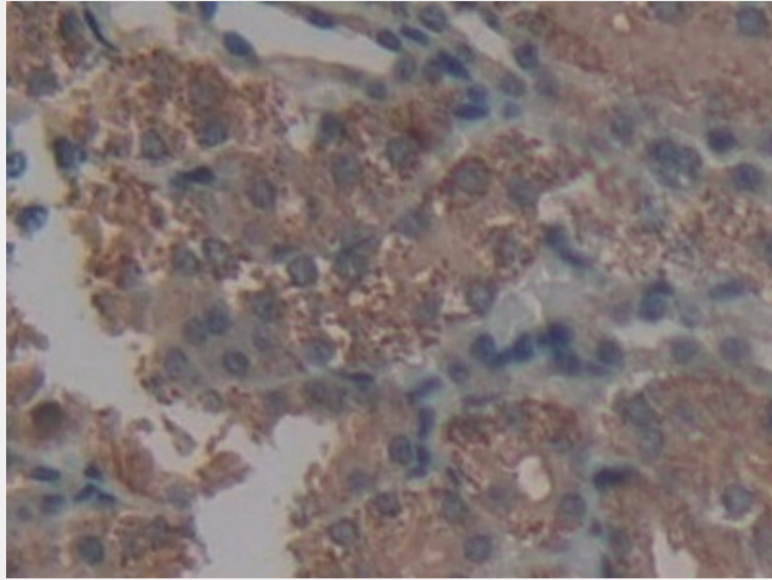


Figure. DAB staining on IHC-P; Samples: Mouse Kidney Tissue.)

All products are for RESEARCH USE ONLY. Not for diagnostic & therapeutic purposes!