

APC/CY7 Linked Polyclonal Antibody to Phospholipase A2, Lipoprotein Associated (LpPLA2)

Catalog No: tcua5912APCCY7



Available Sizes

Size: 100ug



Specifications

Application:

WB; IHC; ICC; IP.

Species Reactivity:

Rabbit

Host Species:

Rabbit

Immunogen / Amino acids:

LpPLA2 (Phe22~Asn440)

Conjugation:

APC/CY7

Clonality:

Polyclone

Concentration:

200ug/ml

Storage Instruction:

Avoid repeated freeze/thaw cycles. Store at 4 °C for frequent use. Aliquot and store at -20 °C for 12 months.

Alternative Names:

PLA2G7; PAF-AH; PAFAH; Lp-PLA2; LDL-PLA2; Platelet Activating Factor Acetylhydrolase, Plasma; Phospholipase A2, Group VII; LDL-associated phospholipase A2

SwissProt:

Q60963

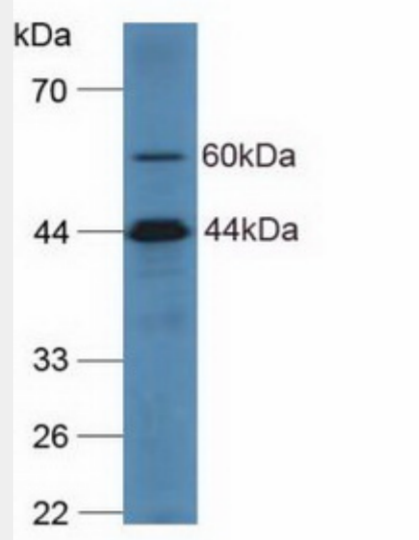
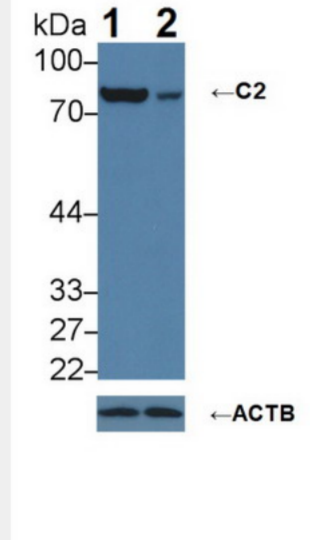


Figure. Western Blot; Sample: Human Hela Cells.)



Knockout Varification: Lane 1: Wild-type A431 cell lysate; Lane 2: C2 knockout A431 cell lysate; Predicted MW: 60,69,83kDa Observed MW: 83kDa Primary Ab: 1µg/ml Rabbit Anti-Human C2 Antibody Second Ab: 0.2µg/mL HRP-Linked Caprine Anti-Rabbit IgG Polyclonal Antibody Catalog: SAA544Rb19)

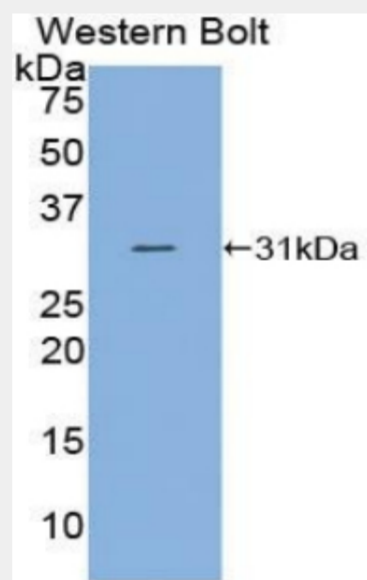


Figure. Western Bolt; Sample: Recombinant C2, Human.)

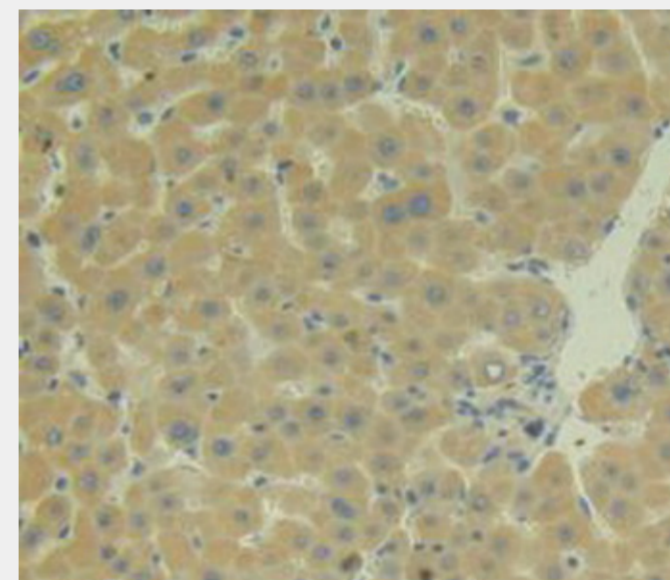


Figure. DAB staining on IHC-P; Samples: Human Liver Tissue.)

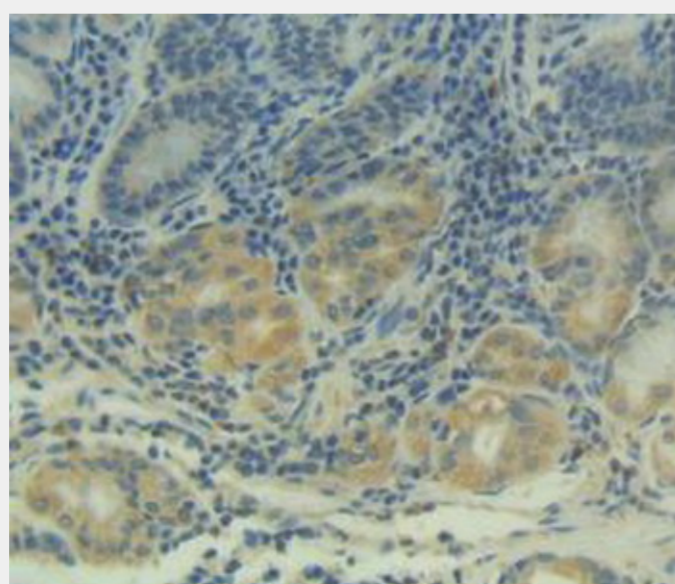


Figure. DAB staining on IHC-P; Samples: Human Stomach Tissue.)

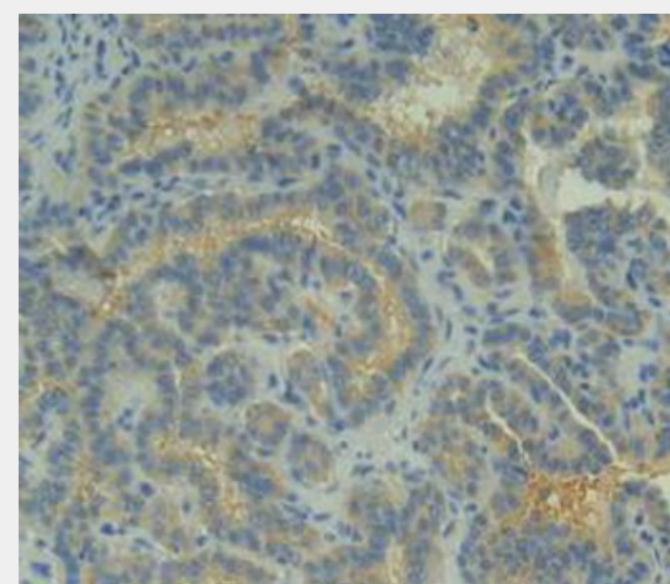


Figure. DAB staining on IHC-P; Samples: Human Thyroid Cancer Tissue.)

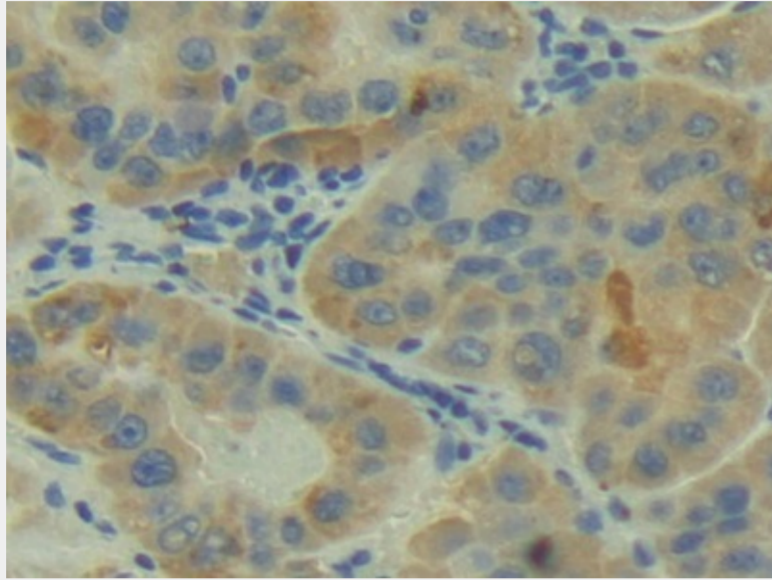


Figure. DAB staining on IHC-P; Samples: Human Liver Cancer Tissue.)

All products are for RESEARCH USE ONLY. Not for diagnostic & therapeutic purposes!