

# APC/CY7 Linked Polyclonal Antibody to Alkaline Phosphatase, Placental (ALPP)

Catalog No: tcua5337APCCY7



## Available Sizes

---

**Size:** 100ug

---



## Specifications

---

**Application:**

WB; IHC; ICC; IP.

---

**Species Reactivity:**

Rabbit

---

**Host Species:**

Rabbit

---

**Immunogen / Amino acids:**

ALPP (Thr68~Ala313)

---

**Conjugation:**

APC/CY7

---

**Clonality:**

Polyclone

---

**Concentration:**

200ug/ml

---

**Storage Instruction:**

Avoid repeated freeze/thaw cycles. Store at 4 °C for frequent use. Aliquot and store at -20 °C for 12 months.

---

**Alternative Names:**

PLAP1; ALP; ALPG; ALPPL; GCAP; Alkaline phosphatase Regan isozyme; Placental alkaline phosphatase 1

---

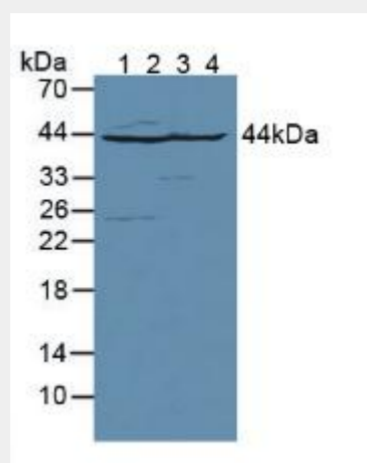


Figure. Western Blot; Sample: Lane1: Rat Brain Tissue; Lane2: Rat Heart Tissue; Lane3: Rat Liver Tissue; Lane4: Rat Kidney Tissue.)

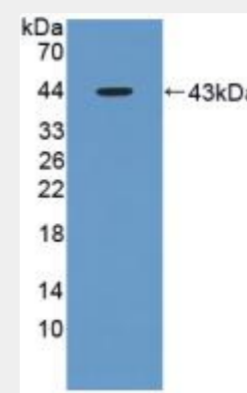


Figure. Western Blot; Sample: Recombinant AST, Rat.)

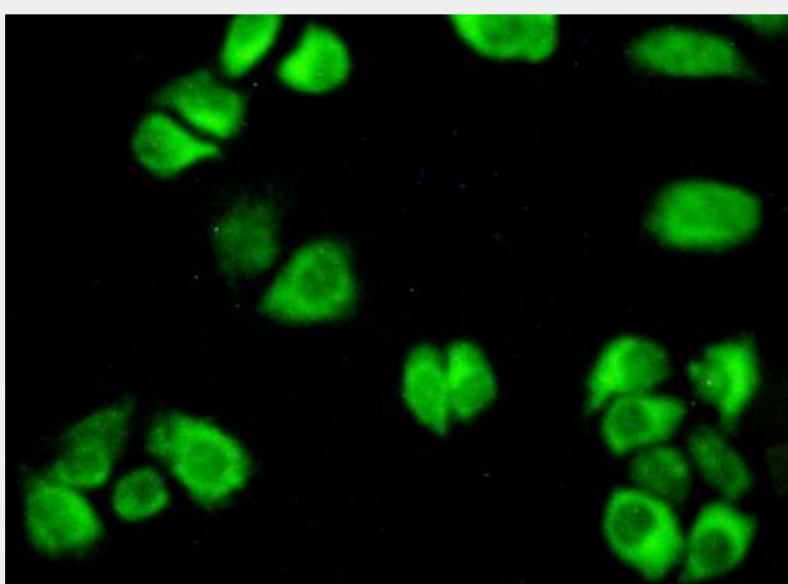


Figure:FITC staining on IHC-P<br/>Simple: hela cells)

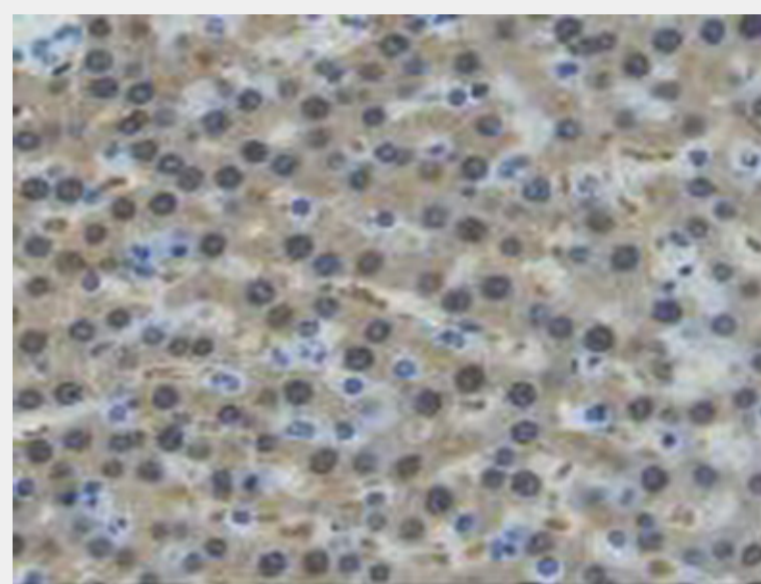


Figure. DAB staining on IHC-P;  
Samples: Rat Liver Tissue.)

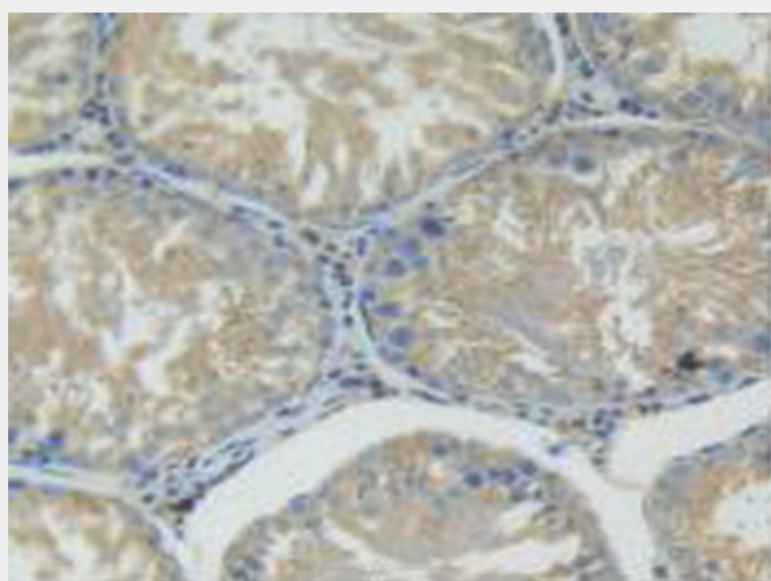


Figure. DAB staining on IHC-P;  
Samples: Rat Testis Tissue.)

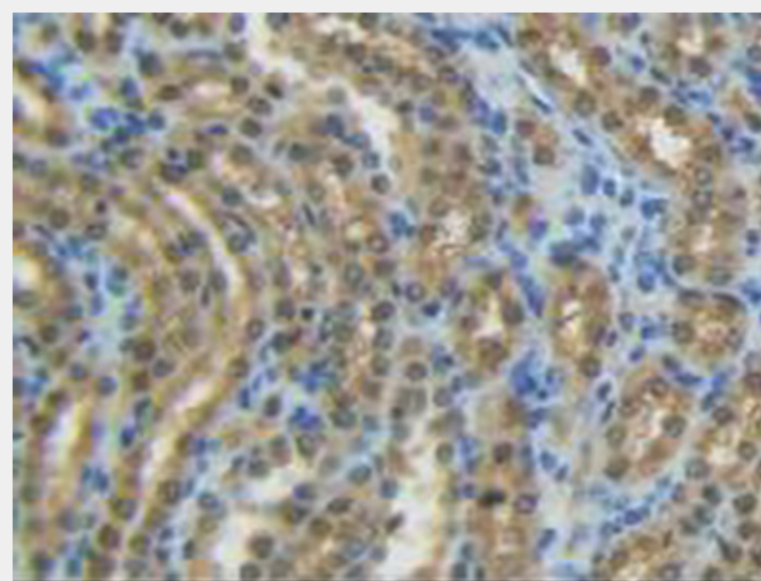


Figure. DAB staining on IHC-P;  
Samples: Rat Kidney Tissue.)

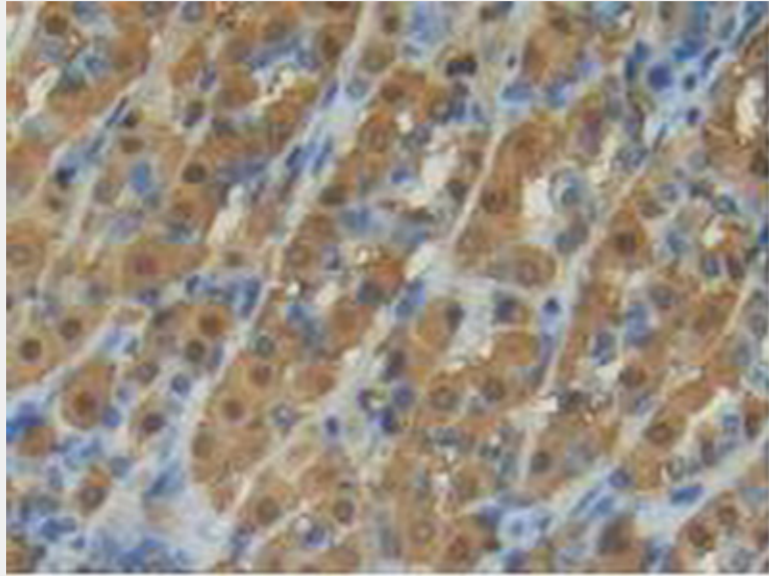


Figure. DAB staining on IHC-P; Samples: Rat Intestine Tissue.)

All products are for RESEARCH USE ONLY. Not for diagnostic & therapeutic purposes!