

APC/CY7 Linked Polyclonal Antibody to Bactericidal/Permeability Increasing Protein (BPI)

Catalog No: tcua5296APCCY7



Available Sizes

Size: 100ug



Specifications

Application:

WB; IHC; ICC; IP.

Species Reactivity:

Rabbit

Host Species:

Rabbit

Immunogen / Amino acids:

BPI (Asn320~Pro452)

Conjugation:

APC/CY7

Clonality:

Polyclone

Concentration:

200ug/ml

Storage Instruction:

Avoid repeated freeze/thaw cycles. Store at 4 °C for frequent use. Aliquot and store at -20 °C for 12 months.

Alternative Names:

CAP 57

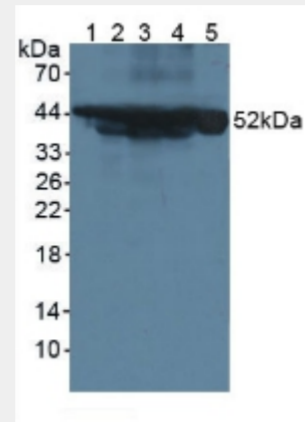
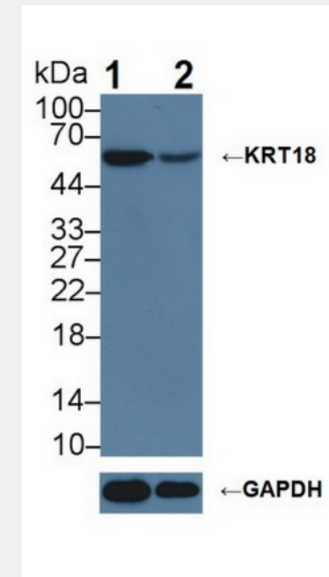


Figure. Western Blot; Sample: Lane1: Mouse Serum; Lane2: Mouse Intestine Tissue; Lane3: Mouse Pancreas Tissue; Lane4: Mouse Liver Tissue; Lane5: Human HeLa Cells.)



Knockout Varification:
Lane 1: Wild-type HeLa cell lysate;
Lane 2: KRT18 knockout HeLa cell lysate;
Predicted MW: 48kDa
Observed MW: 52kDa
Primary Ab: 1µg/ml Rabbit Anti-Mouse KRT18 Antibody
Second Ab: 0.2µg/mL HRP-Linked Caprine Anti-Rabbit IgG Polyclonal Antibody
Catalog: SAA544Rb19)

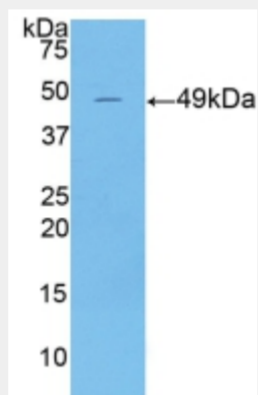


Figure. Western Blot; Sample: Recombinant KRT18, Mouse.)

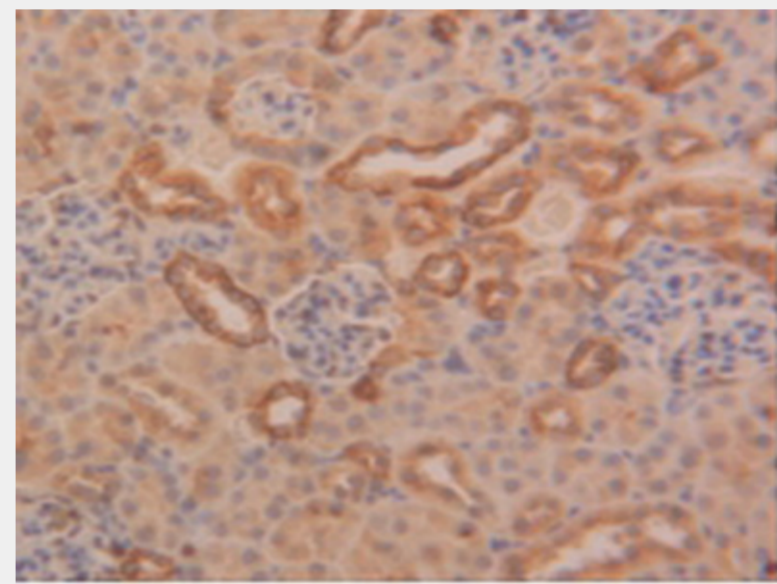


Figure. DAB staining on IHC-P; Samples: Mouse Kidney Tissue.)

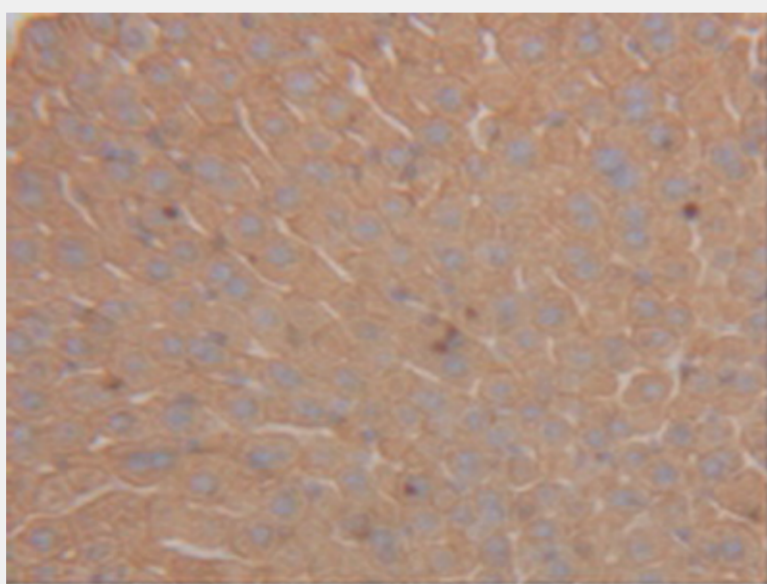


Figure. DAB staining on IHC-P; Samples: Mouse Liver Tissue.)

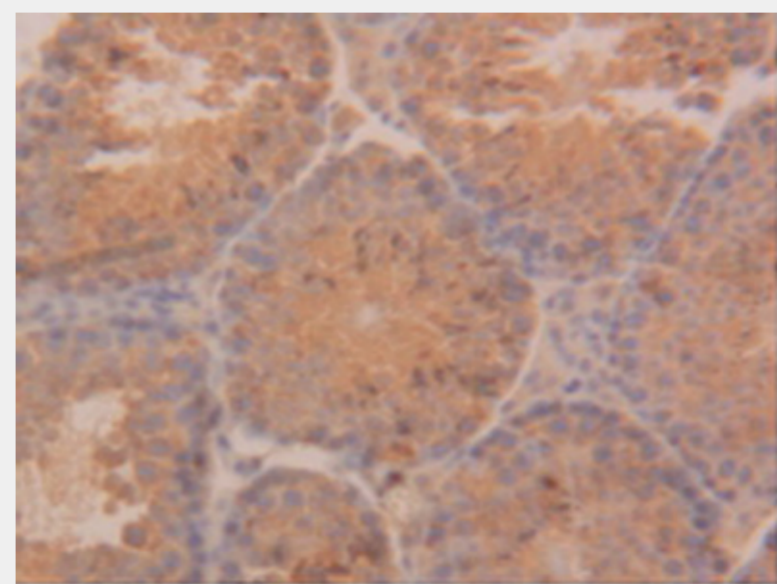


Figure. DAB staining on IHC-P; Samples: Mouse Testis Tissue.)

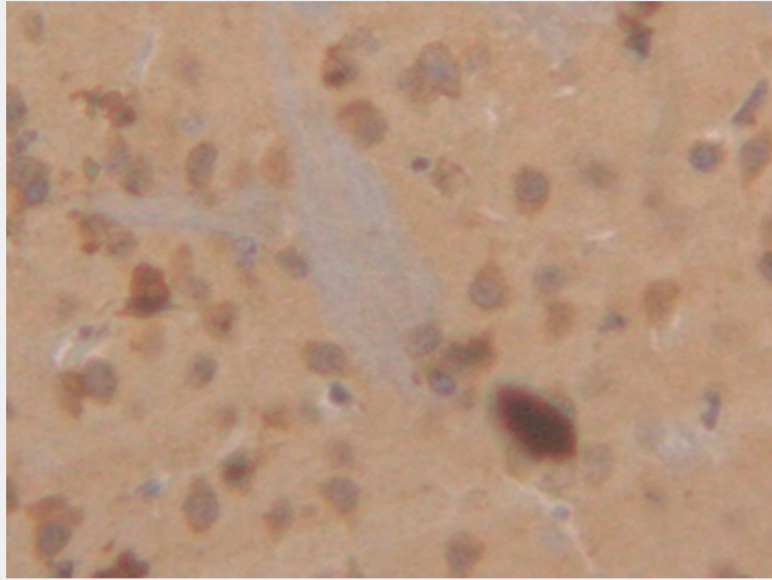


Figure. DAB staining on IHC-P; Samples: Mouse Brain Tissue.)

All products are for RESEARCH USE ONLY. Not for diagnostic & therapeutic purposes!