

APC/CY7 Linked Polyclonal Antibody to Protease, Serine 2 (PRSS2)

Catalog No: tcua4754APCCY7



Available Sizes

Size: 100ug



Specifications

Application:

WB; IHC; ICC; IP.

Species Reactivity:

Rabbit

Host Species:

Rabbit

Immunogen / Amino acids:

PRSS2 (Ile24~Asp241)

Conjugation:

APC/CY7

Clonality:

Polyclone

Concentration:

200ug/ml

Storage Instruction:

Avoid repeated freeze/thaw cycles. Store at 4 °C for frequent use. Aliquot and store at -20 °C for 12 months.

Alternative Names:

TRY2; Trypsin 2; Serine Endopeptidases; Anionic trypsinogen

SwissProt:

P07478

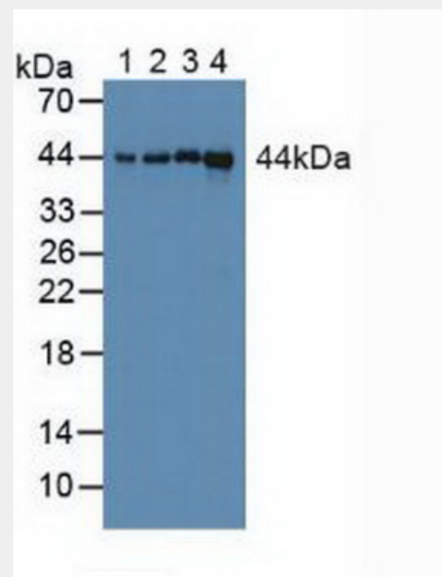


Figure. Western Blot; Sample: Lane1: Human A549 Cells; Lane2: Mouse Spleen Tissue; Lane3: Mouse Brain Tissue; Lane4: Rat Brain Tissue.)

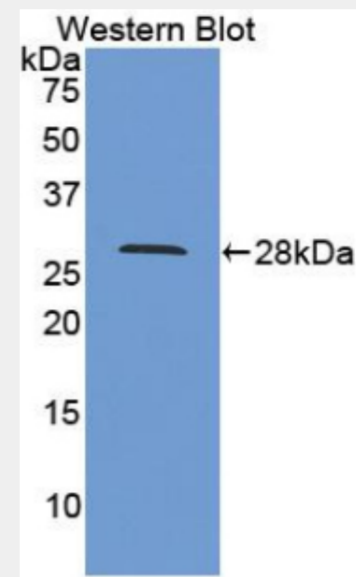


Figure. Western Blot; Sample: Recombinant CYPD, Human.)

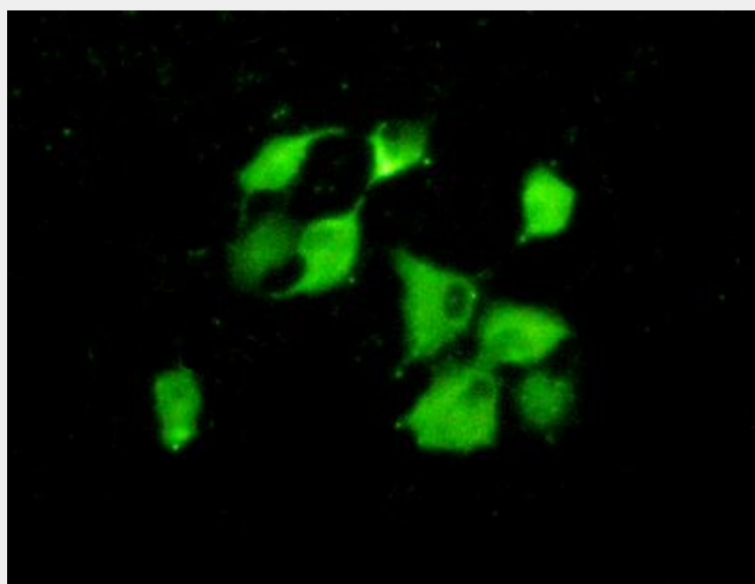


Figure:FITC staining on IHC-P
Simple: A549 cells.)

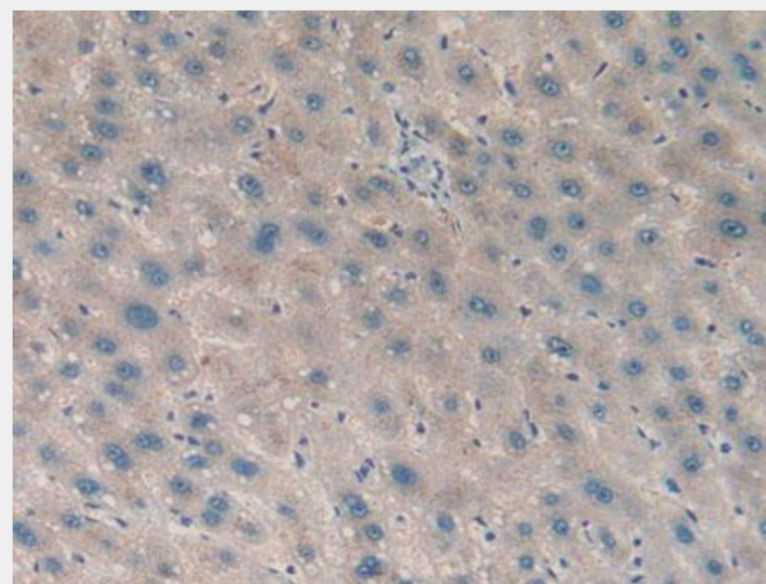


Figure. DAB staining on IHC-P; Samples Human Liver Cancer Tissue.)

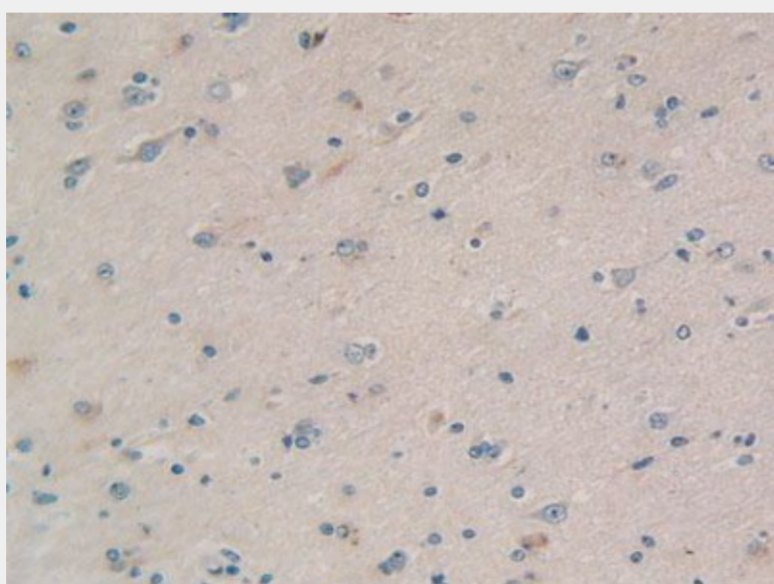


Figure. DAB staining on IHC-P; Samples Human Brain Tissue.)

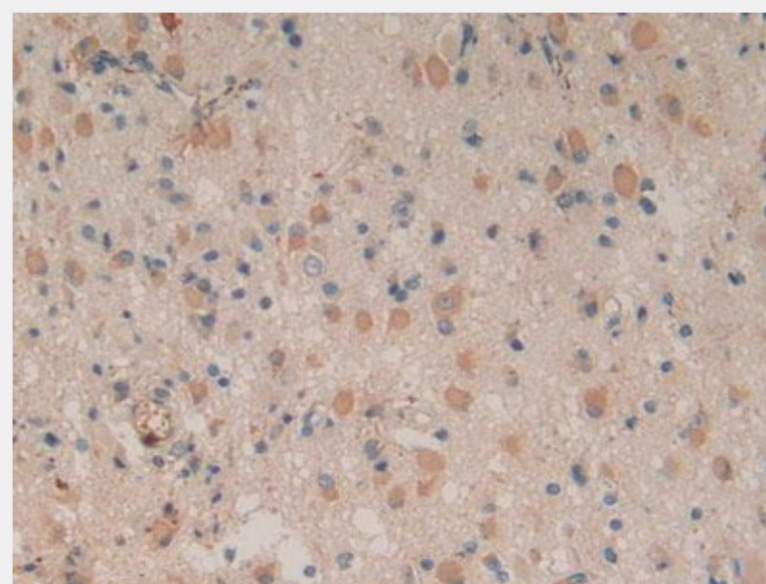


Figure. DAB staining on IHC-P; Samples Human Glioma Tissue.)

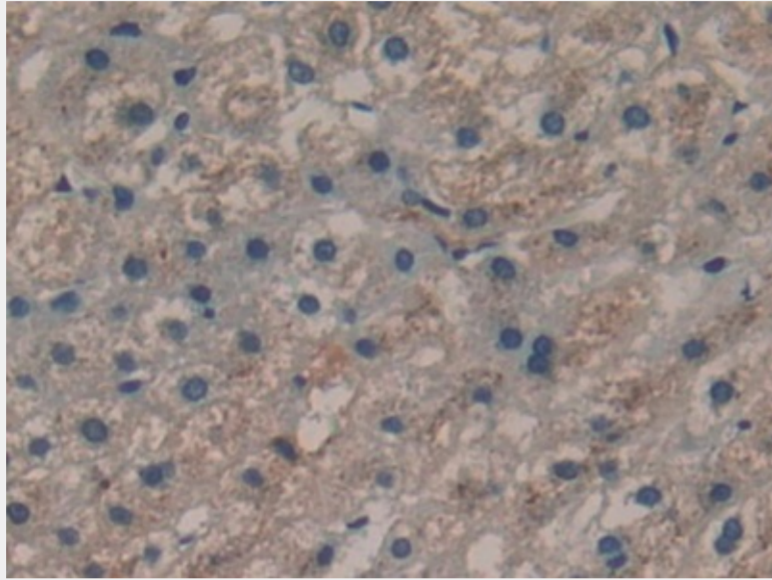


Figure. DAB staining on IHC-P; Samples (Human Liver Tissue.)

All products are for RESEARCH USE ONLY. Not for diagnostic & therapeutic purposes!