

APC/CY7 Linked Polyclonal Antibody to Cortactin (CTTN)

Catalog No: tcua3521APCCY7



Available Sizes

Size: 100ug



Specifications

Application:

WB; IHC; ICC; IP.

Species Reactivity:

Rabbit

Host Species:

Rabbit

Immunogen / Amino acids:

CTTN (Met1~Gln509)

Conjugation:

APC/CY7

Clonality:

Polyclone

Concentration:

200ug/ml

Storage Instruction:

Avoid repeated freeze/thaw cycles. Store at 4 °C for frequent use. Aliquot and store at -20 °C for 12 months.

Alternative Names:

EMS1; Cortical Actin binding Protein; Src substrate cortactin; Amplexin; Oncogene EMS1

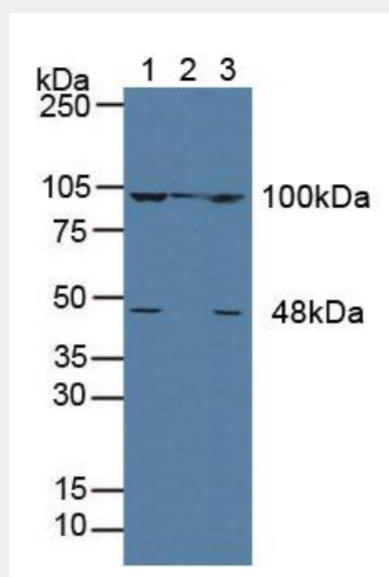
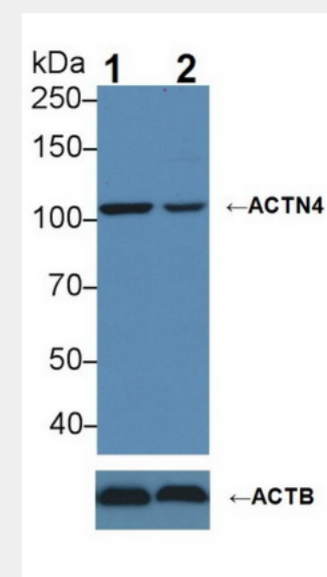


Figure. Western Blot; Lane1: Human MCF-7 Cells; Lane2: Porcine Liver Tissue; Lane3: Human Hela Cells.)



Knockout Varification:
Lane 1: Wild-type MCF7 cell lysate;
Lane 2: ACTN4 knockout MCF7 cell lysate;
Predicted MW: 104,79,59kDa
Observed MW: 104kDa
Primary Ab: 3µg/ml Rabbit Anti-Human ACTN4 Antibody
Second Ab: 0.2µg/mL HRP-Linked Caprine Anti-Rabbit IgG Polyclonal Antibody
Catalog: SAA544Rb19)

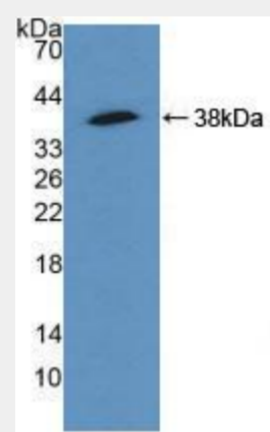


Figure. Western Blot; Sample: Recombinant ACTN4, Human.)

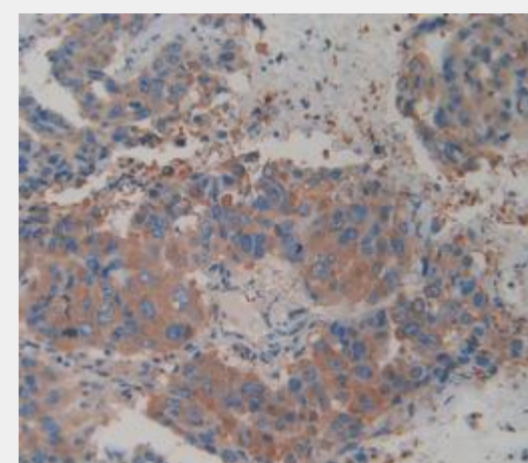


Figure. DAB staining on IHC-P; Samples Human Breast Cancer Tissue.)

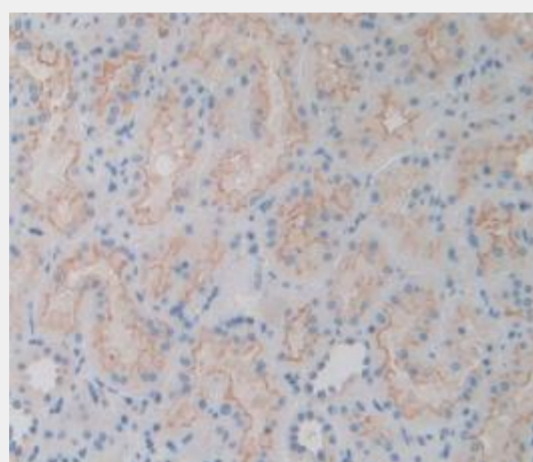


Figure. DAB staining on IHC-P; Samples Human Kidney Tissue.)

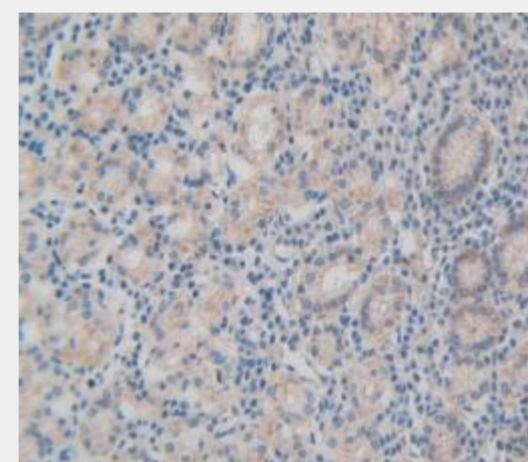


Figure. DAB staining on IHC-P; Samples: Human Stomach Tissue.)

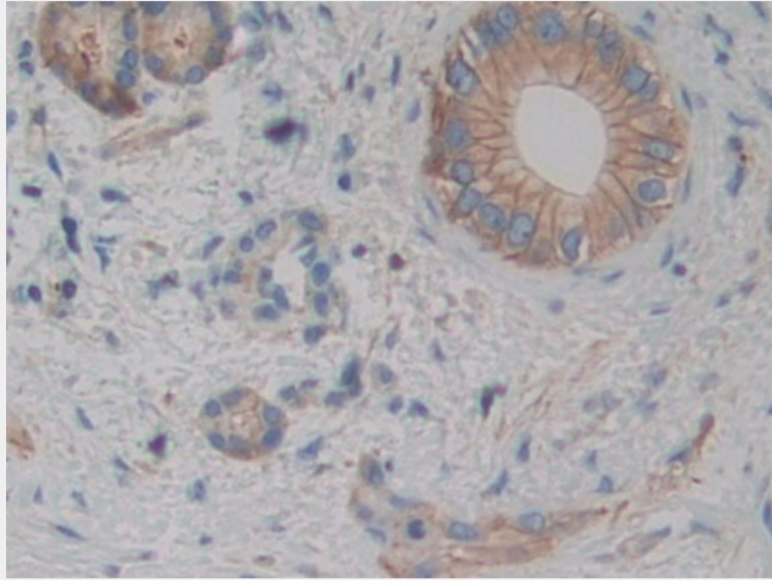


Figure. DAB staining on IHC-P; Samples:Human Cholangiocarcinoma Tissue.)

All products are for RESEARCH USE ONLY. Not for diagnostic & therapeutic purposes!