

APC/CY7 Linked Polyclonal Antibody to Core Binding Factor Beta Subunit (CBFb)

Catalog No: tcua3367APCCY7



Available Sizes

Size: 100ug



Specifications

Application:

WB; IHC; ICC; IP.

Species Reactivity:

Rabbit

Host Species:

Rabbit

Immunogen / Amino acids:

CBFb (Met1~Pro182)

Conjugation:

APC/CY7

Clonality:

Polyclone

Concentration:

200ug/ml

Storage Instruction:

Avoid repeated freeze/thaw cycles. Store at 4 °C for frequent use. Aliquot and store at -20 °C for 12 months.

Alternative Names:

CBF-B; PEBP2B; Polyomavirus enhancer-binding protein 2 beta subunit; SL3-3 enhancer factor 1 subunit beta;
SL3/AKV core-binding factor beta subunit

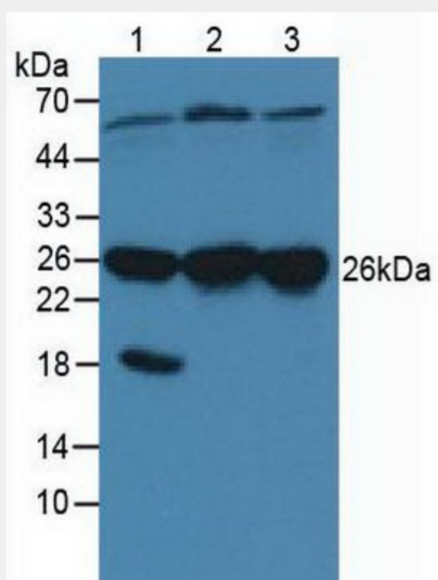


Figure. Western Blot; Sample: Lane1: Porcine Brain Tissue; Lane2: Human HeLa Cells; Lane3: Human A431 Cells.)

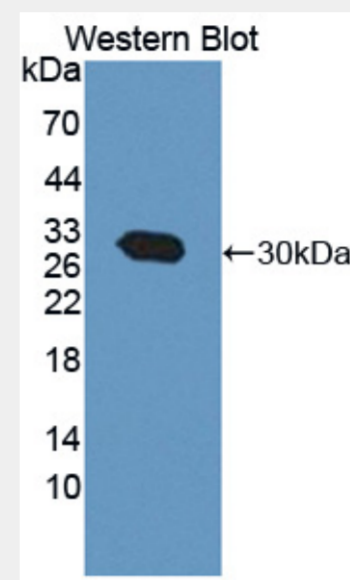


Figure. Western Blot; Sample: Recombinant CACYBP, Human.)

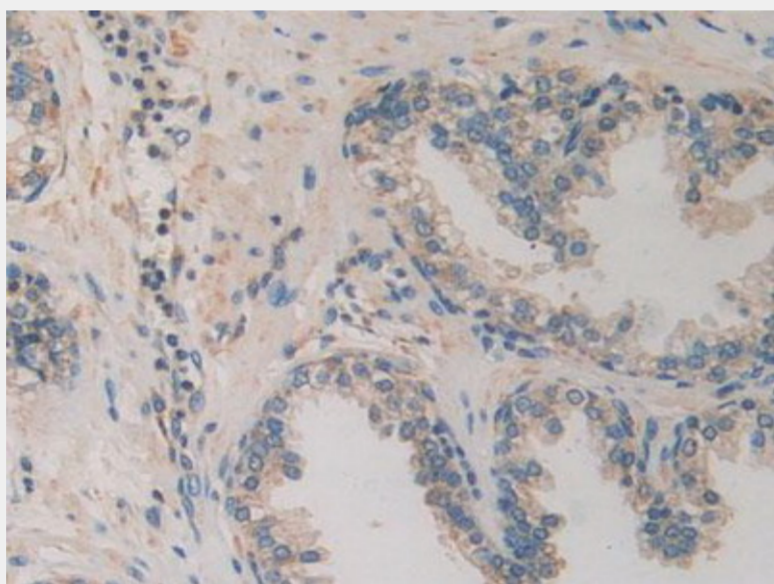


Figure. DAB staining on IHC-P; Samples: Human Prostate Gland Tissue.)

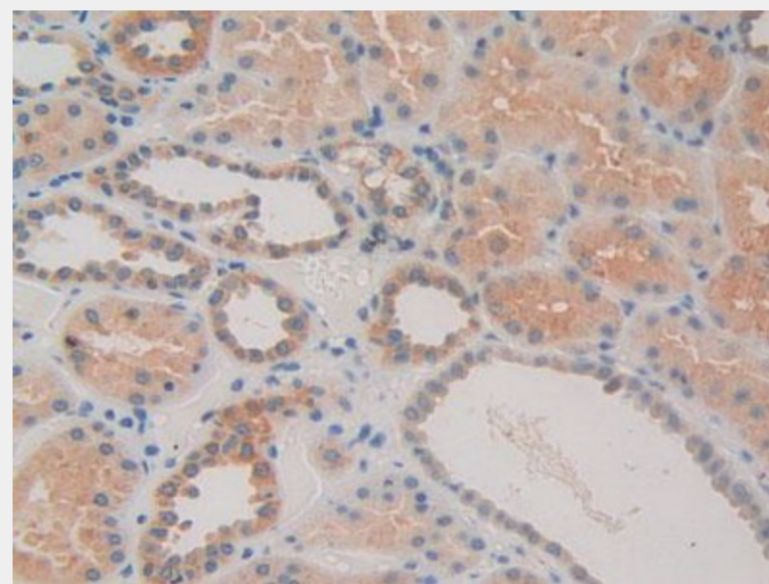


Figure. DAB staining on IHC-P; Samples: Human Kidney Tissue.)

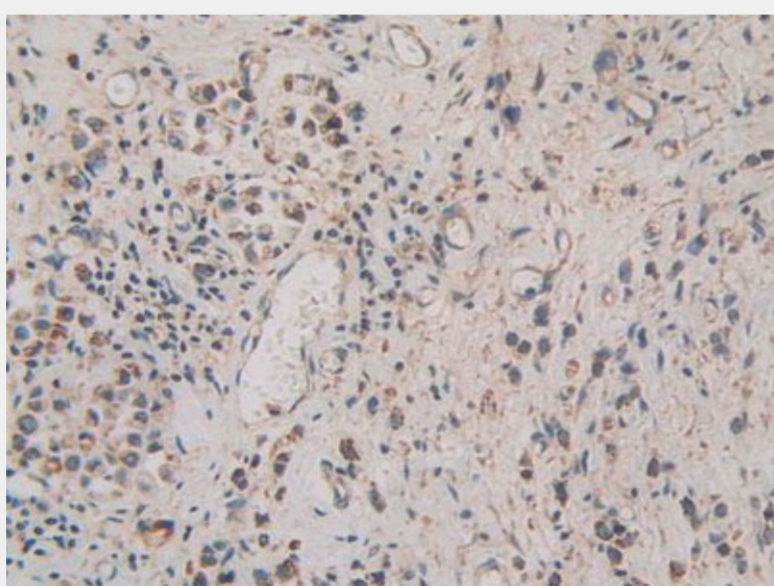


Figure. DAB staining on IHC-P; Samples: Human Stomach Cancer Tissue.)

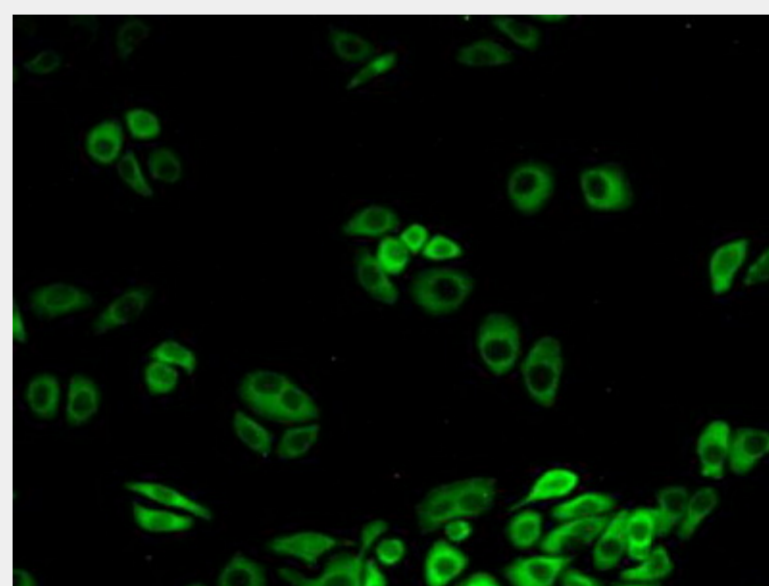


Figure. FITC staining on IHC-P; Samples: Human HeLa Cells.)

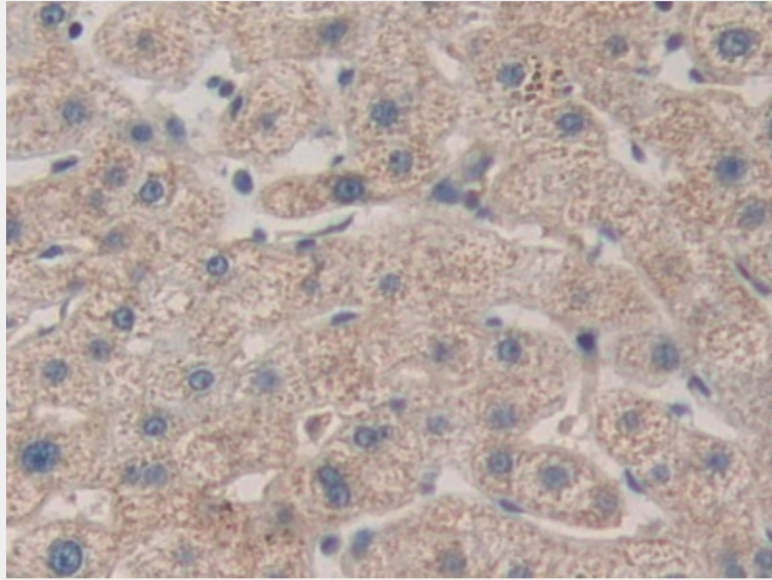


Figure. DAB staining on IHC-P; Samples: Human Liver Tissue.)

All products are for RESEARCH USE ONLY. Not for diagnostic & therapeutic purposes!