

AF647 Anti-Mouse F4/80 Antibody[Cl:A3-1]

Catalog No: tcea612976



Available Sizes

Size: 100 tests

Size: 500tests



Specifications

Species Reactivity:

Mouse

Host Species:

Rat

Conjugation:

AF647

Clones:

Cl:A3-1

Isotype:

IgG2b, κ

Form:

Liquid

Storage Buffer:

PBS with 0.05% Proclin300, 1% BSA

Recommended Dilution:

Each lot of this antibody is quality control tested by immunofluorescent staining with flow cytometric analysis. The amount of the reagent is suggested to be used 5 μ L of antibody per test (million cells in 100 μ L staining volume or per 100 μ L of whole blood). Please check your vial before the experiment. Since applications vary the appropriate dilutions must be determined for individual use.

Tested Application:

FCM

Storage Instruction:

Store at 2~8°C and protected from prolonged exposure to light. Do not freeze.

Alternative Names:

Adhesion G protein-coupled receptor E1, Adgre1, Cell surface glycoprotein F4/80, EGF-like module receptor 1, Adgre1, Emr1, Gpf480

SwissProt:

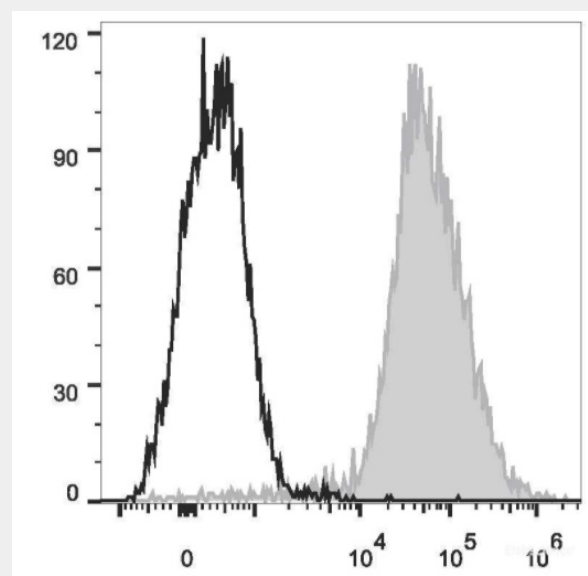
Q61549

References

1. Austy JM and Gordon S. 1981. Eur. J. Immunol. 11:805. 2. Hume DA, et al. 1983. J. Exp. Med. 158:1522. 3. Ruedl C, et al. 1996. Eur. J. Immunol. 26:1801. 4. McKnight AJ, et al. 1996. J. Biol. Chem. 271:486. 5. Lin HH, et al. 2005. J. Exp. Med. 201:1615.

Product Description

F4/80 is a 160 kD glycoprotein. It is characterized as a member of the epidermal growth factor (EGF)-transmembrane 7 (TM7) family. F4/80, also known as EMR1 or Ly71, has been widely used as a murine macrophage marker, which is expressed on the majority of tissue macrophages including peritoneal macrophages, macrophages in lung, gut, thymus and red pulp of spleen (but not on the macrophages located in T cell areas of the spleen, lymph node and Peyer's patch), Kuffer cells, Langerhans cells, and bone marrow stromal cells. F4/80 has also been shown on a subset of dendritic cells. The biological ligand of F4/80 has not been identified, but it has been reported that F4/80 is required for induction of CD8+ T cells-mediated peripheral tolerance.



Mouse abdominal macrophages elicited by starch broth are stained with AF647 Anti-Mouse F4/80 Antibody (filled gray histogram). Unstained macrophages (blank black histogram) are used as control.

All products are for RESEARCH USE ONLY. Not for diagnostic & therapeutic purposes!