

SCLC-21H Cell Line

Catalog No: tccc302206



Available Sizes

Size: 1x10⁶ Cells/Vial



Specifications

Host Species:

Homo sapiens (human)

Form:

Frozen cells

Protocol:

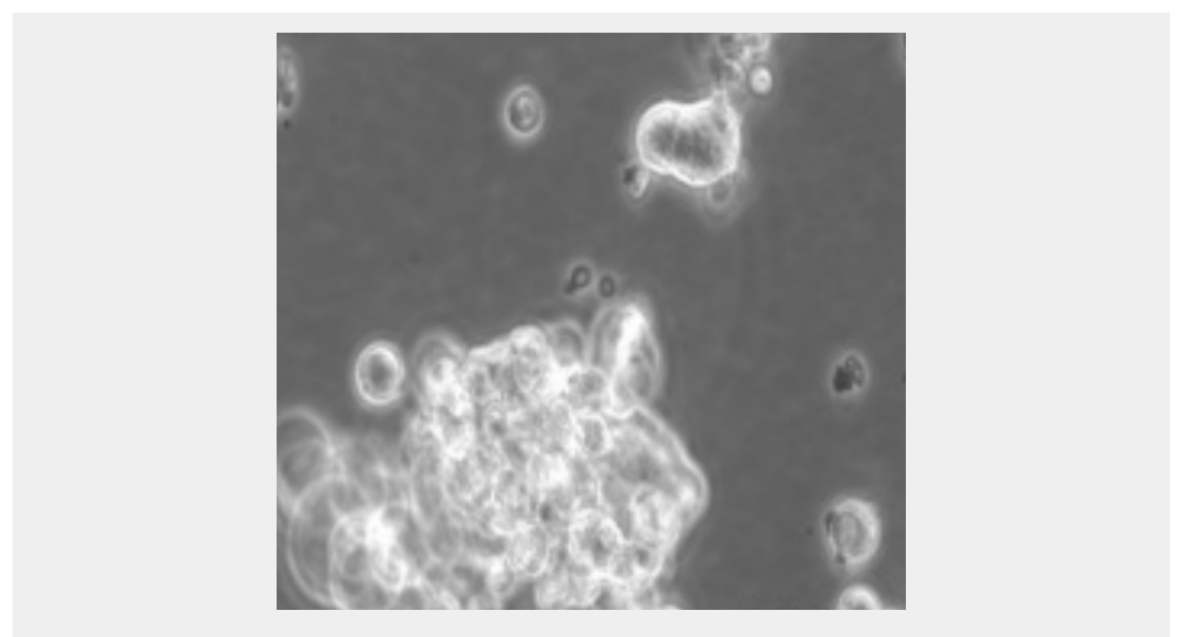
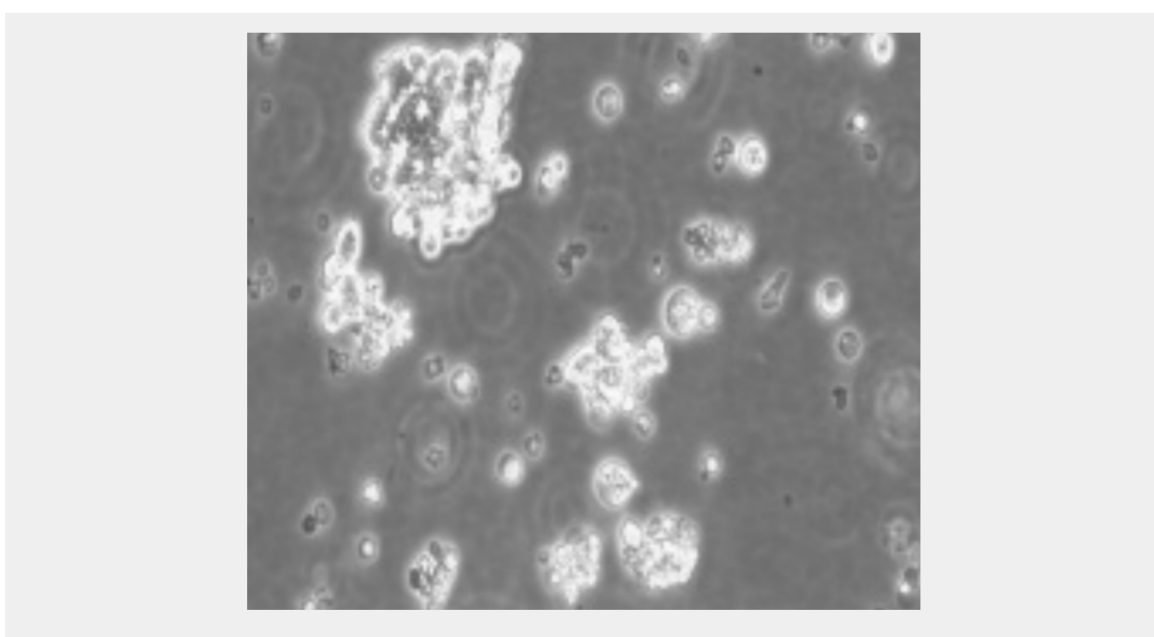
Seeding Density: Start cultures at 2-4x10⁴ cells/ml Fluid Renewal: 2 to 3 times weekly Doubling Time: 45 hrs

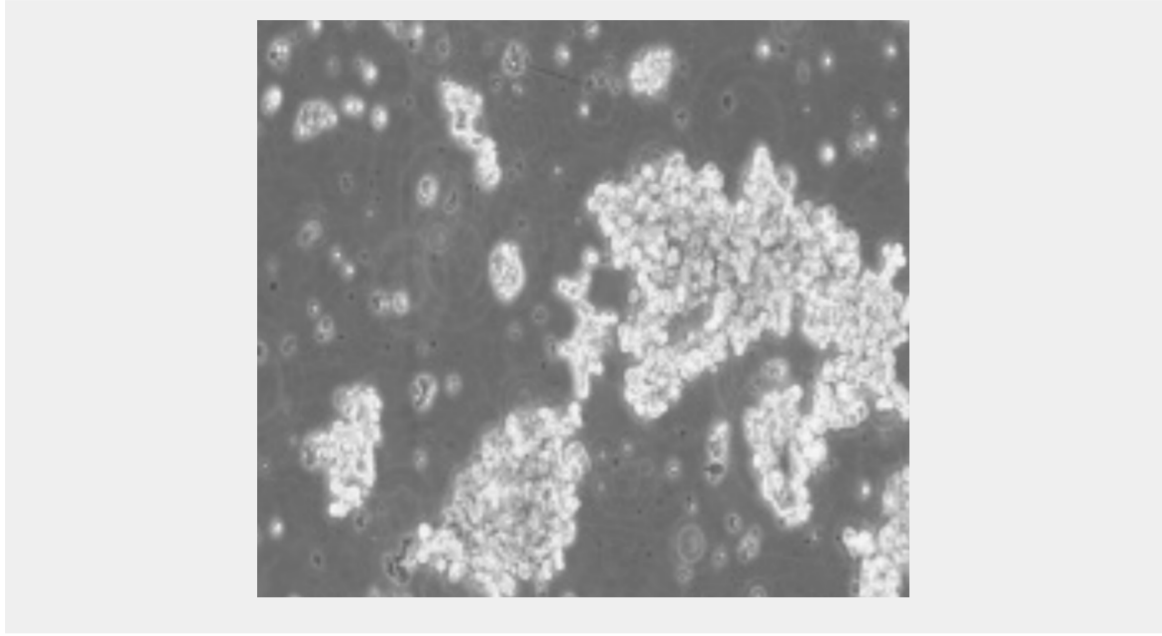
Subculturing:

Once or twice a week add 5 ml of fresh cell culture medium, as soon as the culture medium gets acidic. Subculture as soon as many very large clusters are observed. Dissociate the clusters by collecting the cells, rinsing once using PBS without calcium/magnesium and adding 3-5 ml Accutase. Incubate for 10 minutes at 37°C. Collect the cells following centrifugation, resuspend in fresh cell culture medium and count

Product Description

Human Lung small cell carcinoma cell line SCLC-21H





All products are for RESEARCH USE ONLY. Not for diagnostic & therapeutic purposes!