

APC/CY7 Linked Polyclonal Antibody to Calponin 1, Basic (CNN1)

Catalog No: tcua723APCCY7



Available Sizes

Size: 100ug



Specifications

Application:

WB; IHC; ICC; IP.

Species Reactivity:

Rabbit

Host Species:

Rabbit

Immunogen / Amino acids:

CNN1 (Met1~Tyr268)

Conjugation:

APC/CY7

Clonality:

Polyclone

Concentration:

200ug/ml

Storage Instruction:

Avoid repeated freeze/thaw cycles. Store at 4 °C for frequent use. Aliquot and store at -20 °C for 12 months.

Alternative Names:

SMCC; Sm-Calp; Smooth Muscle Cell Calponin

SwissProt:

P51911

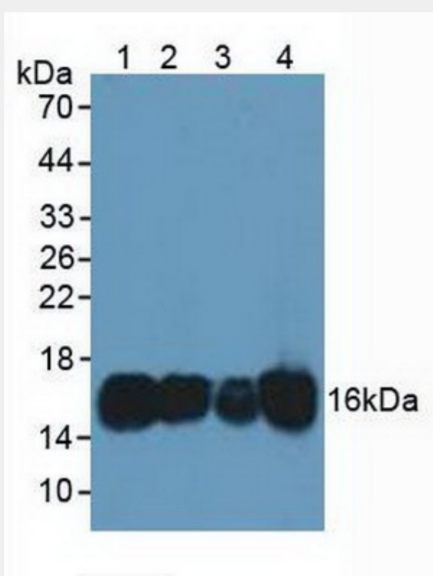


Figure. Western Blot; Sample: Lane1: Human Lung Tissue; Lane2: Human Hela Cells; Lane3: Mouse Placenta Tissue; Lane4: Mouse Kidney Tissue.)

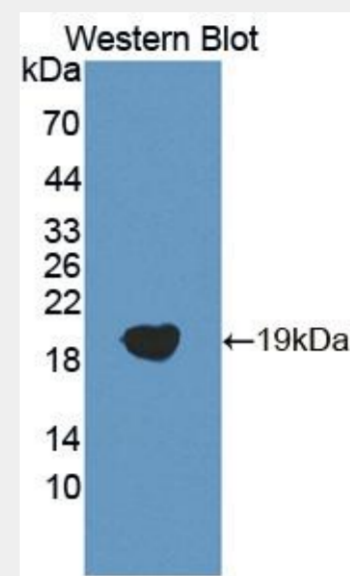


Figure. Western Blot ; Sample: Recombinant COTL1, Human.)

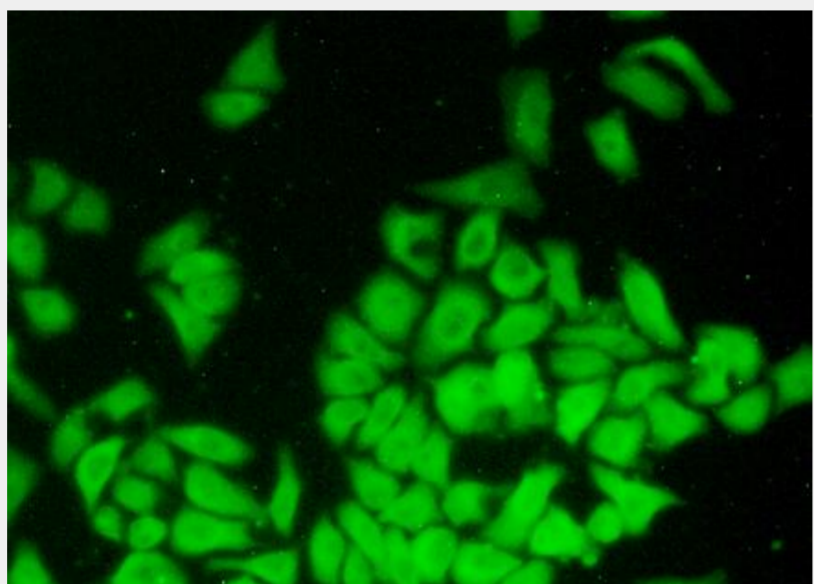


Figure:FITC staining on IHC-P
Simple: Hela cells)

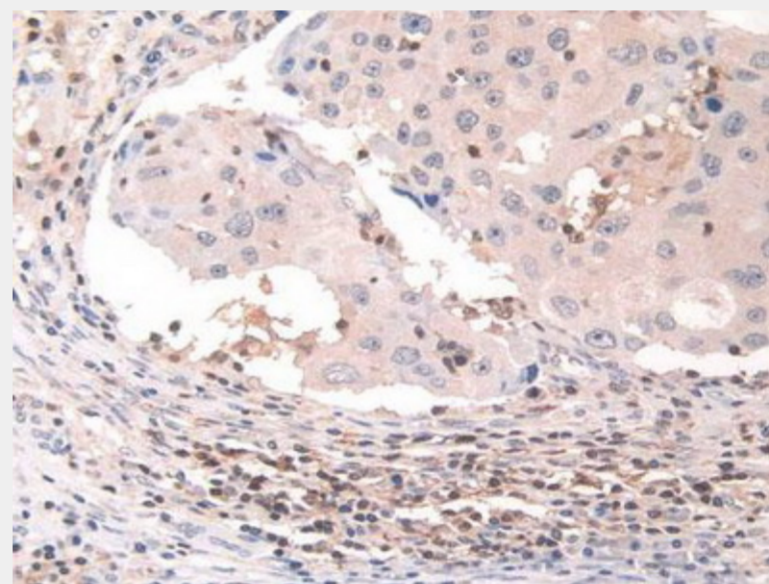


Figure. DAB staining on IHC-P; Samples: Human Breast Cancer Tissue.)

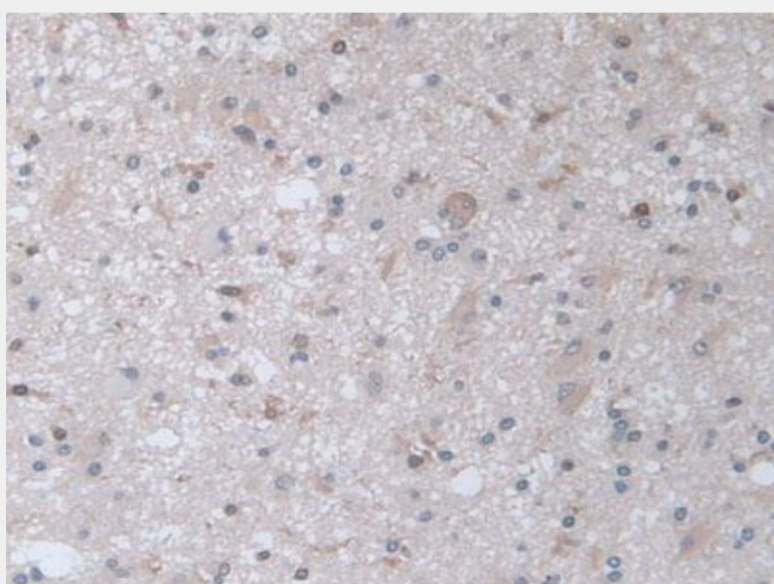


Figure. DAB staining on IHC-P; Samples: Human Glioma Tissue.)

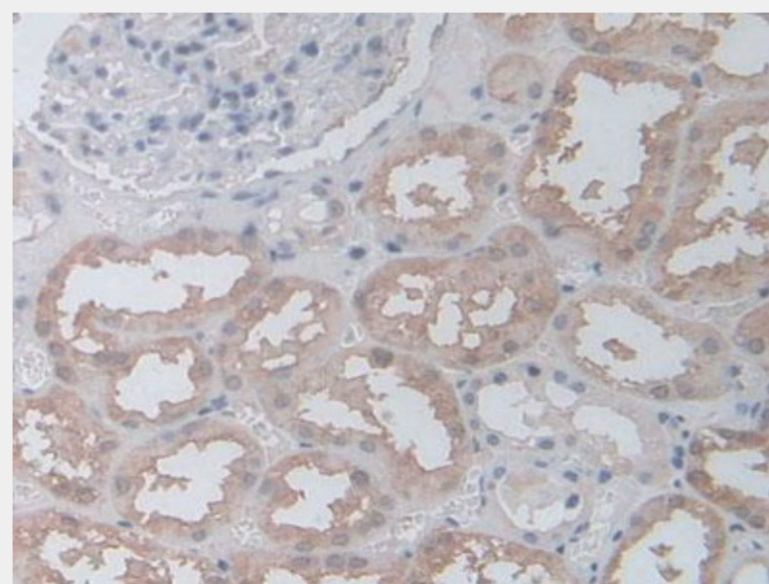


Figure. DAB staining on IHC-P; Samples: Human Kidney Tissue.)

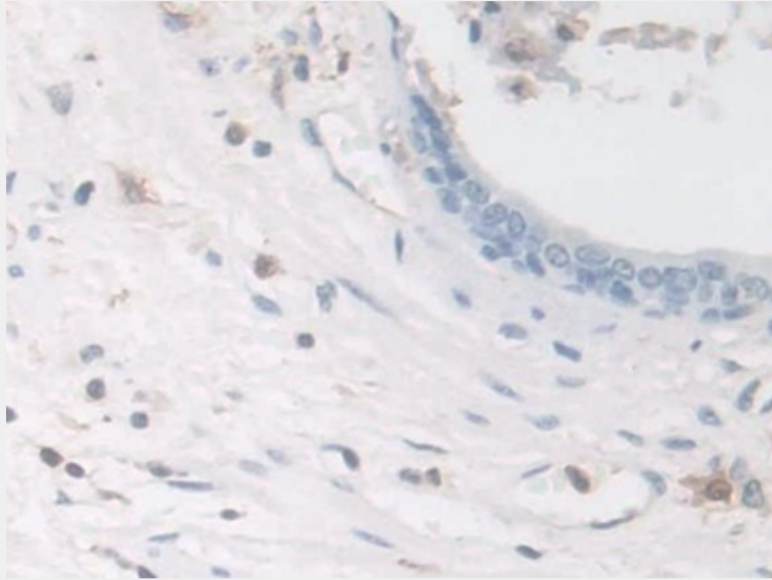


Figure. DAB staining on IHC-P; Samples: Human Prostate Gland Tissue.)

All products are for RESEARCH USE ONLY. Not for diagnostic & therapeutic purposes!