

TM4

Catalog No: tcel456



Available Sizes

Size: 1×10⁶cells/t25culturebottle



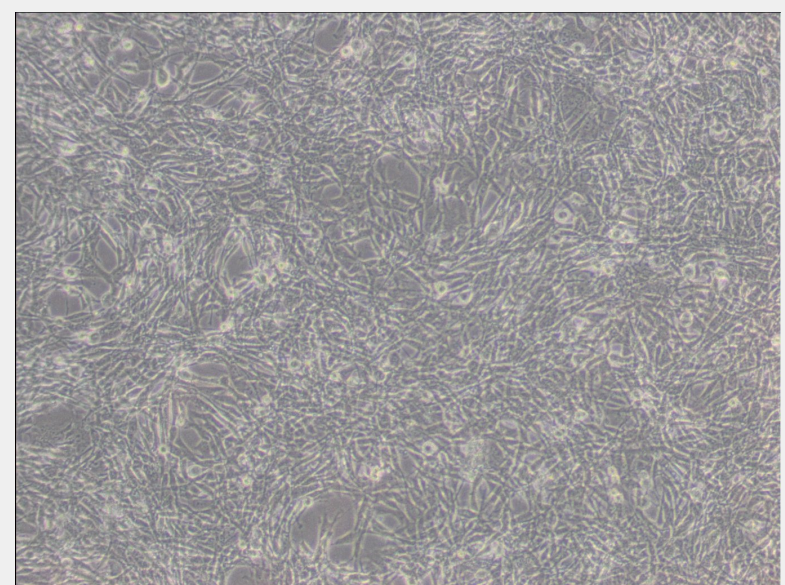
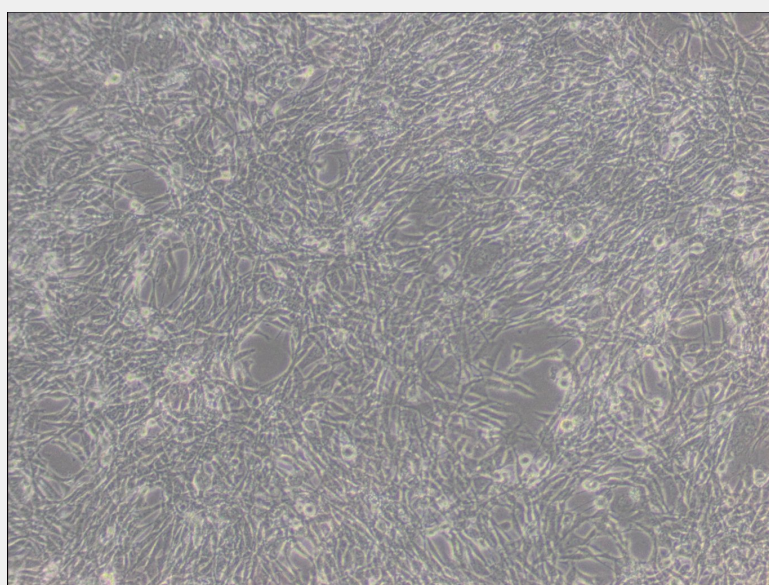
Specifications

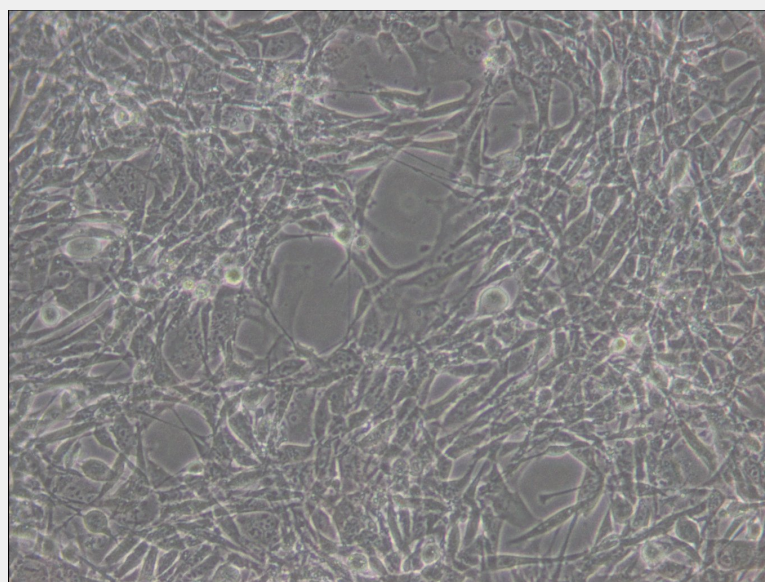
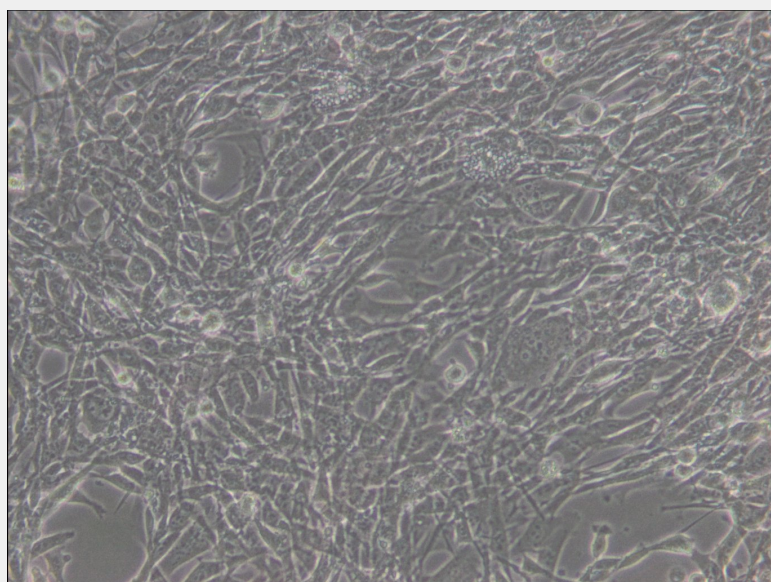
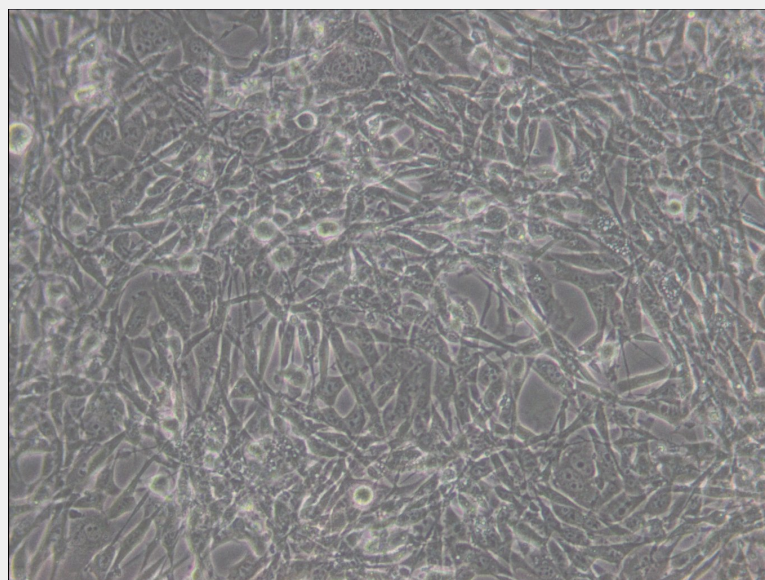
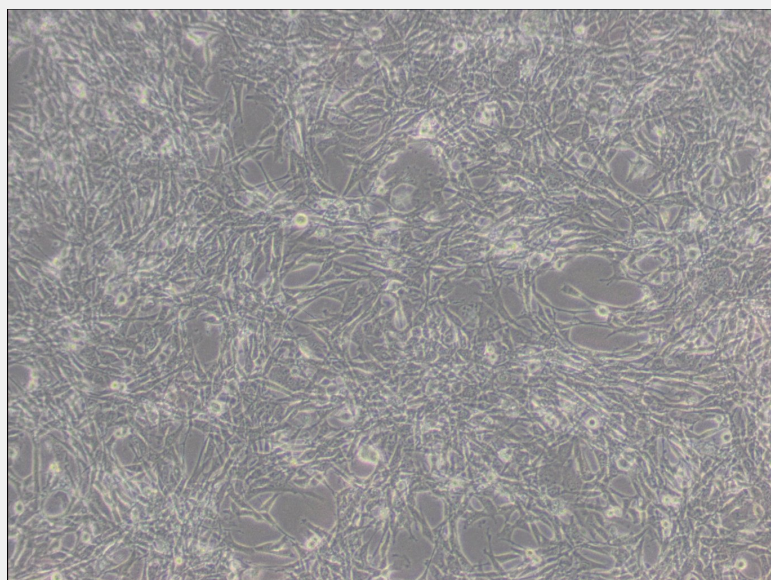
Subculturing:

Remove and discard culture medium. Briefly rinse the cell layer with DPBS solution to remove all traces of serum that contains trypsin inhibitor. Add 1.0 to 2.0 mL of Trypsin-EDTA solution to flask and observe cells under an inverted microscope until cell layer is dispersed (usually within 2 to 3 minutes). Cells that are difficult to detach may be placed at 37°C to facilitate dispersal. Add 4.0 to 6.0 mL of complete growth medium and aspirate cells by gently pipetting. Add appropriate aliquots of the cell suspension to new culture vessels.

Product Description

The TM4 cell line is reported to respond to FSH with an increase in cAMP production, but to not respond to luteinizing hormone(LH). The FSH responsiveness is much reduced compared to primary sertoli cell cultures. Constitutive plasminogen activator production is reported to be low, but is stimulated by FSH and, to a greater extent, by retinoic acid. Tested and found negative for ectromelia virus(mousepox).





All products are for RESEARCH USE ONLY. Not for diagnostic & therapeutic purposes!