

SK-MEL-1

Catalog No: tcel440



Available Sizes

Size: 1×10⁶cells/t25culturebottle



Specifications

Application:

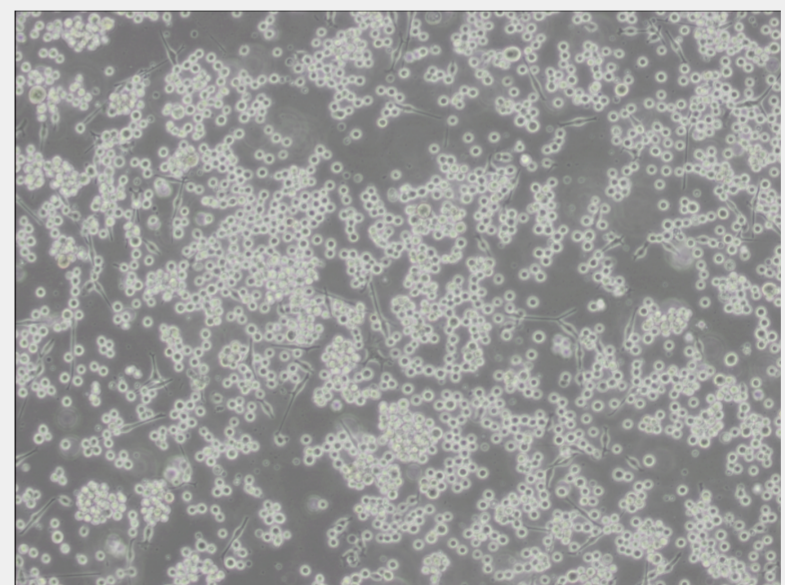
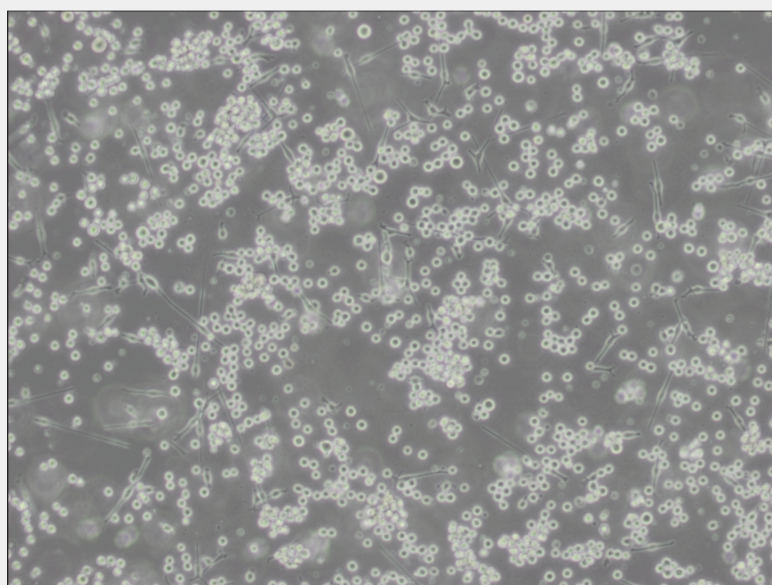
Antibody to this line was detected in 63% of patients with malignant melanoma and in 10% of patients with other diseases. Electron microscopy revealed pigment granules relating both to synthesis and to phagocytosis.

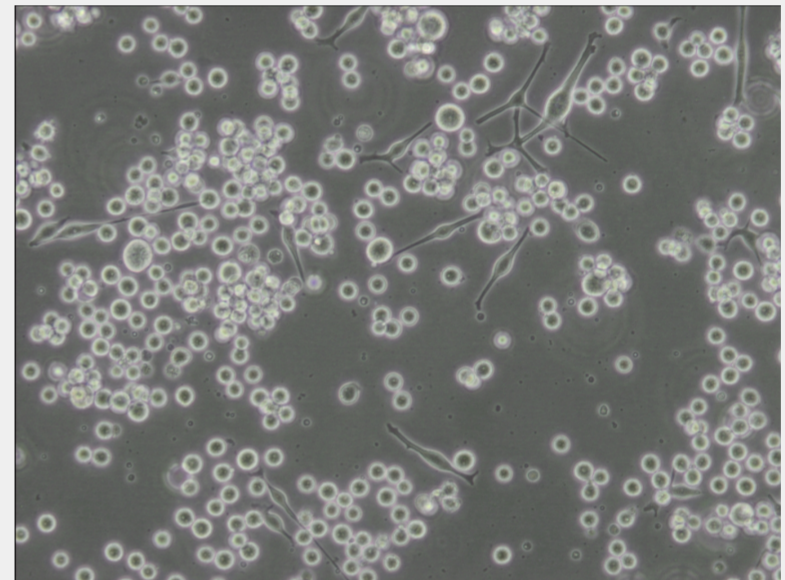
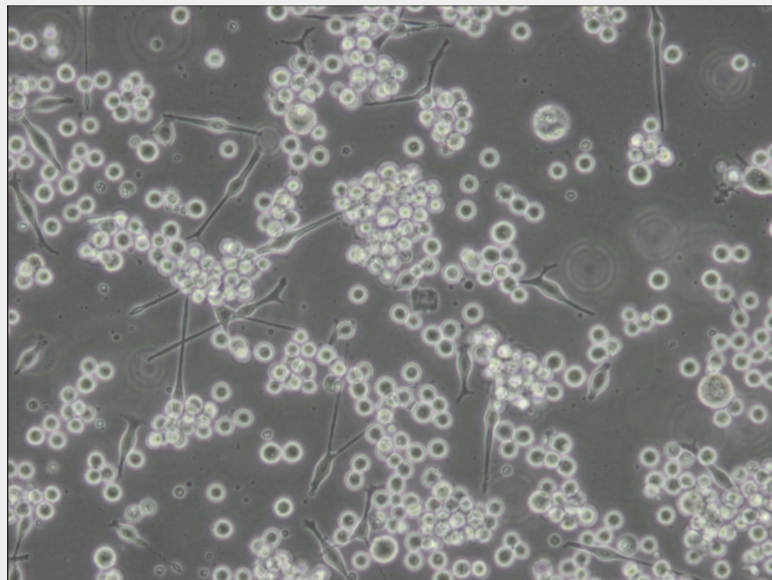
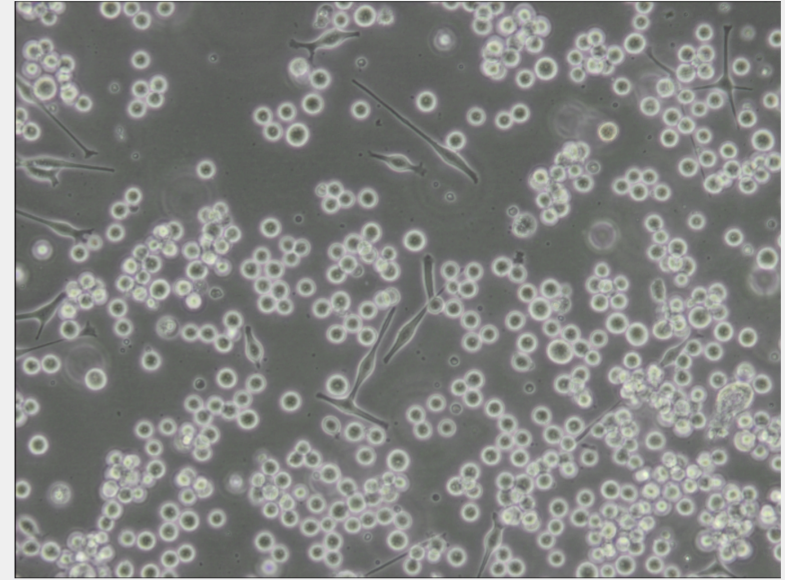
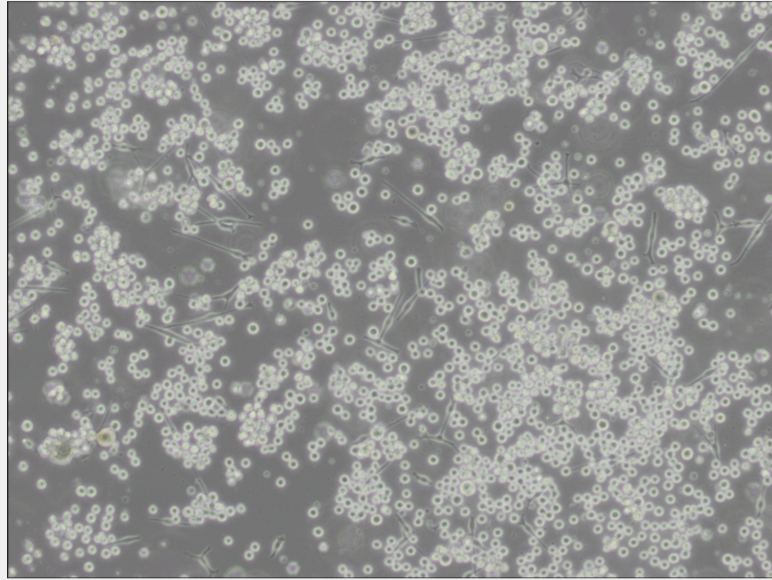
Subculturing:

Cultures can be maintained by the addition of fresh medium or replacement of medium. Alternatively, cultures can be established by centrifugation with subsequent resuspension at the subcultivation ratio of 1:2-1:4.

Product Description

Electron microscopy revealed pigment granules relating both to synthesis and to phagocytosis. Antibody to this line was detected in 63% of patients with malignant melanoma and in 10% of patients with other diseases.





All products are for RESEARCH USE ONLY. Not for diagnostic & therapeutic purposes!