

CEM / C1

Catalog No: tcel328



Available Sizes

Size: 1×10⁶cells/t25culturebottle



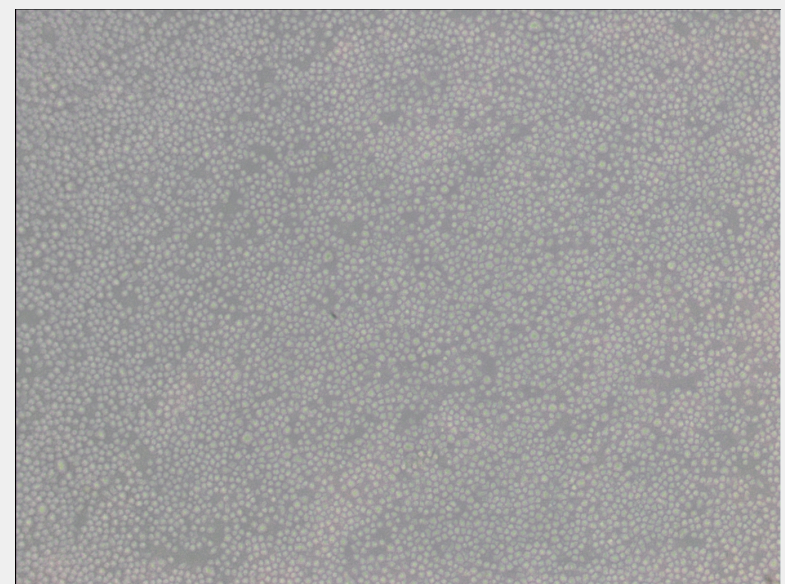
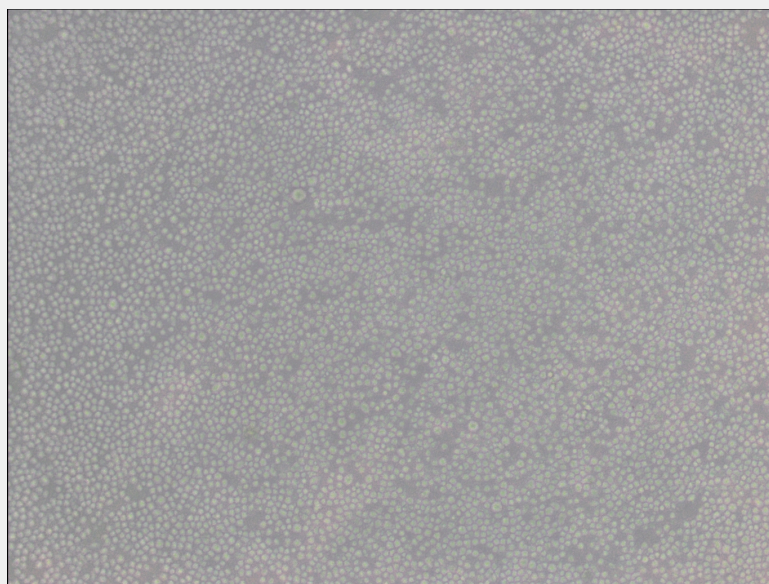
Specifications

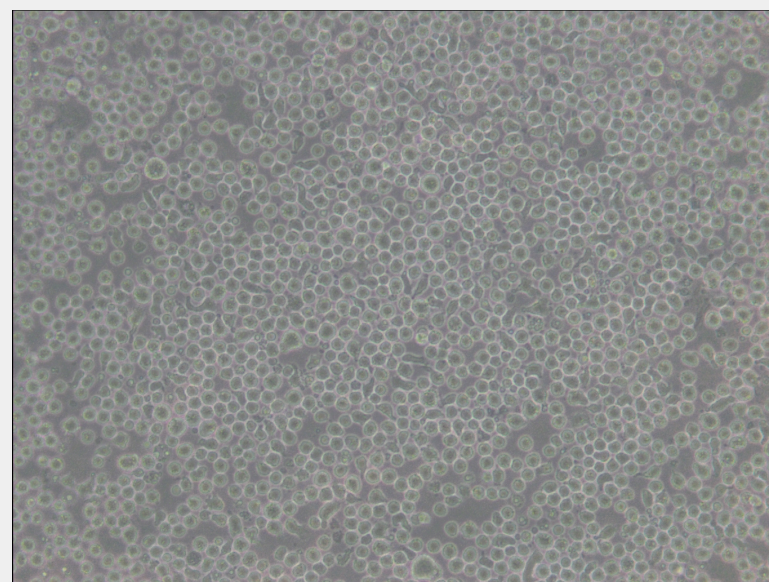
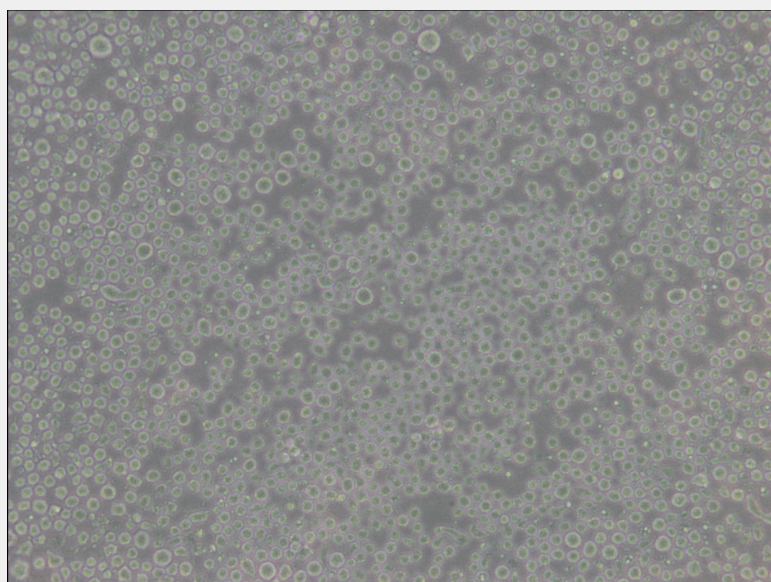
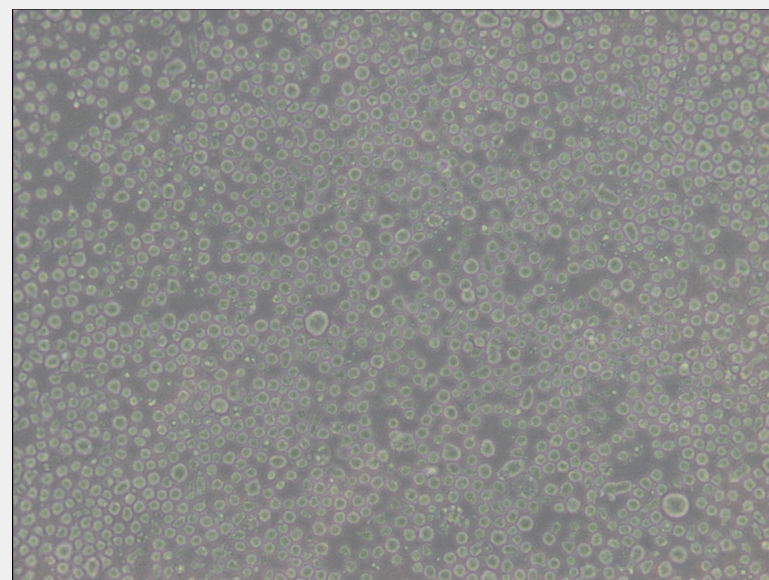
Subculturing:

Cultures can be maintained by the addition of fresh medium or replacement of medium. Alternatively, cultures can be established by centrifugation with subsequent resuspension at the subcultivation ratio of 1:2-1:4.

Product Description

This cell line exhibits cross resistance to both the water soluble(topotecan) and water insoluble(9-amino-CPT and 10,11-methylenedioxy-CPT) analogs of CPT.CEM/C1 cells are approximately 31 fold less sensitive to CPT than the parental CEM cells.CEM/C1 cells display atypical multidrug resistance(MDR) and altered topoisomerase I catalytic activity.Resistance to CPT is stable for up to six months.





All products are for RESEARCH USE ONLY. Not for diagnostic & therapeutic purposes!