

# MDA-MB-468

Catalog No: tcel290



## Available Sizes

**Size:** 1×10<sup>6</sup>cells/t25culturebottle



## Specifications

### Application:

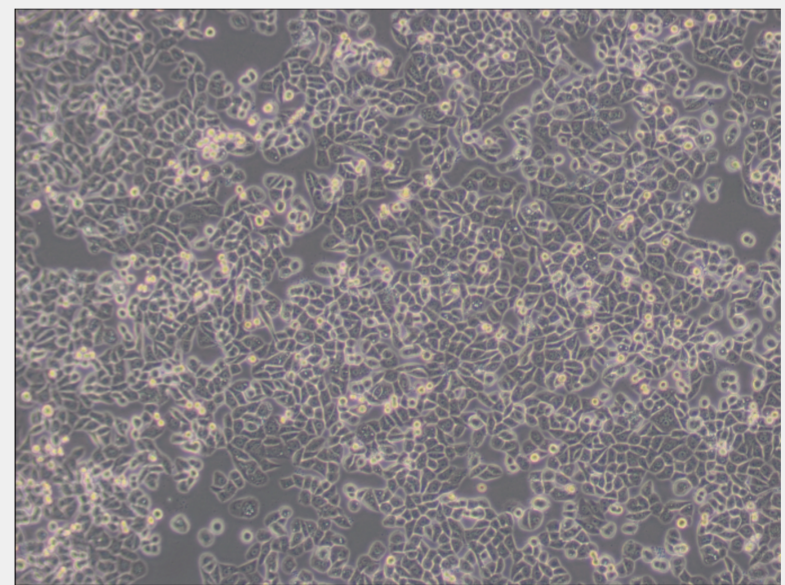
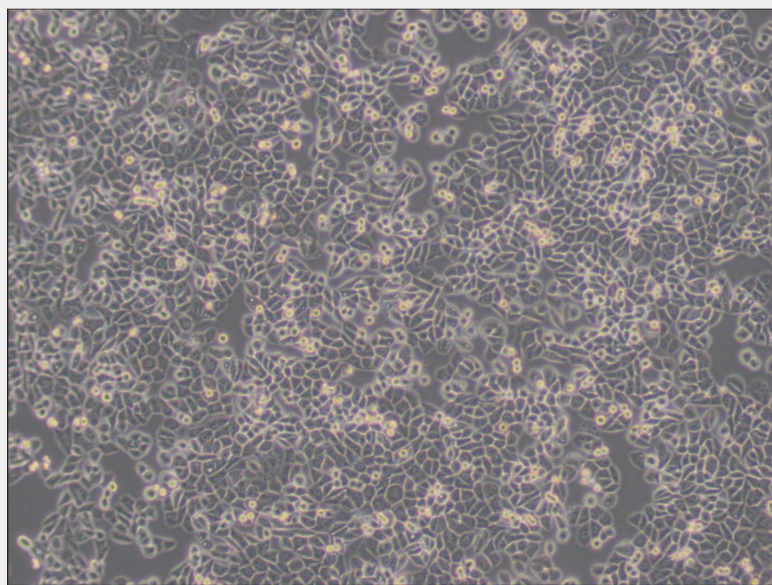
transfection host

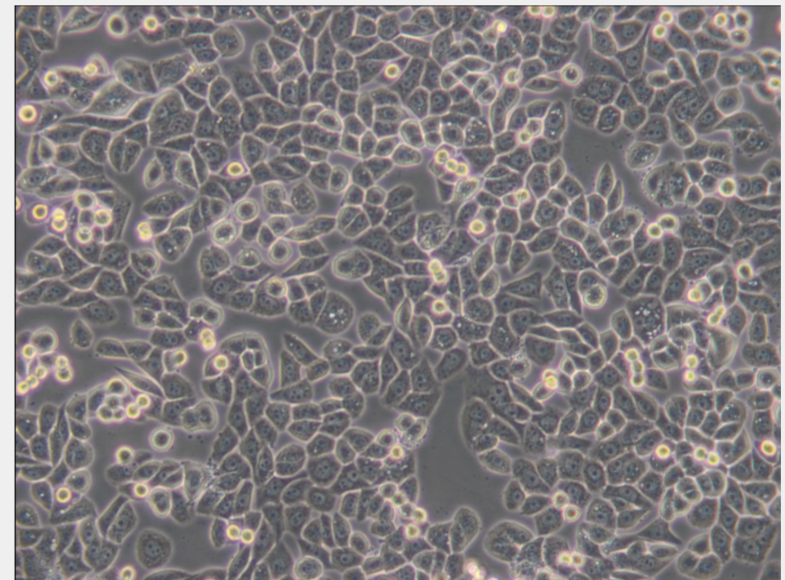
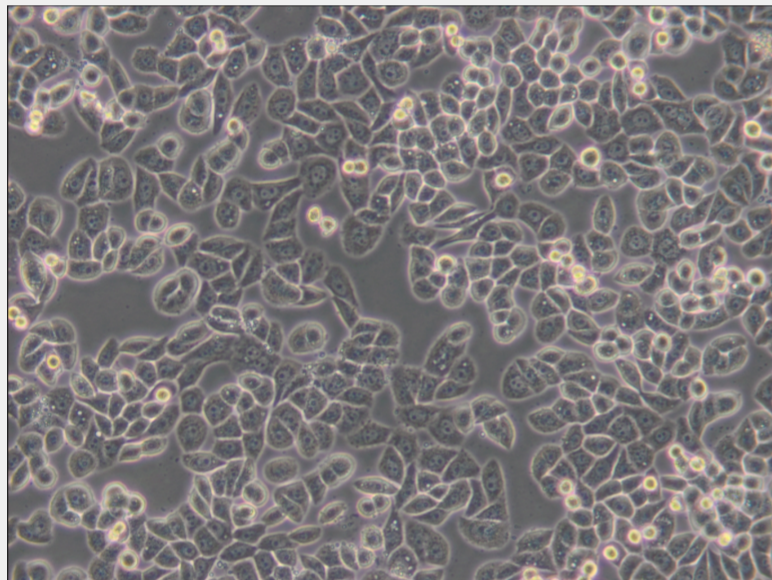
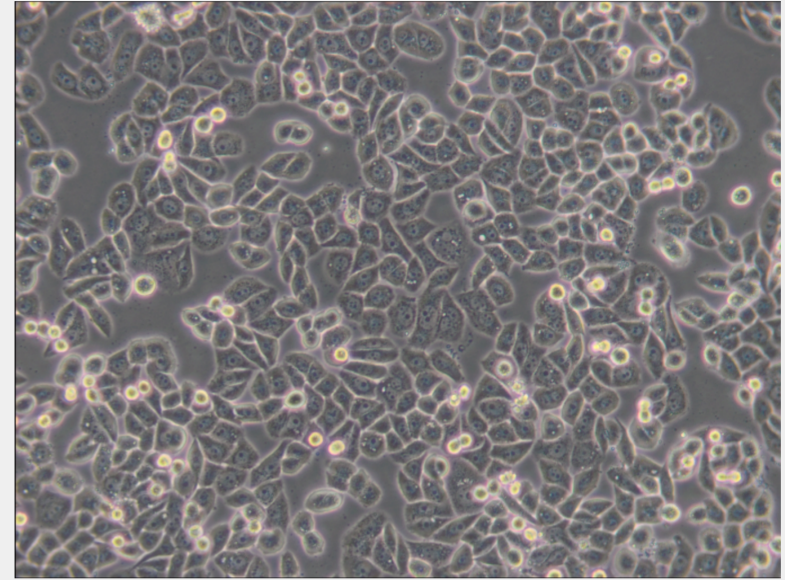
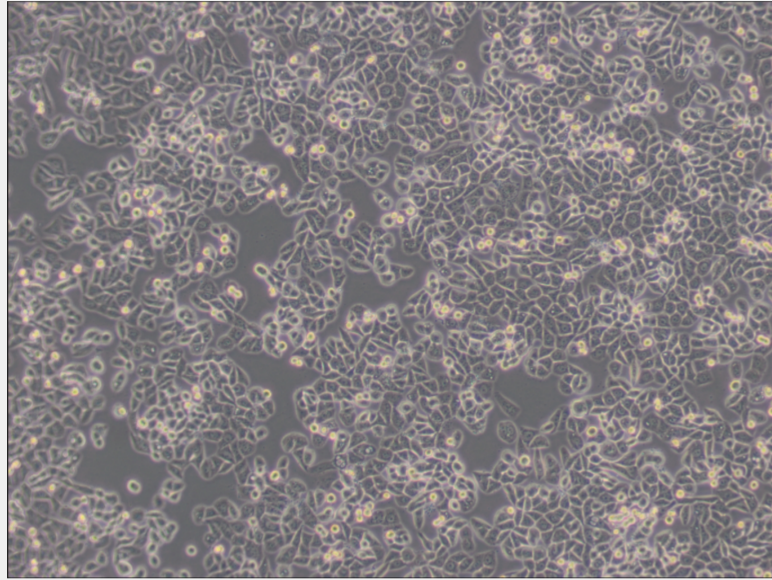
### Subculturing:

Remove and discard culture medium. Briefly rinse the cell layer with DPBS solution to remove all traces of serum that contains trypsin inhibitor. Add 1.0 to 2.0 mL of Trypsin-EDTA solution to flask and observe cells under an inverted microscope until cell layer is dispersed (usually within 2 to 3 minutes). Cells that are difficult to detach may be placed at 37°C to facilitate dispersal. Add 4.0 to 6.0 mL of complete growth medium and aspirate cells by gently pipetting. Add appropriate aliquots of the cell suspension to new culture vessels.

## Product Description

Although the tissue donor was heterozygous for the G6PD alleles, the cell line consistently showed only the G6PD A phenotype. There is a G→A mutation in codon 273 of the p53 gene resulting in an Arg→His substitution. EGF receptor is present at 1×10<sup>6</sup> per cell.





All products are for RESEARCH USE ONLY. Not for diagnostic & therapeutic purposes!