

EA.hy926

Catalog No: tcel272



Available Sizes

Size: 1×10⁶cells/t25culturebottle



Specifications

Application:

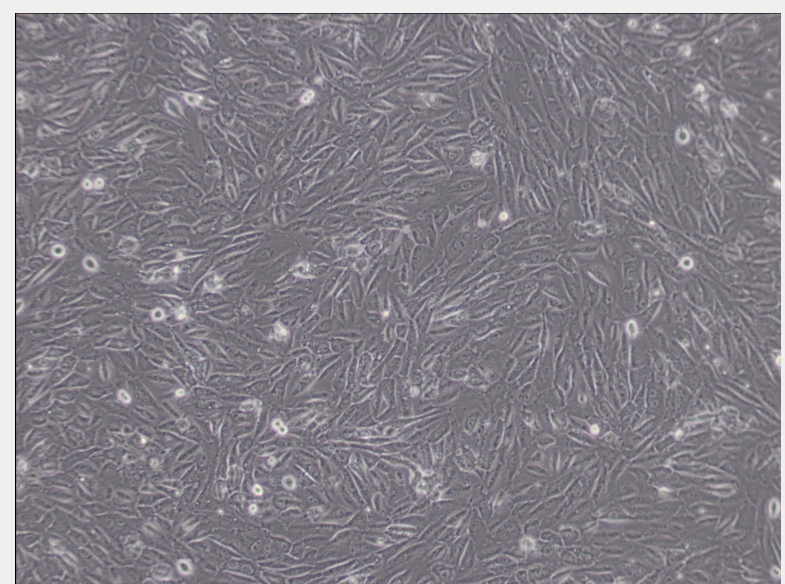
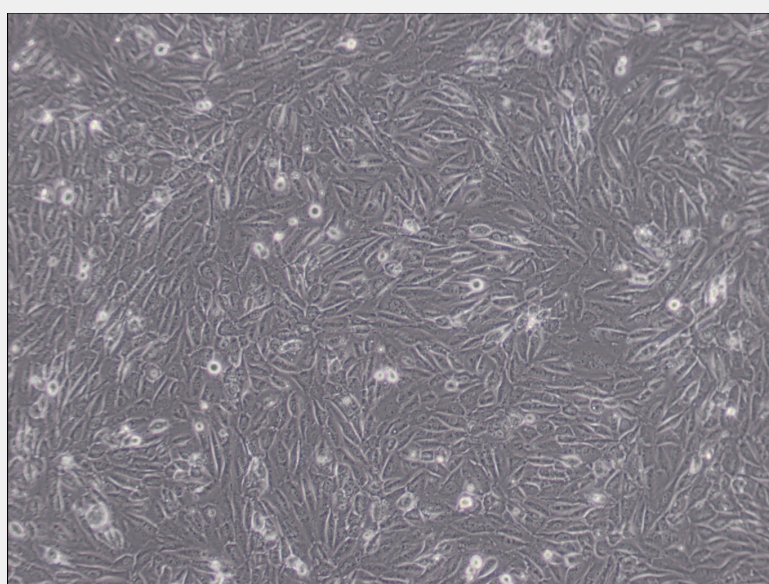
Electron photomicrographs demonstrate cytoplasmic distribution of Weibel-Palade bodies and tissue-specific organelles, characteristics of differentiated endothelial cell functions such as angiogenesis, homeostasis/thrombosis, blood pressure and inflammation.

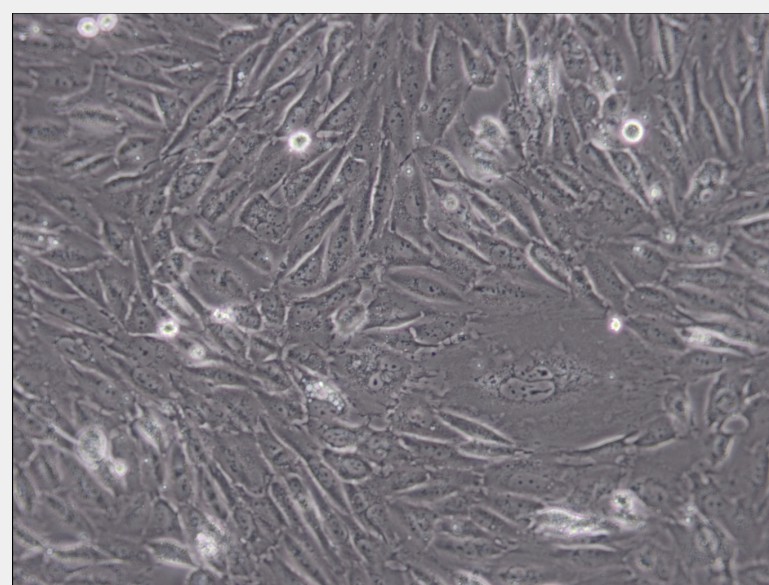
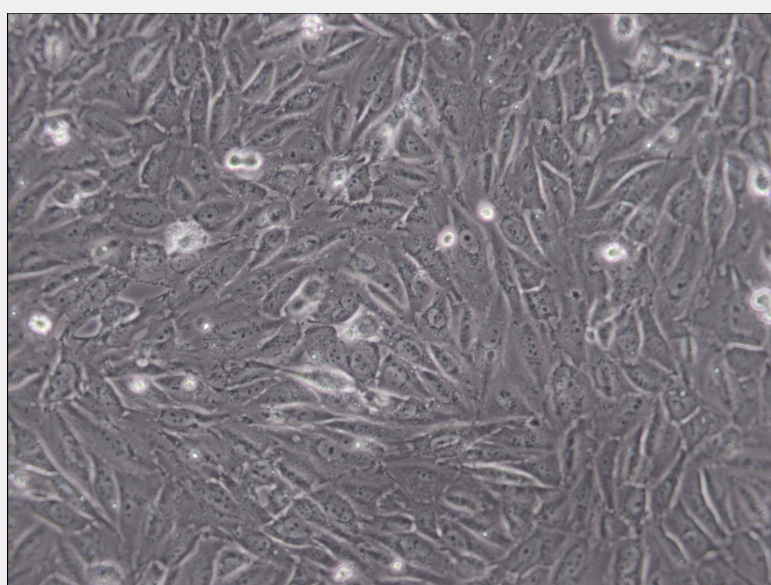
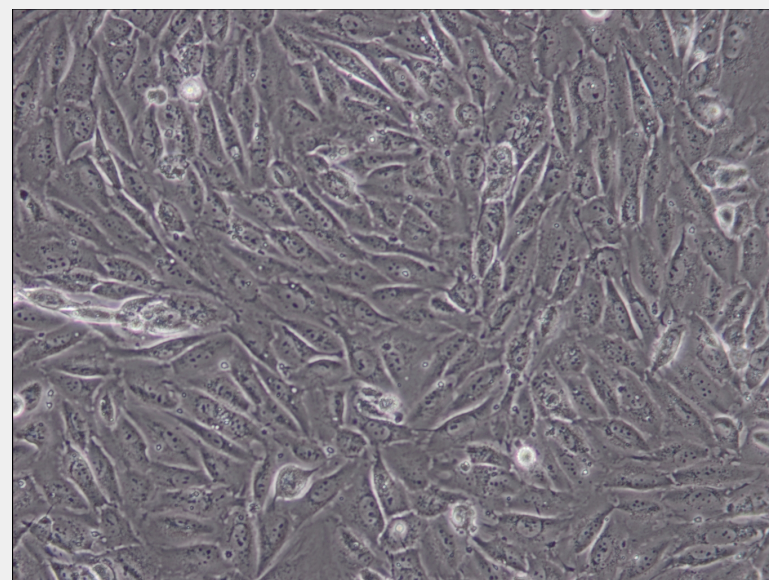
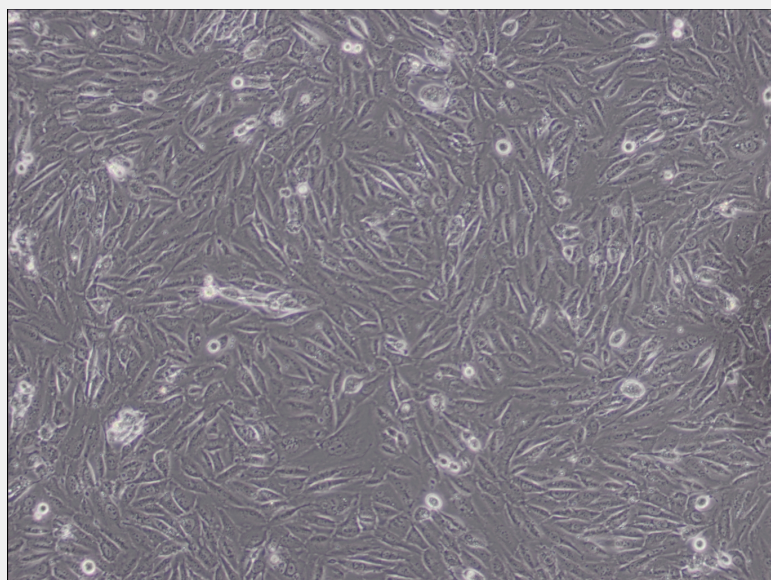
Subculturing:

Remove and discard culture medium. Briefly rinse the cell layer with DPBS solution to remove all traces of serum that contains trypsin inhibitor. Add 1.0 to 2.0 mL of Trypsin-EDTA solution to flask and observe cells under an inverted microscope until cell layer is dispersed (usually within 2 to 3 minutes). Cells that are difficult to detach may be placed at 37°C to facilitate dispersal. Add 4.0 to 6.0 mL of complete growth medium and aspirate cells by gently pipetting. Add appropriate aliquots of the cell suspension to new culture vessels.

Product Description

Electron photomicrographs demonstrate cytoplasmic distribution of Weibel-Palade bodies and tissue-specific organelles, characteristics of differentiated endothelial cell functions such as angiogenesis, homeostasis/thrombosis, blood pressure and inflammation. EA.hy926 cells have been maintained for more than 100 population doublings(PDLs).





All products are for RESEARCH USE ONLY. Not for diagnostic & therapeutic purposes!