

## U-937

**Catalog No: tcel239**



### Available Sizes

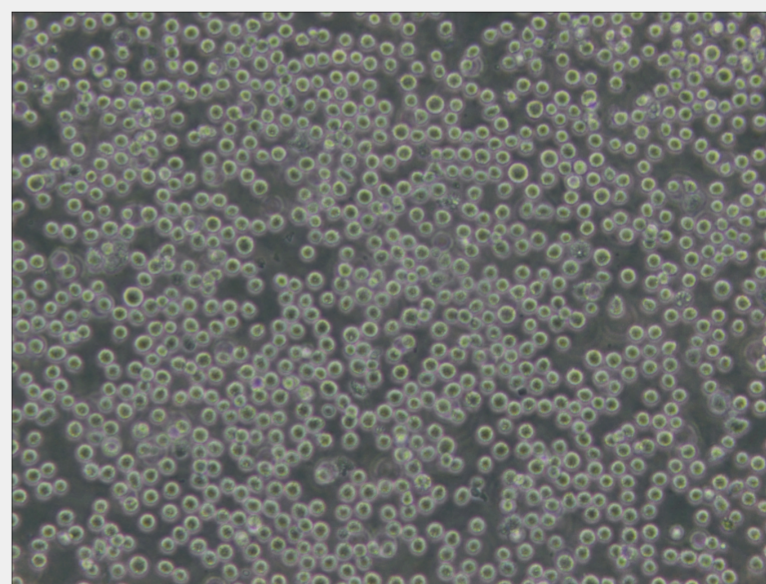
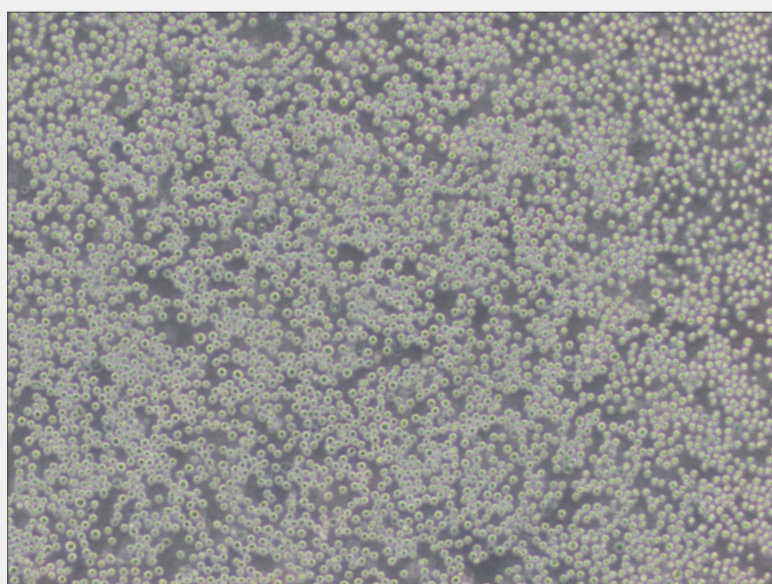
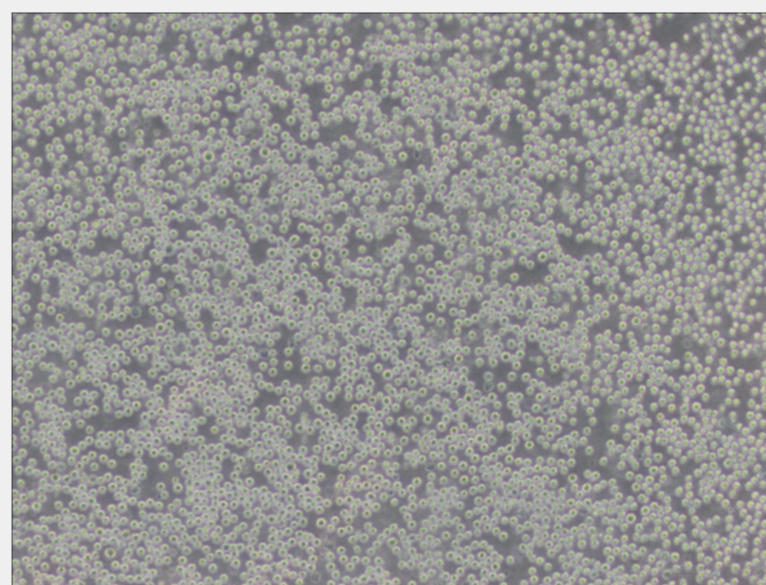
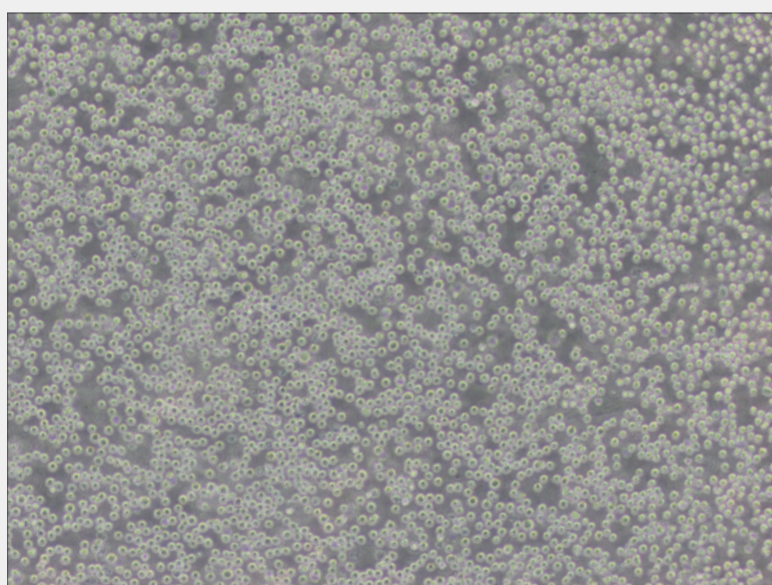
**Size:**  $1 \times 10^6$  cells/t25culturebottle



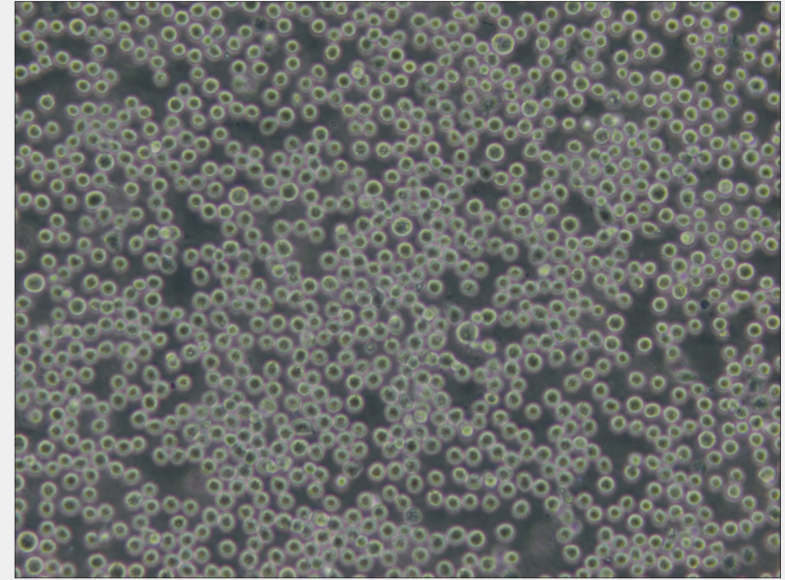
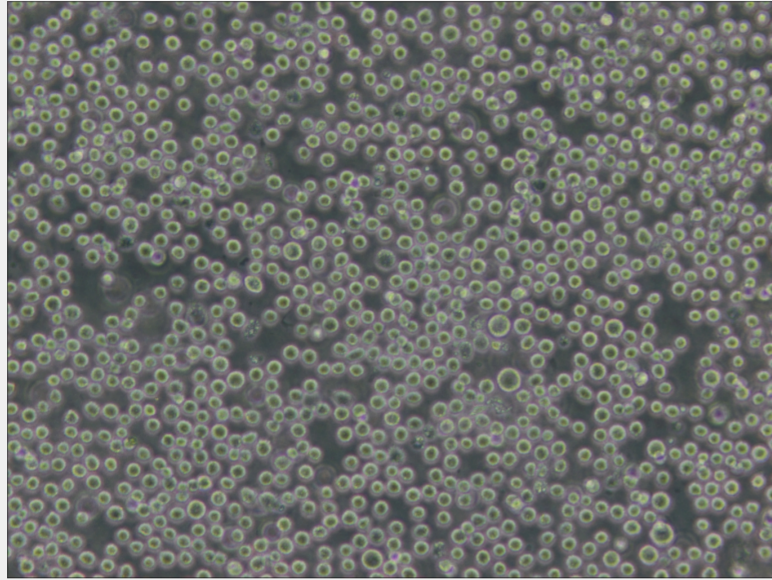
### Specifications

#### **Subculturing:**

Cultures can be maintained by the addition of fresh medium or replacement of medium. Alternatively, cultures can be established by centrifugation with subsequent resuspension at the subcultivation ratio of 1:2-1:4.







All products are for RESEARCH USE ONLY. Not for diagnostic & therapeutic purposes!