

THP-1

Catalog No: tcel233



Available Sizes

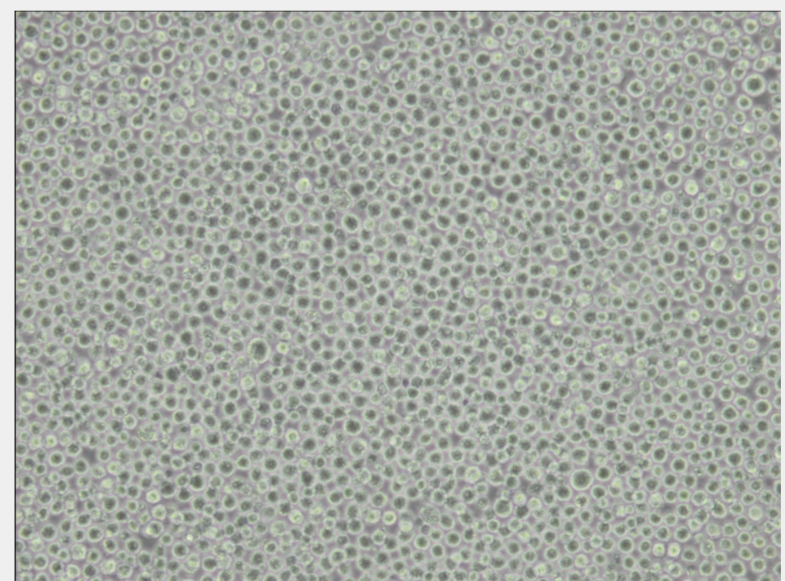
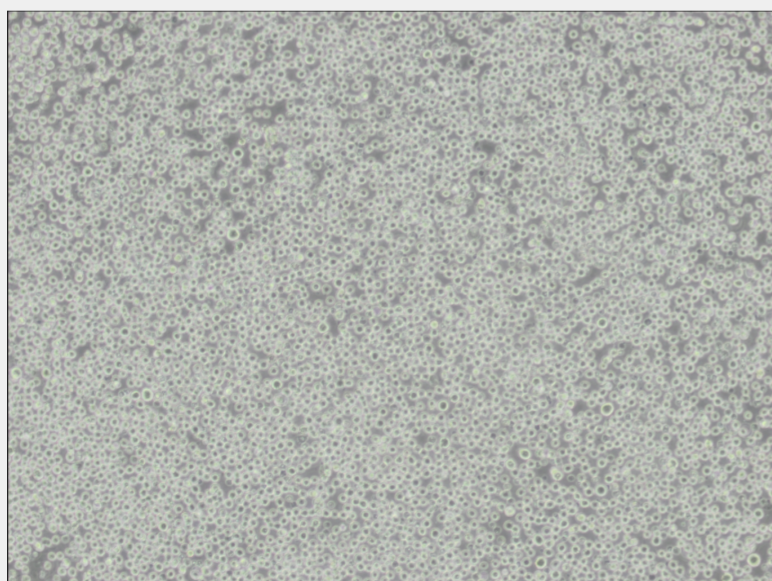
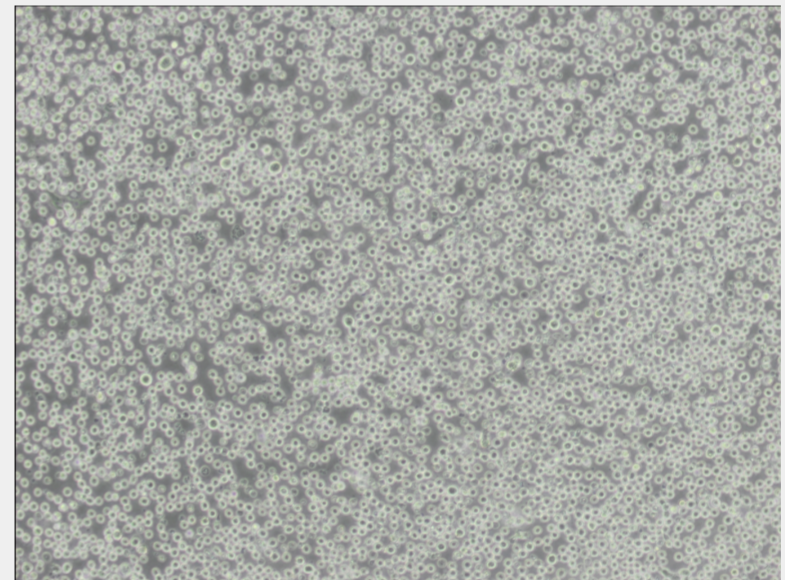
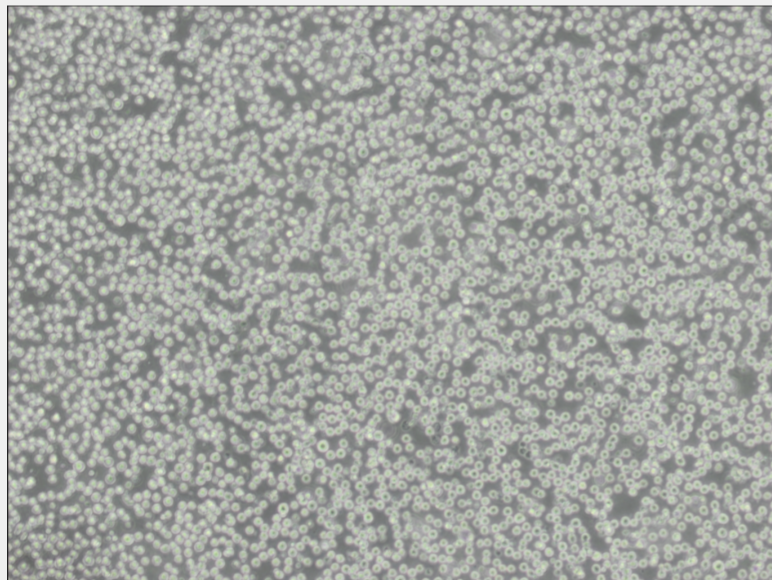
Size: 1×10^6 cells/t25culturebottle

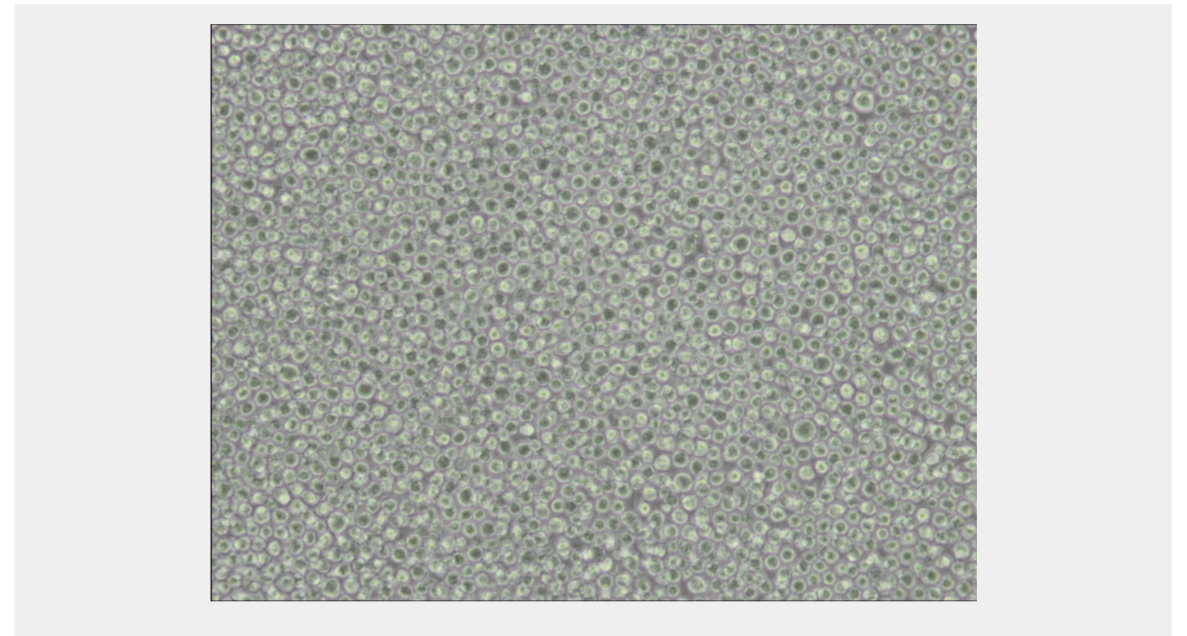
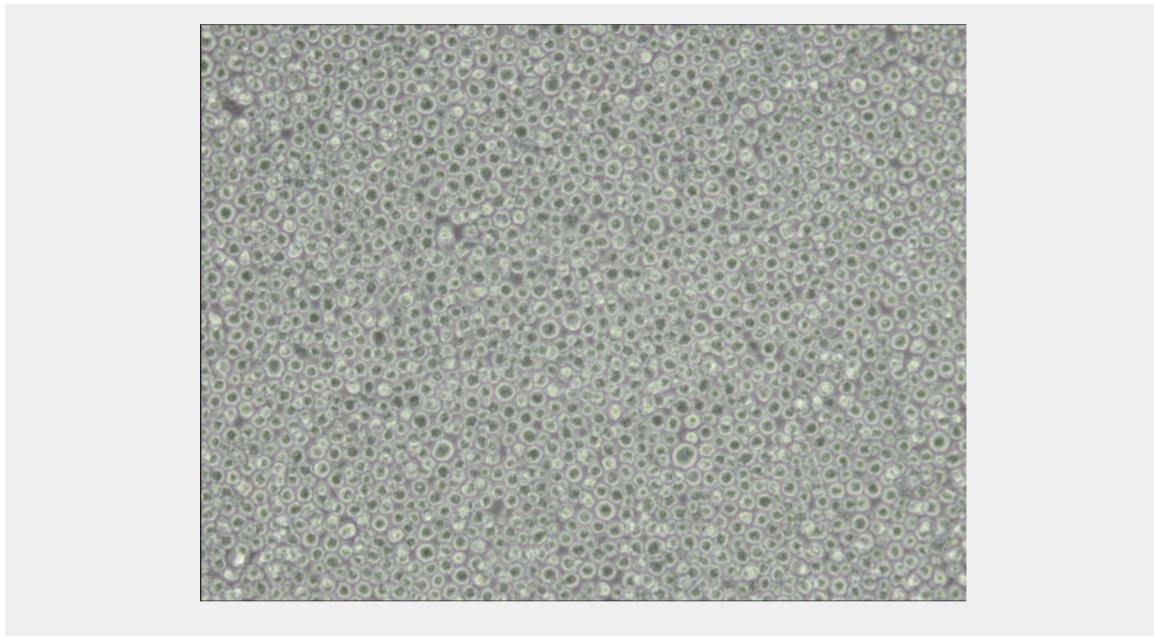


Specifications

Subculturing:

Cultures can be maintained by the addition of fresh medium or replacement of medium. Alternatively, cultures can be established by centrifugation with subsequent resuspension at 1 to 2×10^5 viable cells/ml. Maintain cell density between 1×10^5 and 1×10^6 viable cells/ml.





All products are for RESEARCH USE ONLY. Not for diagnostic & therapeutic purposes!