

SW579 [SW 579; SW-579]

Catalog No: tcel224



Available Sizes

Size: 1×10⁶cells/t25culturebottle



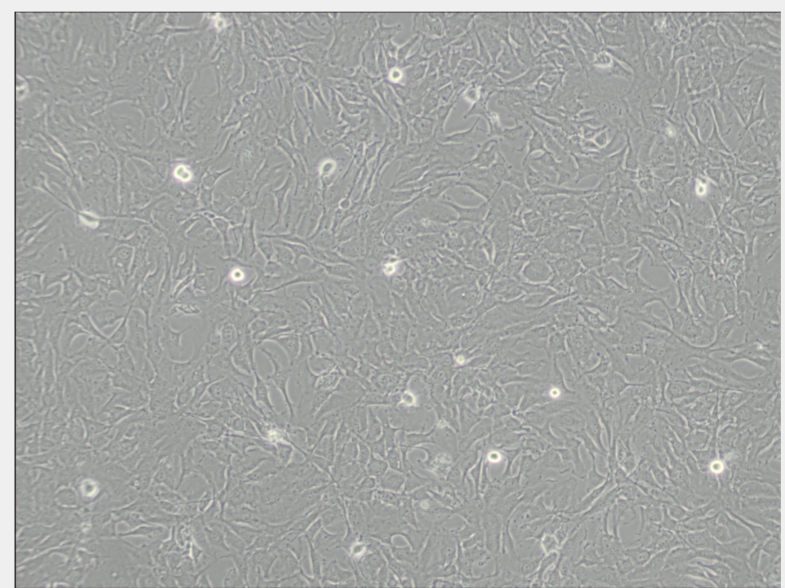
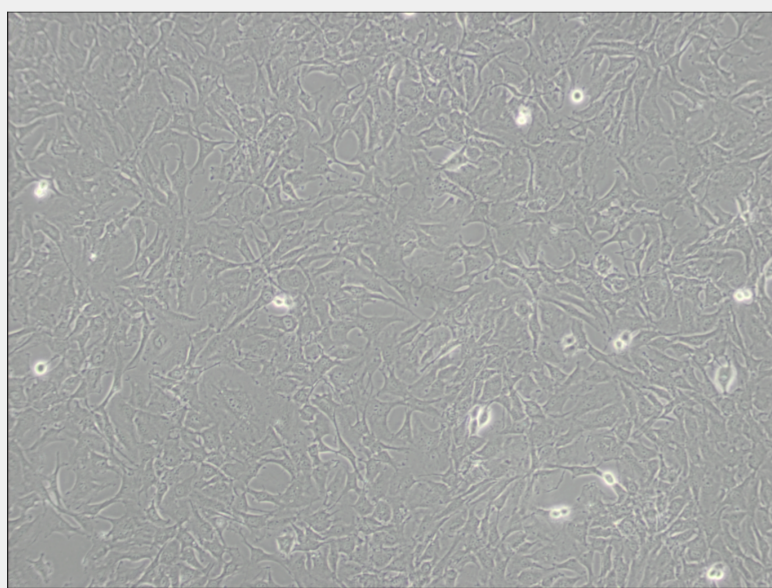
Specifications

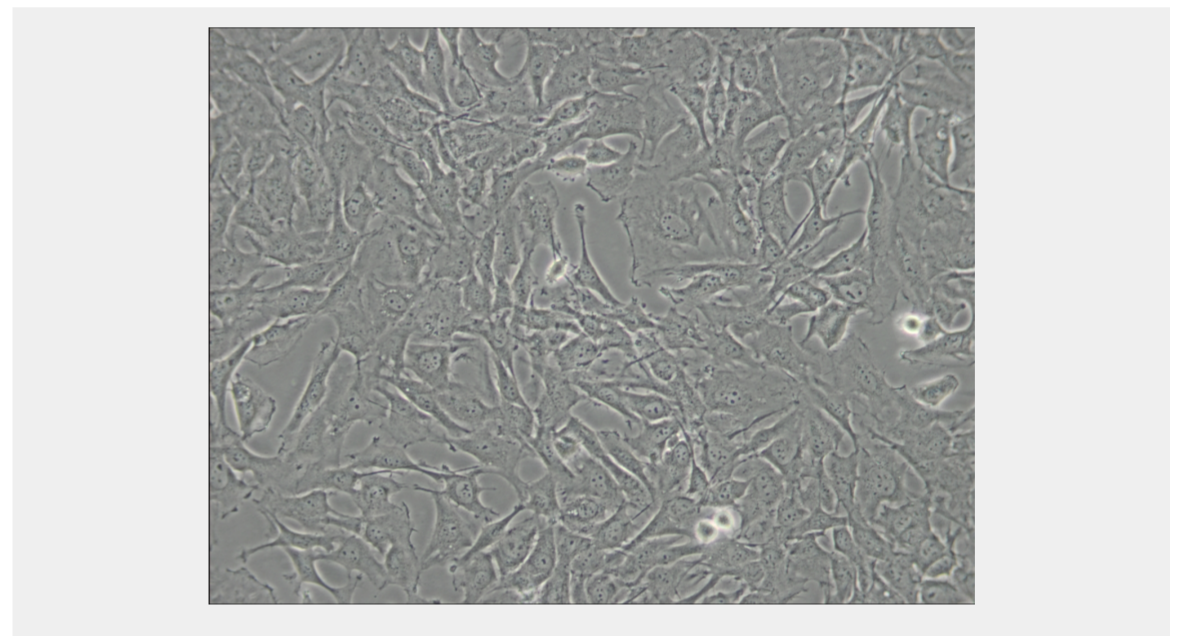
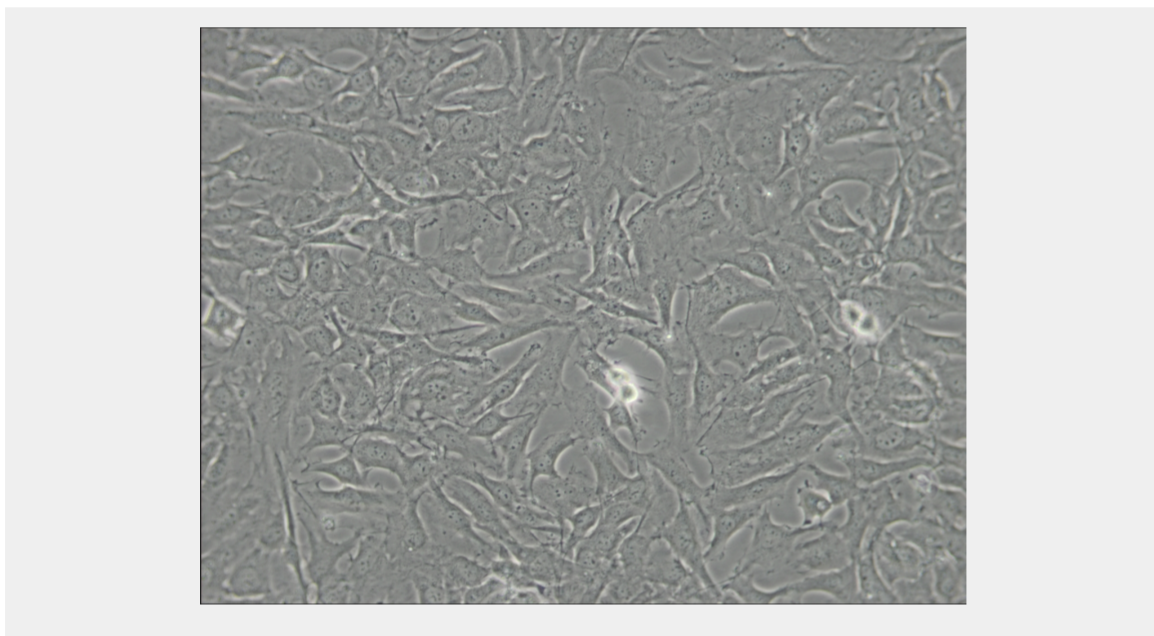
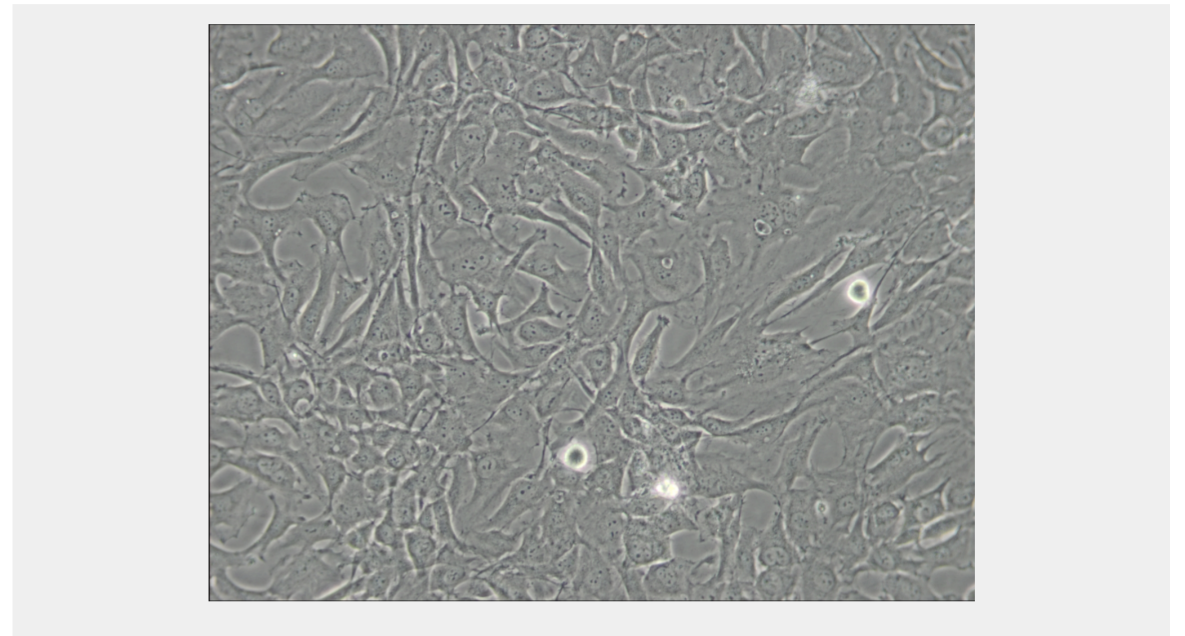
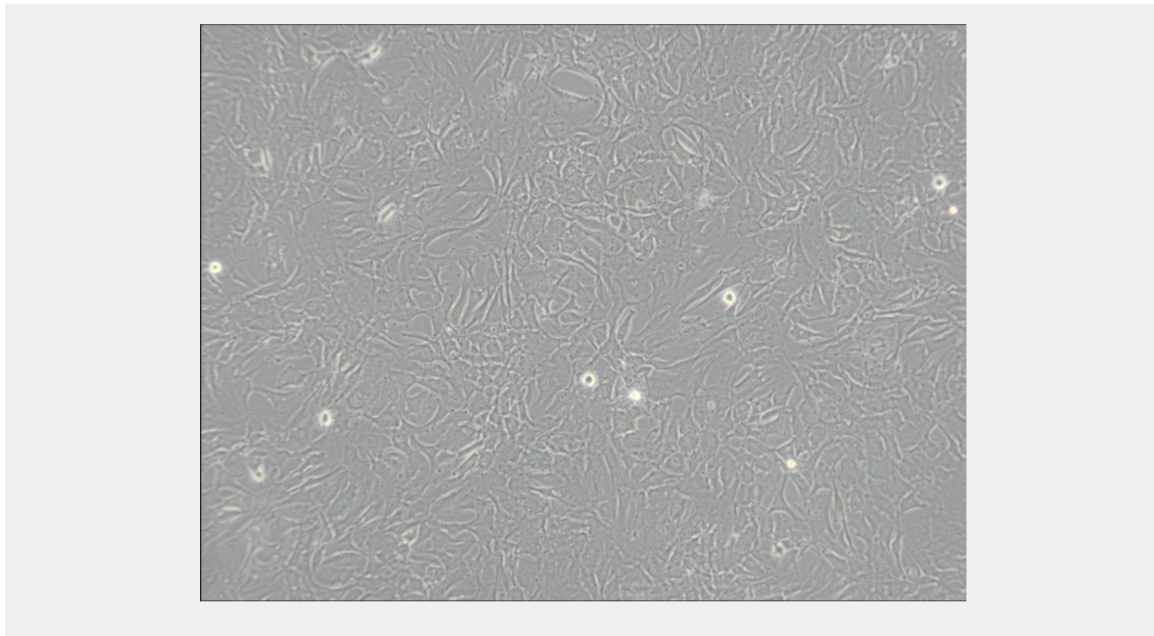
Subculturing:

Remove and discard culture medium. Briefly rinse the cell layer with DPBS solution to remove all traces of serum that contains trypsin inhibitor. Add 1.0 to 2.0 mL of Trypsin-EDTA solution to flask and observe cells under an inverted microscope until cell layer is dispersed (usually within 2 to 3 minutes). Cells that are difficult to detach may be placed at 37°C to facilitate dispersal. Add 4.0 to 6.0 mL of complete growth medium and aspirate cells by gently pipetting. Add appropriate aliquots of the cell suspension to new culture vessels.

Product Description

A recurrence of the malignancy resulted in a wide-spread metastasis from the colon to an abdominal mass. The established cell line consists mainly of individual small spherical and bipolar cells lacking microvilli. The cells synthesize only small quantities of carcinoembryonic antigen(CEA), and are highly tumorigenic in nude mice. The cells are negative for expression of CSAp(CSAp-) and colon antigen 3, negative. The cells are positive for keratin by immunoperoxidase staining. The line was derived from a metastasis of the same tumor from which the SW480 was derived. There is a G→A mutation in codon 273 of the p53 gene resulting in an Arg→His substitution. The line is positive for expression of c-myc, K-ras, H-ras, N-ras, Myb, sis and fos oncogenes. N-myc oncogene expression was not detected.





All products are for RESEARCH USE ONLY. Not for diagnostic & therapeutic purposes!